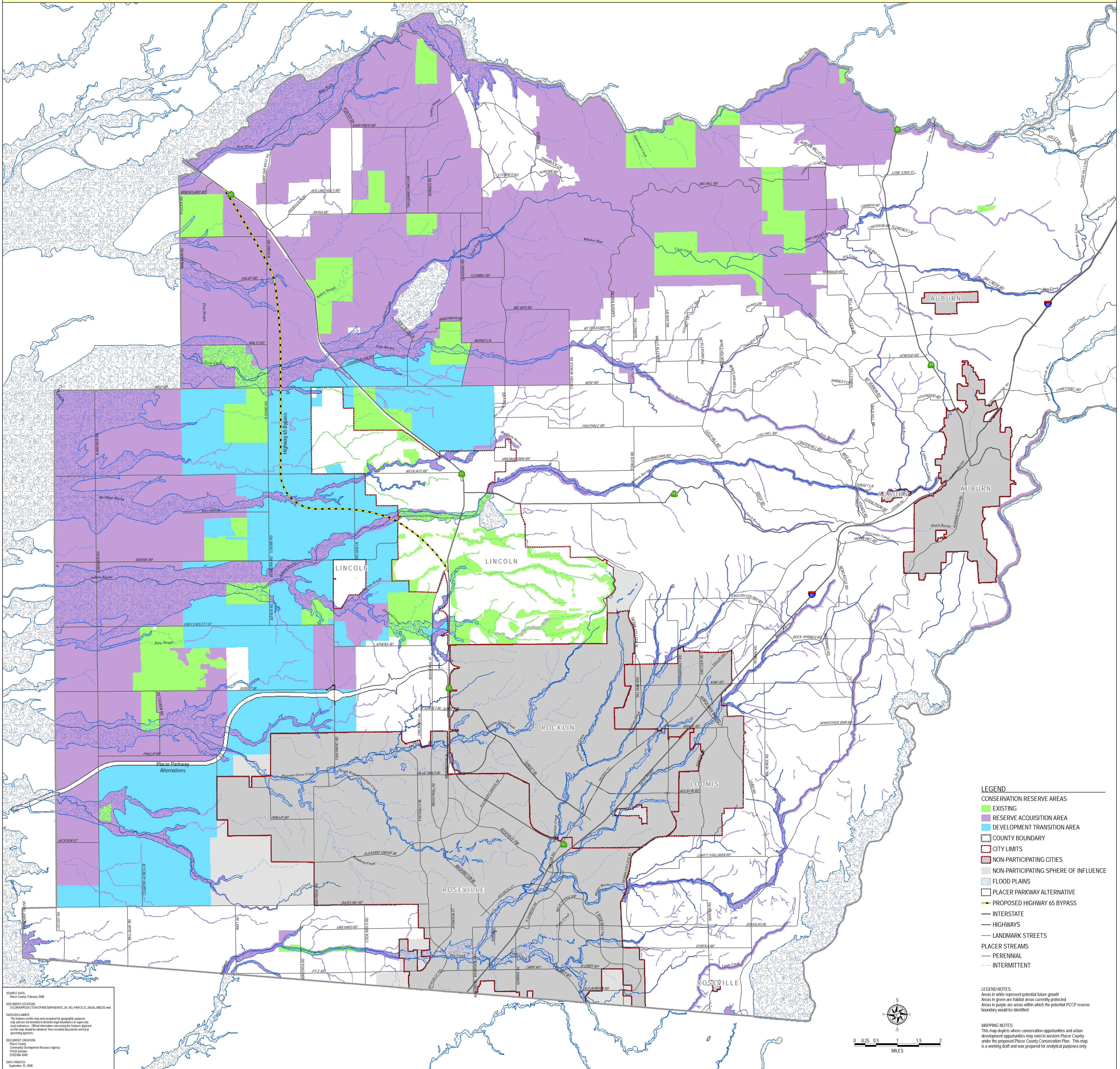


AD HOC COMMITTEE RECOMMENDED RESERVE MAP - AUGUST 2008



- LEGEND**
- CONSERVATION RESERVE AREAS
 - EXISTING
 - RESERVE ACQUISITION AREA
 - DEVELOPMENT TRANSITION AREA
 - COUNTY BOUNDARY
 - CITY LIMITS
 - NON-PARTICIPATING CITIES
 - NON-PARTICIPATING SPHERE OF INFLUENCE
 - FLOOD PLAINS
 - PLACER PARKWAY ALTERNATIVE
 - PROPOSED HIGHWAY 65 BYPASS
 - INTERSTATE
 - HIGHWAYS
 - LANDMARK STREETS
 - PLACER STREAMS
 - PERENNIAL
 - INTERMITTENT

LEGEND NOTES:
 Areas in white represent potential future growth
 Areas in green are habitat areas currently protected
 Areas in purple are areas within which the potential PCPP reserve boundary would be identified

MAPPING NOTES:
 This map depicts where conservation opportunities and urban development opportunities may exist in western Placer County under the proposed Placer County Conservation Plan. This map is a working draft and was prepared for analytical purposes only.

SOURCE DATA:
 Placer County, February 2008

DOCUMENT CONTROL:
 S:\CONTRACTS\CH\PARC\PARC\AD_HOC_PARCELS_8x11_08025.mxd

DATA DISCLAIMER:
 The data on this map were prepared for geographic purposes only and are not intended to illustrate legal boundaries or superior land interests. Official information concerning the features depicted on this map should be obtained from recorded documents and local governing agencies.

DOCUMENT CREATION:
 Placer County
 Community Development Resources Agency
 11/25/08
 031086-000

DATE PRINTED:
 September 10, 2008

