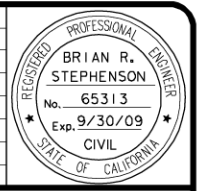


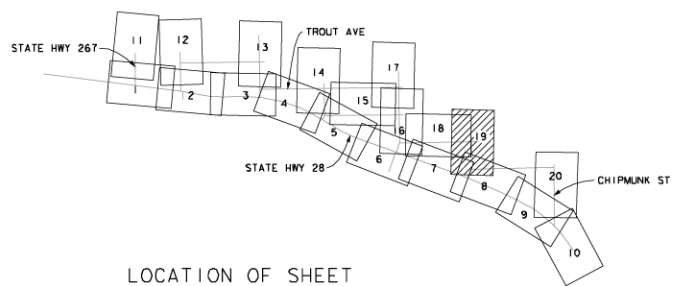
* OFF STREET PARKING STALLS TO BE POROUS CONCRETE

REVISION	DATE	DESCRIPTION AND SHEET NO.	APPROVED BY	DATE



THE COUNTY OF PLACER OR ITS OFFICERS OR AGENTS SHALL NOT BE RESPONSIBLE FOR THE ACCURACY OR COMPLETENESS OF ELECTRONIC COPIES OF THIS PLAN SHEET.

L-19



500.90.9.990

Source: Dokken Engineering

FOR REDUCED PLANS
ORIGINAL SCALE IS IN INCHES



ALL DIMENSIONS SHOWN IN FEET
UNLESS OTHERWISE NOTED

Kings Beach Commercial Core Improvement Project Preferred Alternative: Hybrid Alternative

Figure 2-4

PLAN SCALE: 1" = 20'
PROFILE SCALE:
HORIZ: 1" = 40'
VERT: 1" = 10'

DATE: 02/15/08
DESIGNED: 02/15/08
DRAWN: 02/15/08
CONTRACT NO.:
CHECKED: 02/15/08
RECORD: 02/15/08
DRAWING:



COUNTY OF PLACER DEPARTMENT OF PUBLIC WORKS
KINGS BEACH COMMERCIAL CORE IMPROVEMENT PROJECT

SHEET NO.
21
OF
28