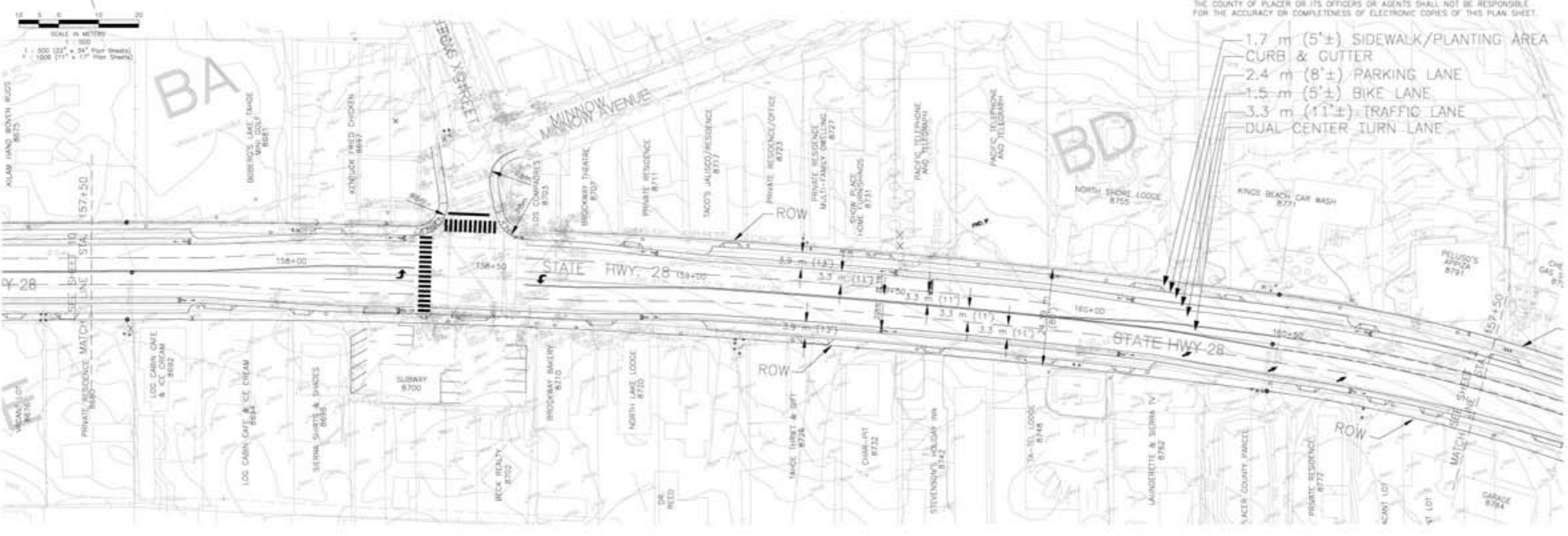


ALTERNATIVE 3 - ROADWAY CROSS SECTION:

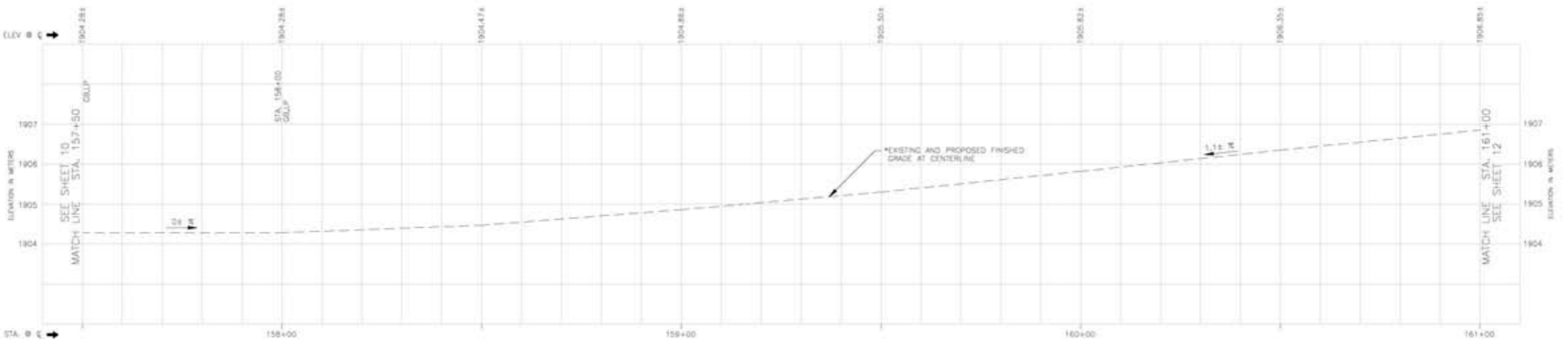
- 2 - 3.3 m (11') TRAFFIC LANES EACH DIRECTION
 - 1 - 1.5 m (5') BIKE LANE EACH DIRECTION
 - 1 - 2.4 m (8') PARKING LANE EACH DIRECTION
 - 1 - 1.7 m (5') SIDEWALKS EACH DIRECTION
- (SEE SHEET 12 FOR TYPICAL X-SECTION - ALTERNATIVE 3)



REVISION #	DATE	DESCRIPTION AND DRAWN BY	APPROVED BY	DATE



- 1.7 m (5'±) SIDEWALK/PLANTING AREA
- CURB & GUTTER
- 2.4 m (8'±) PARKING LANE
- 1.5 m (5'±) BIKE LANE
- 3.3 m (11'±) TRAFFIC LANE
- DUAL CENTER TURN LANE



THE COUNTY OF PLACER OR ITS OFFICERS OR AGENTS SHALL NOT BE RESPONSIBLE FOR THE ACCURACY OR COMPLETENESS OF ELECTRONIC COPIES OF THIS PLAN SHEET.

PLAN SCALE: 1:500
 PROFILE SCALE: HORIZ: 1:500
 VERT: 1:50

CONTRACT NO. 73108
 DESIGNED: BBS
 DRAWN: BBS
 CHECKED: BTL
 DATE: 12/02/08

DEPARTMENT OF PUBLIC WORKS
KINGS BEACH COMMERCIAL CORE IMPROVEMENT PROJECT
 FEASIBILITY STUDY - ALTERNATIVE 3 - PLAN, PROFILE & STRIPING LAYOUT

SHEET NO. 10 OF 18

Figure 2-1
Kings Beach Commercial Core Improvement Project Alternatives

Source: Dokken Engineering