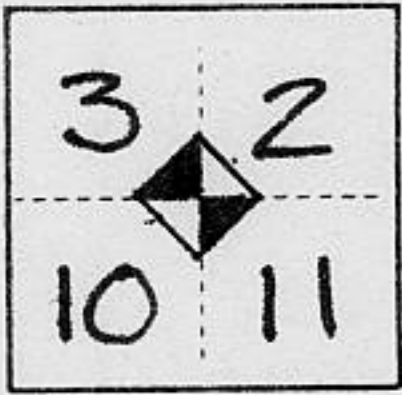


(For County Use Only)

CORNER RECORD

COUNTY OF PLACER T. 11 N R. 7 E M.D.B. & M. MERIDIAN CALIFORNIA

CORNER TYPE: GOV'T. CORNER MEANDER RANCHO CONTROL OTHER
CORNER IDENTIFICATION — DATE OF VISIT MAY 14 1981



SECTION CORNER

CORNER — LEFT AS FOUND FOUND AND TAGGED REESTABLISHED OBLITERATED CORNER REBUILT

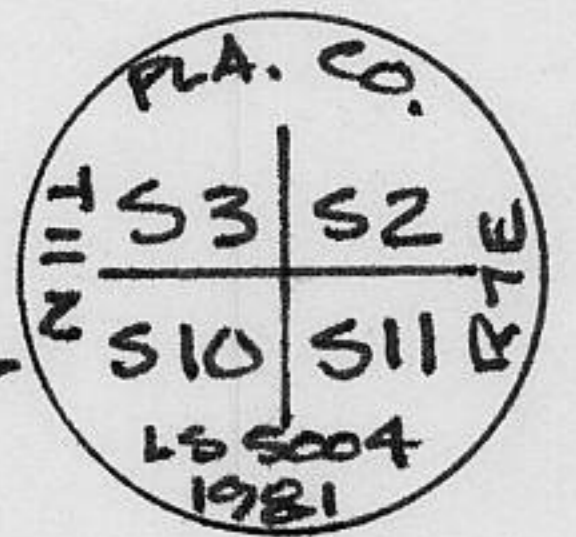
PHYSICAL DESCRIPTION OF CORNER FOUND; EVIDENCE AND METHOD USED TO IDENTIFY OR REESTABLISH

CORNER WAS DESTROYED BY ROADWORK IN 1980 - POSITION WAS RE-ESTABLISHED FROM RECORD INFORMATION PER BOOK 6 OF SURVEYS, PAGE 85.

PHYSICAL DESCRIPTION OF MONUMENTS REBUILT OR PERPETUATED

SET 1/2" COPPERWELD IN CONCRETE WITH MONUMENT BOX

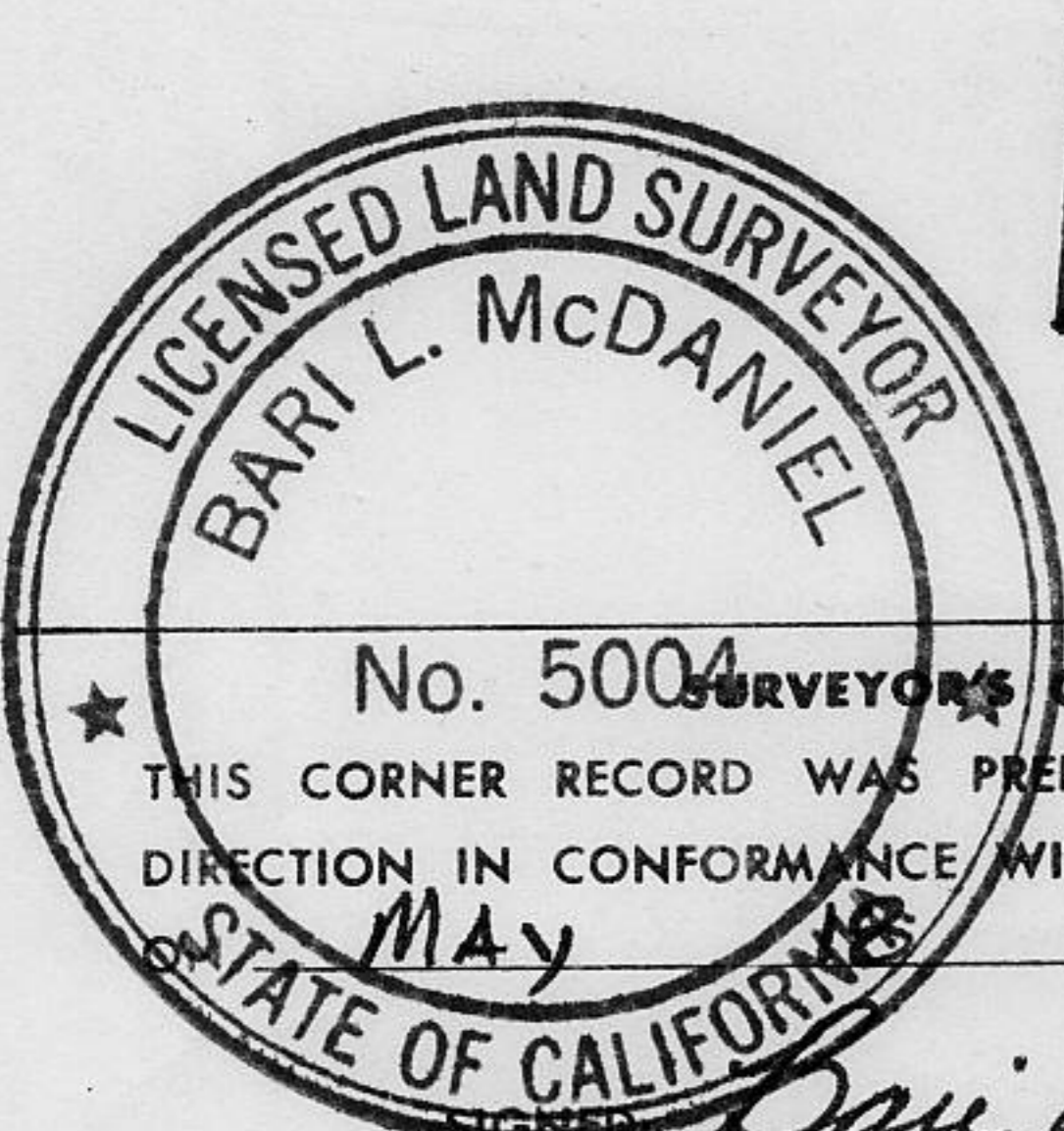
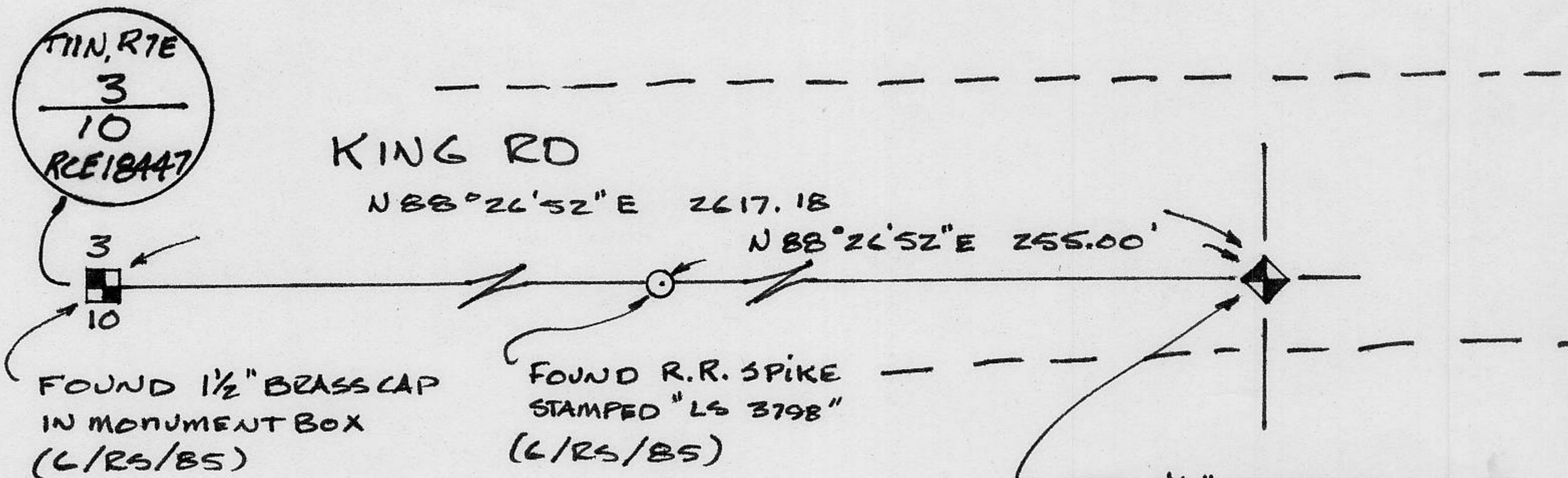
STAMPED 2



CALIFORNIA COORDINATE SYSTEM ORDER: FIRST SECOND THIRD
STATIONS USED: NGS (USC & GS) STATE COUNTY OTHER STATION _____ STATION _____
ZONE _____ ELEVATION _____ NORTHINGS (Y) _____ EASTINGS (X) _____

(Fold)

SKETCH: (Include reference tie or witness points, remarks and topo of area)



NOT TO SCALE

SURVEYOR'S CERTIFICATE
THIS CORNER RECORD WAS PREPARED BY ME OR UNDER MY DIRECTION IN CONFORMANCE WITH THE LAND SURVEYORS ACT OF THE STATE OF CALIFORNIA
MAY 1981
Bari L. McDaniel
L.S. 5004

COUNTY SURVEYOR'S CERTIFICATE
THE CORNER RECORD WAS RECEIVED June 5, 1981 AND EXAMINED AND FILED June 12, 1981
BY: Med. Snyder, LS 3798
TITLE: Deputy County Surveyor
DOCUMENT No. Book 1, page 69

STATEMENT ON BACK OF SHEET YES NO

Book 1, Corner Records, Page 69