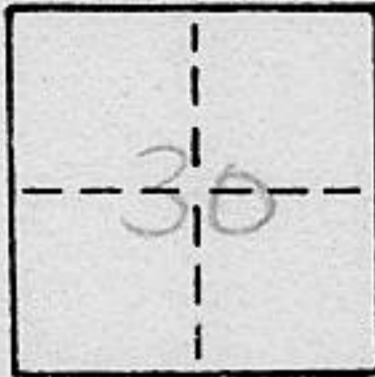


CORNER RECORD

COUNTY OF Placer T. 13N R. 8E Sec. 30 MDB 8 MERIDIAN CALIFORNIA

CORNER TYPE: GOVT. CORNER MEANDER RANCHO CONTROL OTHER

CORNER IDENTIFICATION — DATE OF VISIT April 19 81



Southeast corner of Lot 7 Black Forest Estates No.1
Filed in Book K at Page 18.

CORNER — LEFT AS FOUND FOUND AND TAGGED REESTABLISHED OBLITERATED CORNER REBUILT

PHYSICAL DESCRIPTION OF CORNER FOUND; EVIDENCE AND METHOD USED TO IDENTIFY OR REESTABLISH

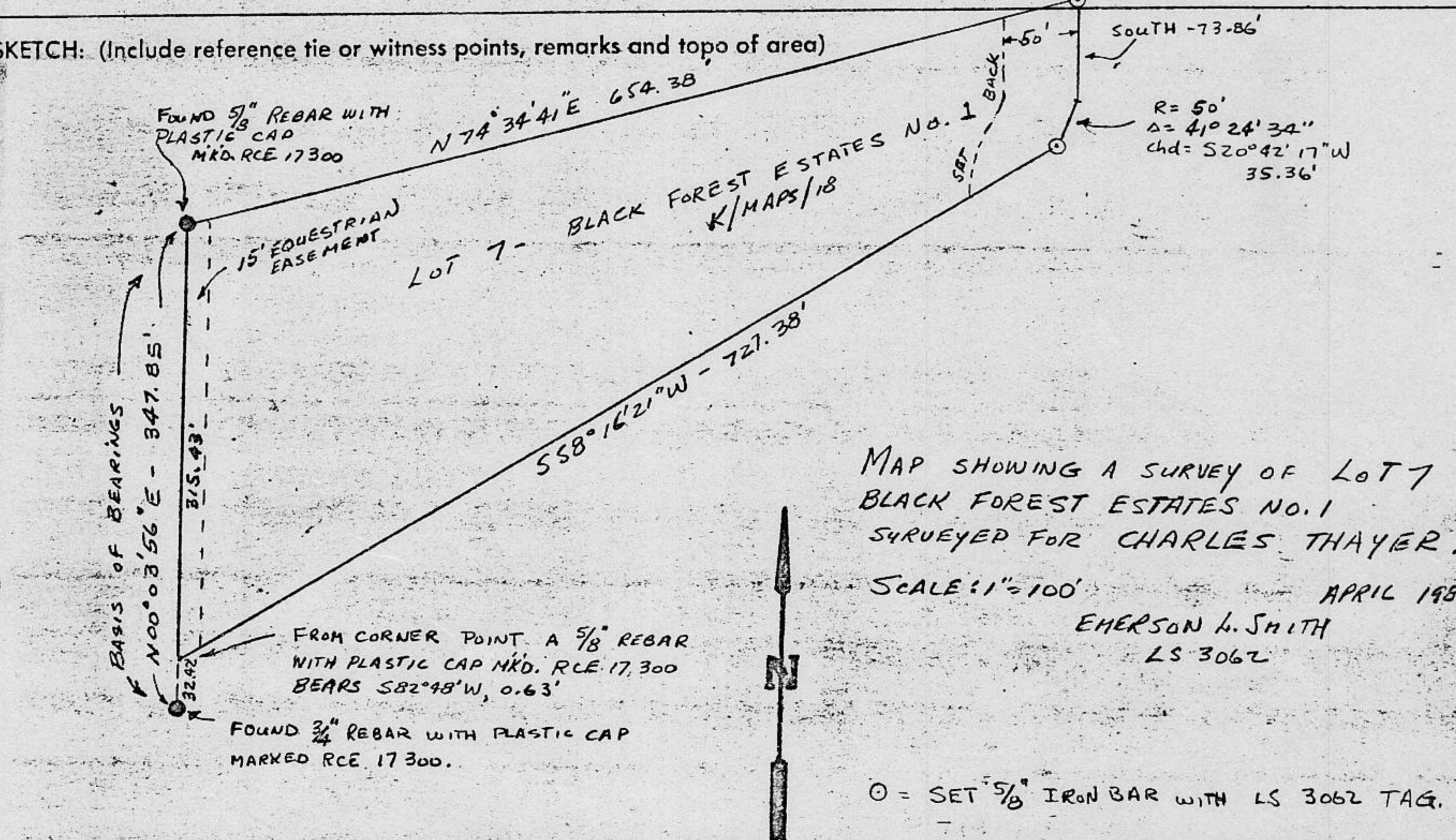
See sketch attached

PHYSICAL DESCRIPTION OF MONUMENTS REBUILT OR PERPETUATED

See sketch attached

CALIFORNIA COORDINATE SYSTEM ORDER: FIRST SECOND THIRD
STATIONS USED: NGS (USC & GS) STATE COUNTY OTHER STATION _____ STATION _____
ZONE _____ ELEVATION _____ NORTHINGS (Y) _____ EASTINGS (X) _____

SKETCH: (Include reference tie or witness points, remarks and topo of area)



MAP SHOWING A SURVEY OF LOT 7
BLACK FOREST ESTATES NO. 1
SURVEYED FOR CHARLES THAYER.

SCALE: 1" = 100' APRIL 1981
EMERSON L. SMITH
LS 3062

○ = SET 5/8" IRON BAR WITH LS 3062 TAG.

SURVEYOR'S CERTIFICATE
THIS CORNER RECORD WAS PREPARED BY ME OR UNDER MY DIRECTION IN CONFORMANCE WITH THE LAND SURVEYORS ACT ON April 19 81.
SIGNED: Emerson L. Smith
L.S. or R.C.E. No.: LS 3062

COUNTY SURVEYOR'S CERTIFICATE
THE CORNER RECORD WAS RECEIVED June 25, 1981 AND EXAMINED AND FILED September 19, 81.
BY: Wendy Snyder, LS 3798
TITLE: Deputy County Surveyor
DOCUMENT No. Book 1, page 71

Book 1, Corner Records, Page 71