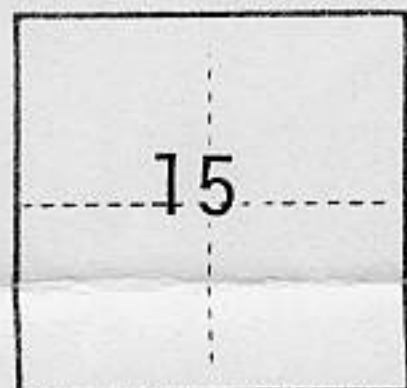


(For County Use Only)

CORNER RECORD

COUNTY OF Placer T. 16N R. 17E M.D. Meridian CALIFORNIA

CORNER TYPE: GOV'T. CORNER MEANDER RANCHO CONTROL OTHER
CORNER IDENTIFICATION — DATE OF VISIT 9/17 19 84



CORNER — LEFT AS FOUND FOUND AND TAGGED REESTABLISHED OBLITERATED CORNER REBUILT

PHYSICAL DESCRIPTION OF CORNER FOUND; EVIDENCE AND METHOD USED TO IDENTIFY OR REESTABLISH

Found and capped with L.S. 4444 1/2" R.B. @ the S.E. and S.W. corners of the North 110' of Lot 11, Agate Bay Shore Subdivision Book E Maps, Page 16.

PHYSICAL DESCRIPTION OF MONUMENTS REBUILT OR PERPETUATED

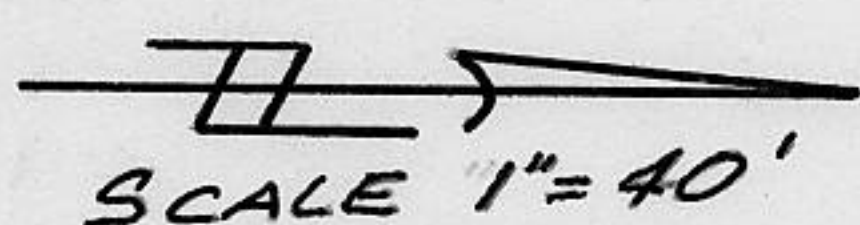
Reset with 3/4" rebar capped L.S. 4444 @ the N.W. corner and a witness corner on the North line of the North 110' of Lot 11, Agate Bay Shore Subdivision, Book E Maps, Page 16, S89°58'W 17.00' of the true corner.

CALIFORNIA COORDINATE SYSTEM ORDER: FIRST SECOND THIRD
STATIONS USED: NGS (USC & GS) STATE COUNTY OTHER STATION _____ STATION _____
ZONE _____ ELEVATION _____ NORTHINGS (Y) _____ EASTINGS (X) _____

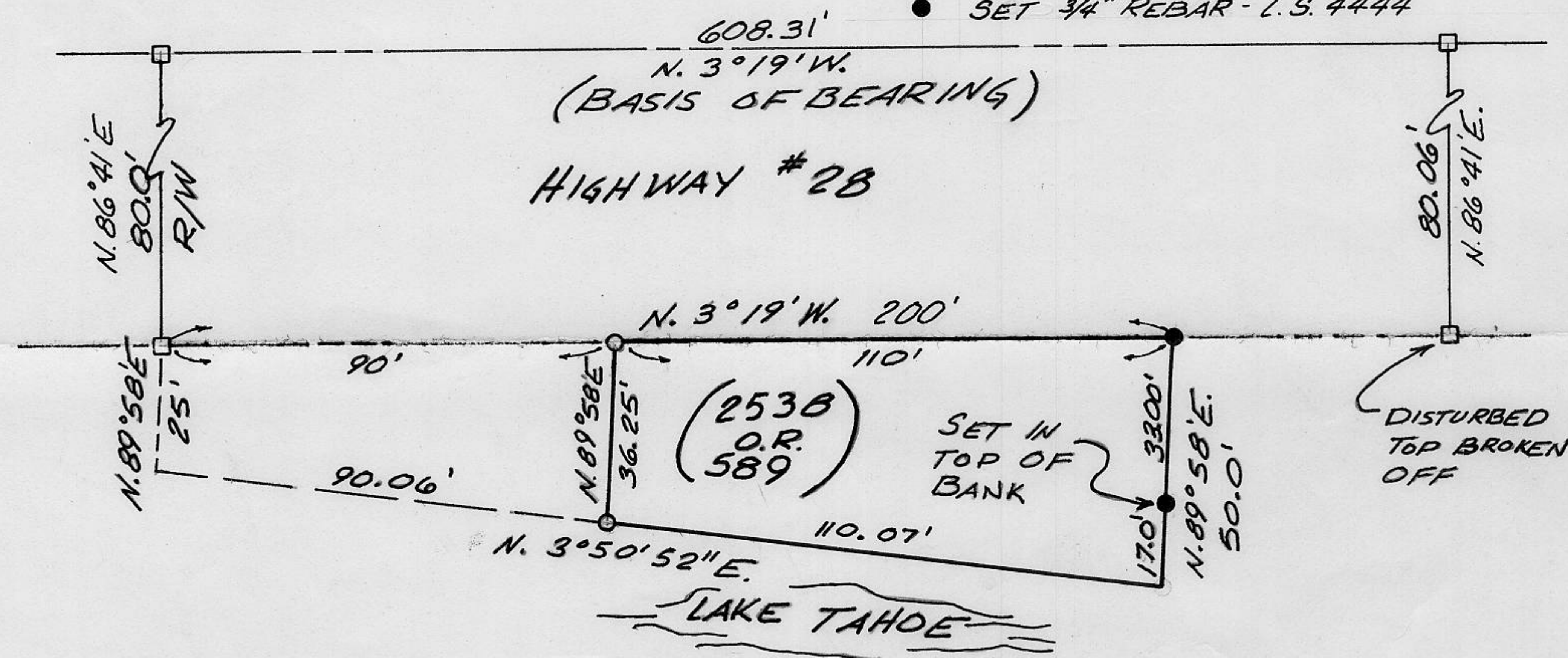
(Fold)

SKETCH: (Include reference tie or witness points, remarks and topo of area)

LEGEND



- FOUND 6"x6" CONC. HWY. MON.
- FOUND 1/2" REBAR - SET CAP L.S. 4444
- SET 3/4" REBAR - L.S. 4444

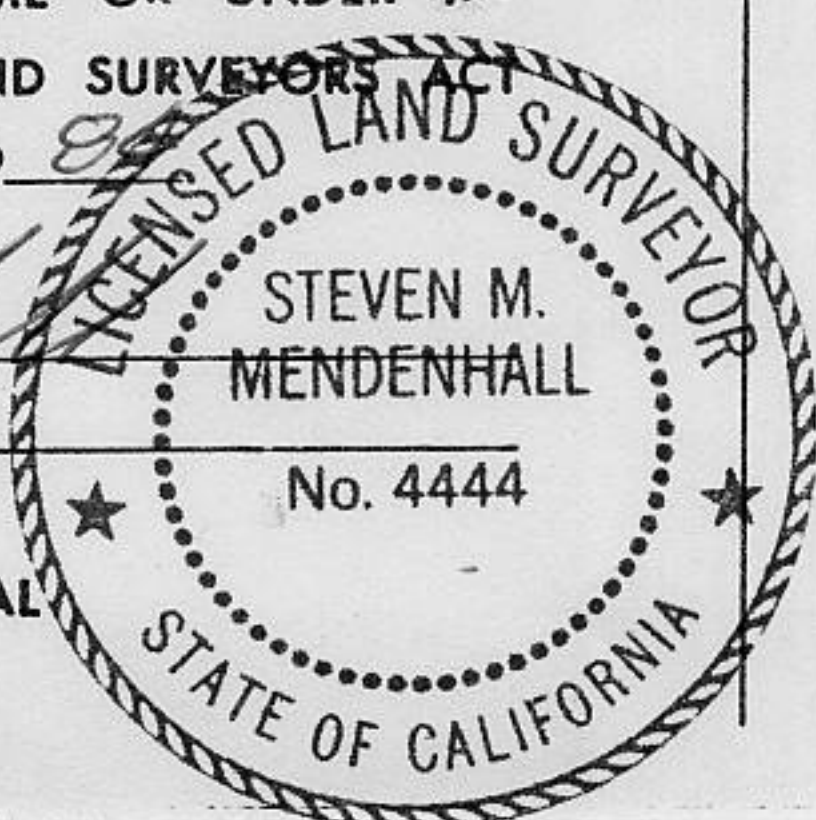


Book 1, Corner Records, Page 104

SURVEYOR'S CERTIFICATE

THIS CORNER RECORD WAS PREPARED BY ME OR UNDER MY DIRECTION IN CONFORMANCE WITH THE LAND SURVEYORS ACT ON Sept 25 19 84

SIGNED: [Signature]
L.S. or R.C.E. No.: L.S. 4444



COUNTY SURVEYOR'S CERTIFICATE

THE CORNER RECORD WAS RECEIVED Nov 9 1984 AND EXAMINED AND FILED Nov 13 1984

BY: John Ruggens
TITLE: DEPUTY COUNTY SURVEYOR

DOCUMENT No. _____

STATEMENT ON BACK OF SHEET

YES NO