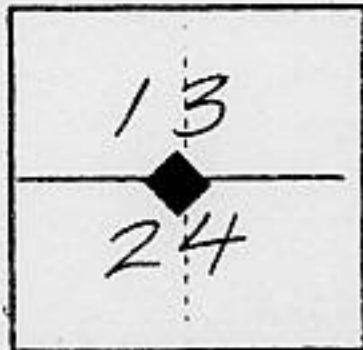


(For County Use Only)

CORNER RECORD

COUNTY OF PLACER T. 15 N R. 14 E MT DIABLO MERIDIAN CALIFORNIA

CORNER TYPE: GOV'T. CORNER MEANDER RANCHO CONTROL OTHER
CORNER IDENTIFICATION — DATE OF VISIT AUG 14 19 84



BASIS OF BEARING IS STAFF COMPASS BEARING, DECLINATION 17° EAST PER 1953 GRANITE CHIEF 7.5 MIN. QUAD. ANGLES MEASURED WITH TOPCON GTS-2 THEODOLITE. RECORD () W. BURTON, GLO 1891

CORNER — LEFT AS FOUND FOUND AND TAGGED REESTABLISHED OBLITERATED CORNER REBUILT

PHYSICAL DESCRIPTION OF CORNER FOUND; EVIDENCE AND METHOD USED TO IDENTIFY OR REESTABLISH

FOUND 3 FT DIA. X 1 FT HIGH STONE MOUND DEEPLY BURIED IN DUFF AND UNDISTURBED SOIL. FROM WHICH A 32" JEFFREY PINE WITH HEALED BLAZE BEARS N55°W, 14.8 FT (N55°W, 21 LKS 13.9 FT); 38" JEFFREY PINE WITH HEALED BLAZE BEARS S51°W, 24.1 FT (S51°W, 35 LKS 23.1 FT)

PHYSICAL DESCRIPTION OF MONUMENTS REBUILT OR PERPETUATED

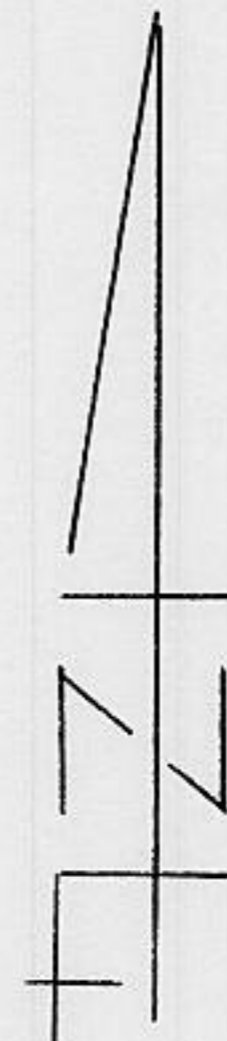
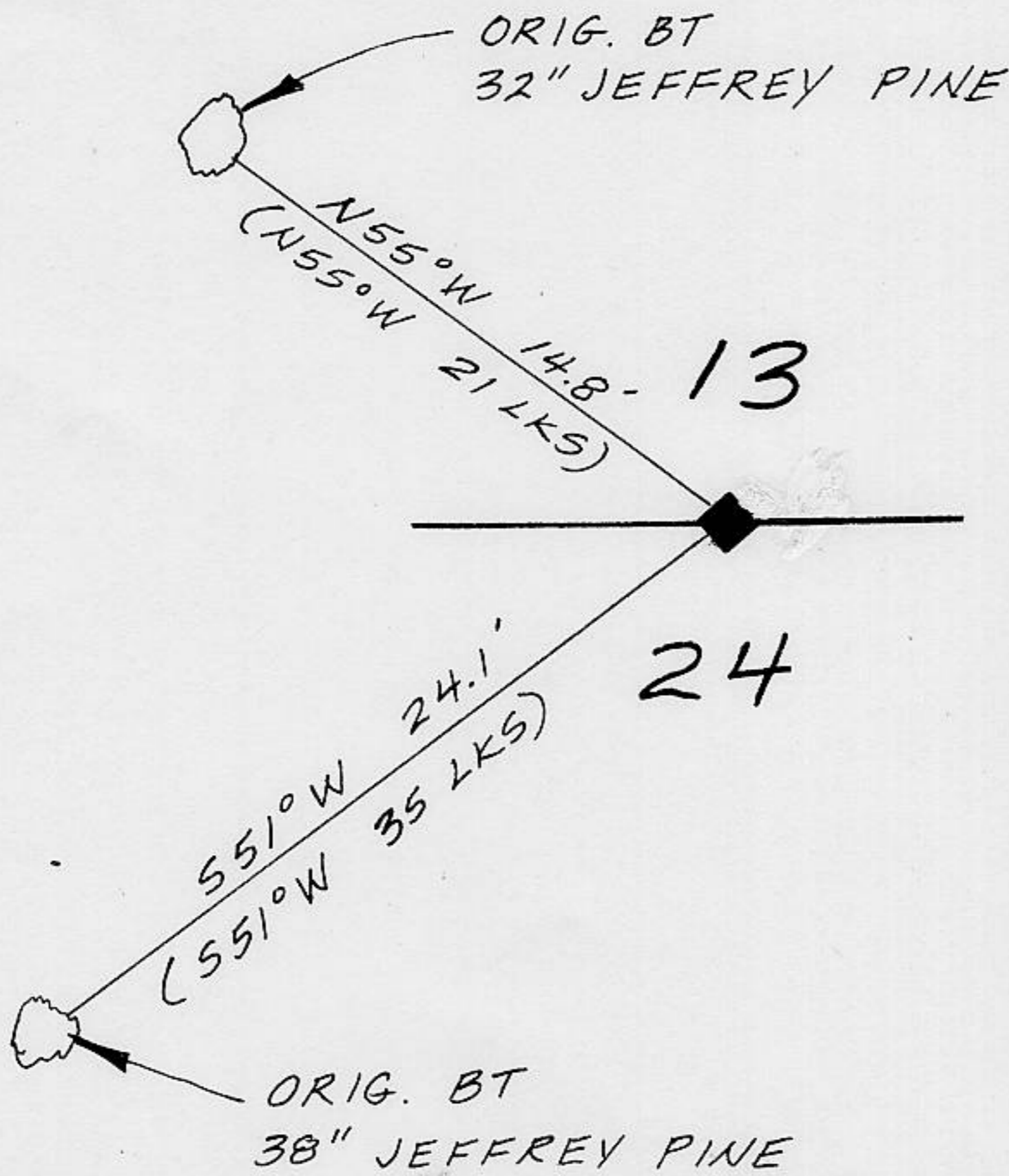
SET 2 1/2" X 30" SPLIT BASE ALUM. PIPE WITH 3 1/4" ALUM. CAP IN CENTER OF FOUND STONE MOUND. PLACED "DEEP-1" MAGNETIC LOCATOR DIRECTLY UNDER ALUM. PIPE.

NO NEW ACCESSORIES ESTABLISHED

CALIFORNIA COORDINATE SYSTEM ORDER: FIRST SECOND THIRD
STATIONS USED: NGS (USC & GS) STATE COUNTY OTHER STATION _____ STATION _____
ZONE _____ ELEVATION _____ NORTHINGS (Y) _____ EASTINGS (X) _____

(Fold)

SKETCH: (Include reference tie or witness points, remarks and topo of area)



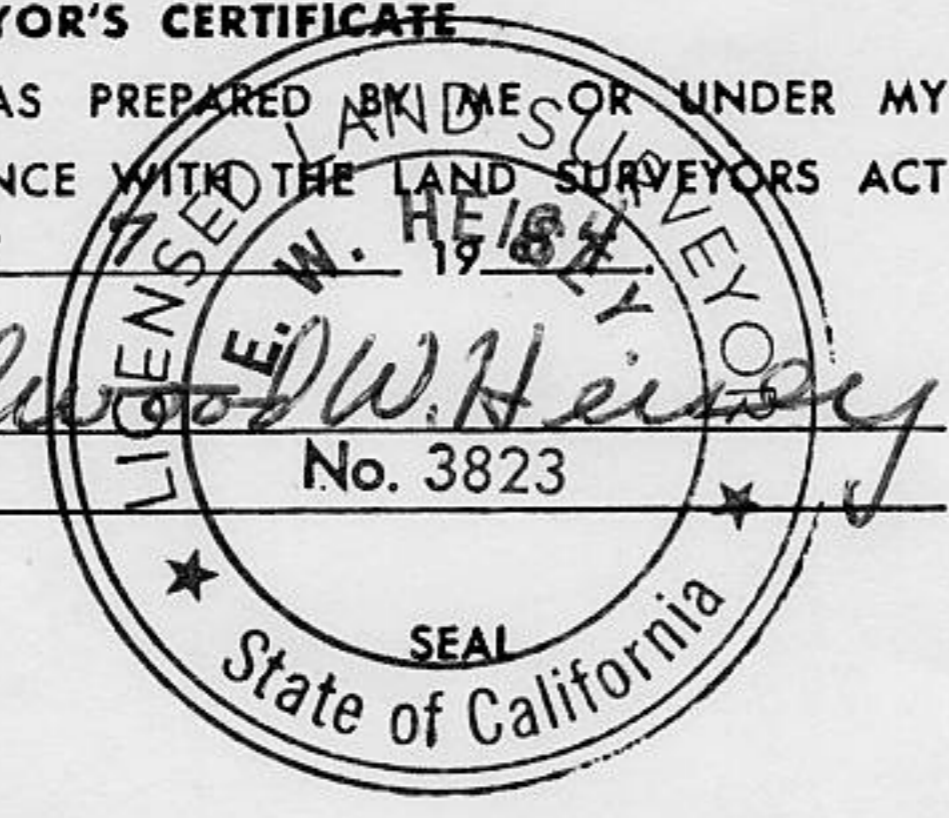
Book 1, Corner Records, Page 106

SURVEYOR'S CERTIFICATE

THIS CORNER RECORD WAS PREPARED BY ME OR UNDER MY DIRECTION IN CONFORMANCE WITH THE LAND SURVEYORS ACT ON November 1984

SIGNED: Edward W. Henry

L.S. or R.C.E. No.: _____



COUNTY SURVEYOR'S CERTIFICATE

THE CORNER RECORD WAS RECEIVED NOV 15 19 84 AND EXAMINED AND FILED DEC 17 19 84

BY: John R. Stephens
TITLE: DEPUTY COUNTY SURVEYOR

DOCUMENT No. _____

STATEMENT ON BACK OF SHEET

YES NO