

CORNER RECORD

COUNTY OF PLACER T. 16 N. R. 17 E. M.D.B.&M. MERIDIAN CALIFORNIA

CORNER TYPE: GOV'T. CORNER MEANDER RANCHO CONTROL OTHER

CORNER IDENTIFICATION - DATE OF VISIT AUGUST 19, 1988



LOT 33, CEDAR FLAT SUB'D. H MAPS 82

CORNER - LEFT AS FOUND FOUND AND TAGGED REESTABLISHED OBLITERATED CORNER REBUILT

PHYSICAL DESCRIPTION OF CORNER FOUND: EVIDENCE AND METHOD USED TO IDENTIFY OR REESTABLISH

● FOUND MONUMENT AS NOTED

PHYSICAL DESCRIPTION OF MONUMENTS REBUILT OR PERPETUATED

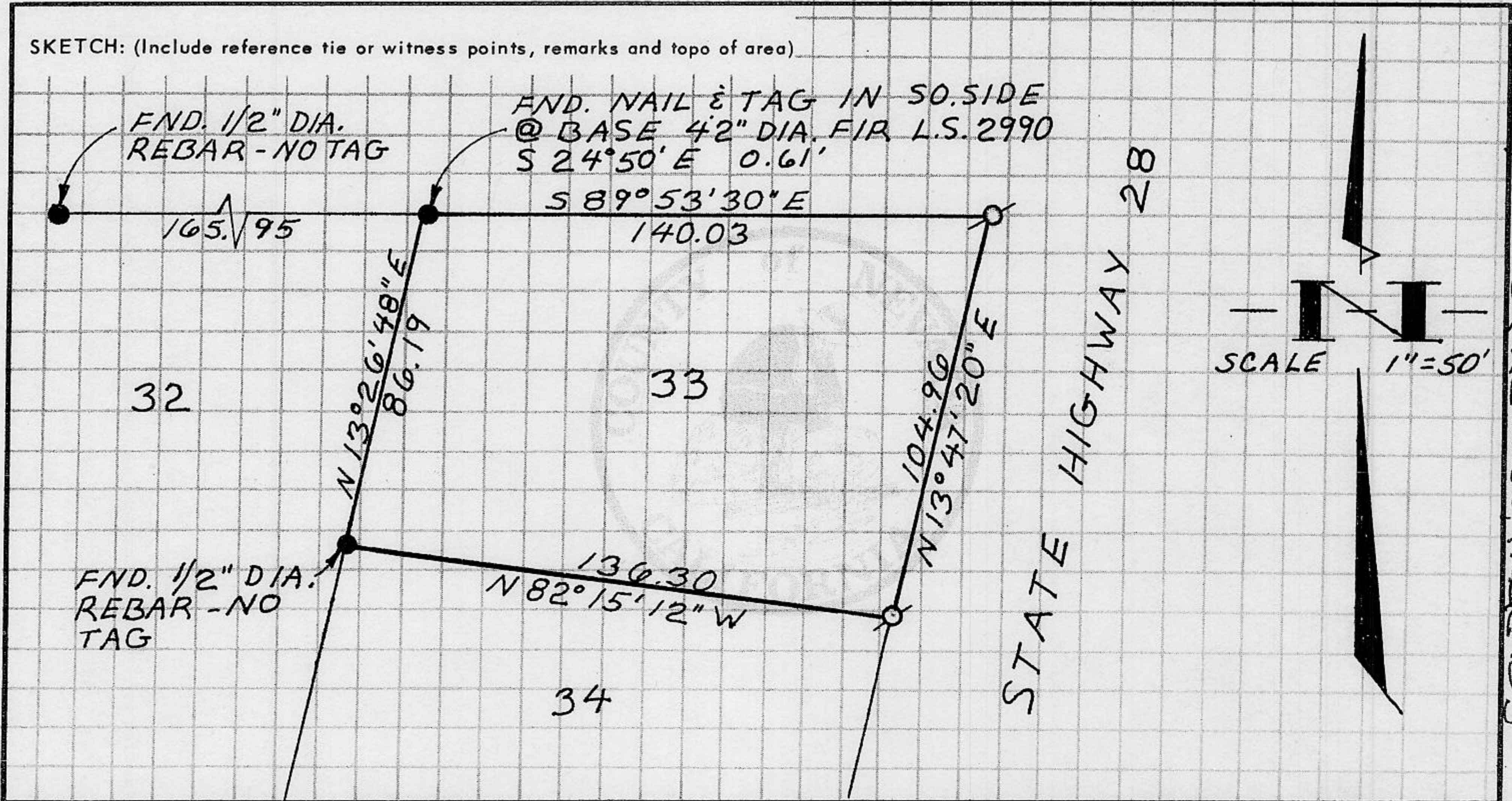
○ SET 5/8" DIA. REBAR WITH YELLOW PLASTIC CAP L.S. 3422

CALIFORNIA COORDINATE SYSTEM ORDER: FIRST SECOND THIRD N/A

STATIONS USED: NGS (USC & GS) STATE COUNTY OTHER STATION _____ STATION _____

ZONE _____ ELEVATION _____ NORTHINGS (Y) _____ EASTINGS (X) _____

SKETCH: (Include reference tie or witness points, remarks and topo of area)



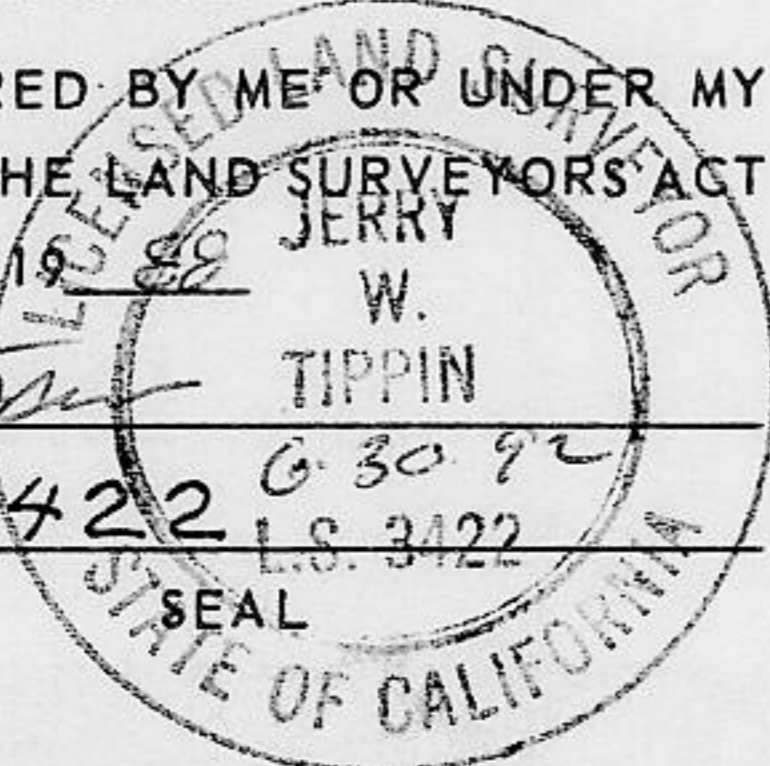
BOOK 1 CORNER RECORDS, PAGE 183

SURVEYOR'S CERTIFICATE

THIS CORNER RECORD WAS PREPARED BY ME OR UNDER MY DIRECTION IN CONFORMANCE WITH THE LAND SURVEYORS' ACT ON Oct 26 1988

SIGNED: Jerry W. Tippin TIPPIN

L.S. or R.C.E. No.: L.S. 3422



COUNTY SURVEYOR'S CERTIFICATE

THIS CORNER RECORD WAS RECEIVED 5/31 1989 AND EXAMINED AND FILED 6/15 1989

BY: John Ruggens TITLE: DEPUTY COUNTY SURVEYOR

DOCUMENT No. _____ STATEMENT ON BACK OF SHEET

YES NO