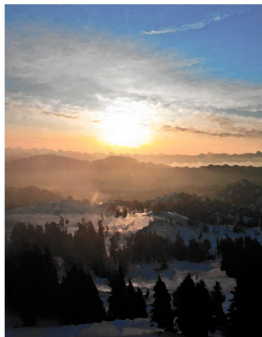
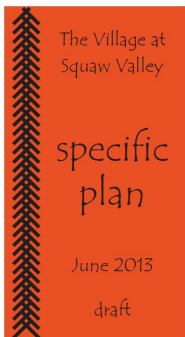


Village at Squaw Valley Specific Plan Project Update

Placer County Planning Services

September 2013



What is a Specific Plan ?

A specific plan is a planning document detailing goals, policies and implementing codes to systematically implement the general plan for a defined geographic area. A specific plan may address an area encompassing thousands of acres or an area as small as one to several acres. A specific plan may be developed to address a narrow range of policy issues such as allowable land uses, development character, public recreation facilities and infrastructure needs/constraints, or it may be as detailed as addressing all issues covered in the general plan of the jurisdiction in which the specific plan is proposed.

While preparation of a specific plan is often initiated by the local jurisdiction to establish a framework of policies and codes for development in a particular area, a specific plan may also be initiated by a private property owner or group of property owners. Adoption of a specific plan is a legislative act on the part of the Board or Council of the local planning agency and must be found to be consistent with the general plan. To learn more about specific plans, their structure and implementation, you may wish to visit the website of the State Office of Planning and Research at opr.ca.gov.

Corrections!

*The August newsletter stated that the County would circulate an Addendum to the previously prepared Notice of Preparation of an EIR (NOP). The County will circulate a Revised NOP, in track changes format, to describe in detail all changes to the project and to the scope of the EIR analysis. The Revised NOP will be prepared and circulated once the project applicant submits revised project information to the County. The precise timing for the applicant's submittal of a revised Specific Plan and the County's preparation and public circulation of the Revised NOP is not currently known, but is likely to be late 2013 or early 2014.

**The August newsletter stated that the Specific Plan project would be heard by the Squaw Valley Design Review Committee (SVDRC) for the first time at the October 2nd meeting of the SVDRC. Due to the expiration of Committee service terms for two of the five SVDRC members and the time needed to interview, select and confirm new DRC members, the SVDRC will not make its first consideration of this project until the meeting of November 7th.



At a Glance

• • •

Project Lead:

Alex Fisch, Senior Planner*
Planning Services Division
3091 County Center Drive
Auburn 95603
Phone (530)745-3081
afisch@placer.ca.gov
*County Project Manager

Upcoming Public Meetings:

What: Squaw Valley Municipal Advisory Council Meeting
Where: 305 Squaw Valley Road, Community Meeting Room (Public Service District Offices)
Date: October 3rd, 2013
Time: 6:00p.m.
Meeting Agenda: email subscriptions available at <http://www.placer.ca.gov/bos/calciunsubs1>
**NOTE: Please check the MAC agenda for actual agenda items as the Specific Plan project is not on every meeting agenda.

Specific Plan Information and Downloads Available at:

<http://www.placer.ca.gov/departments/communitydevelopment/planning>

Additional Comments or Questions?:

Contact Alex Fisch by phone at (530)745-3081 or by email at afisch@placer.ca.gov