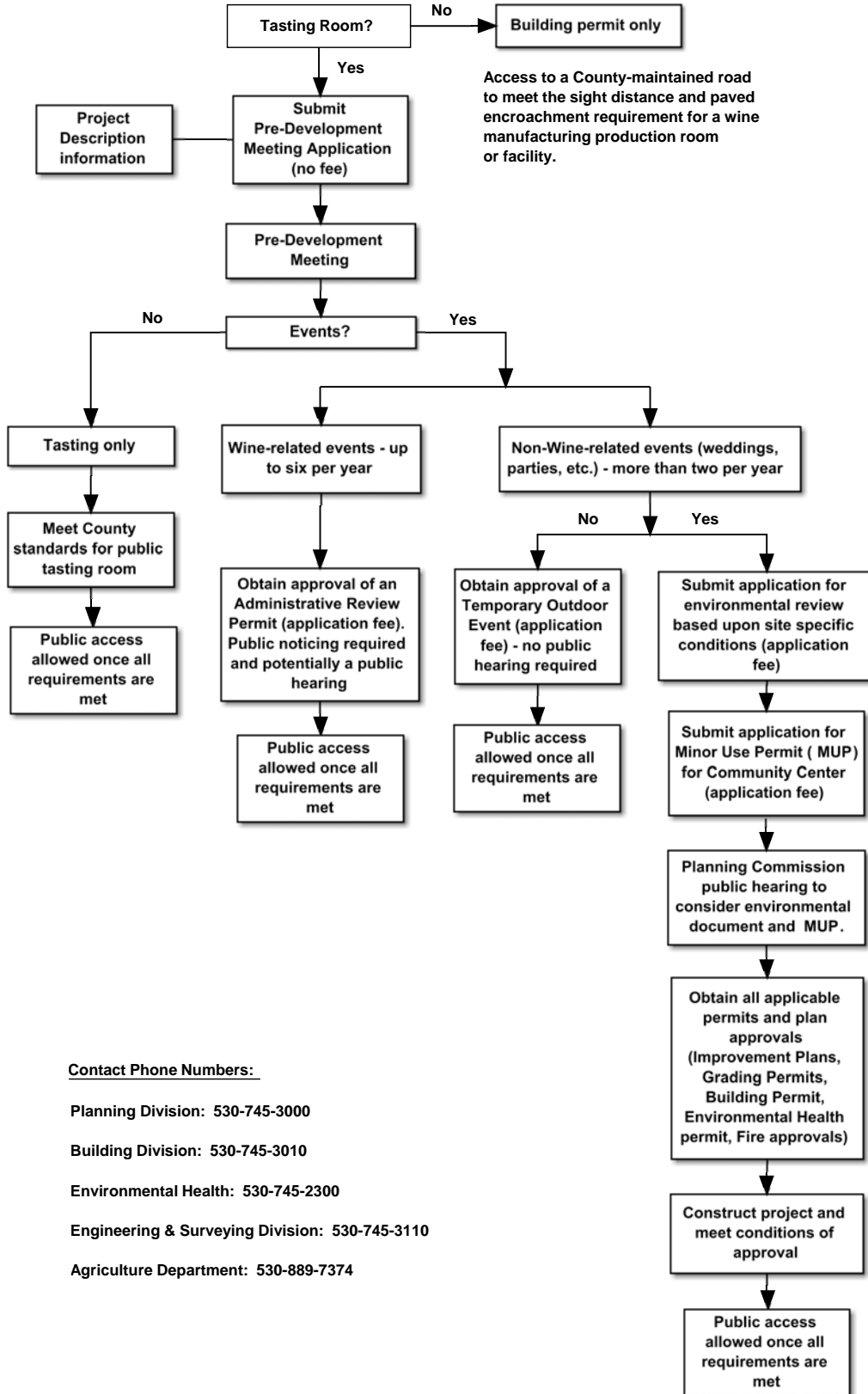


Opening a Small Winery (less than 20,000 cases per year)



Contact Phone Numbers:

Planning Division: 530-745-3000

Building Division: 530-745-3010

Environmental Health: 530-745-2300

Engineering & Surveying Division: 530-745-3110

Agriculture Department: 530-889-7374

NOTES:

- 1) The Winery Ordinance does not waive any requirements from the various departments/divisions.
- 2) A valid Building Permit is required before inviting the public into a building.