

# MEMORANDUM

COMMUNITY DEVELOPMENT RESOURCE AGENCY

County of Placer

TO: BOARD OF SUPERVISORS

DATE: SEPTEMBER 12, 2006

FROM: JOHN MARIN / WES ZICKER  
ENGINEERING AND SURVEYING DEPARTMENT

SUBJECT: MT. JUDAH RESIDENTIAL TRACT #940

---

## **ACTION REQUESTED / RECOMMENDATION**

Approve recording of the Final Map for Mt. Judah Residential which is located off of Donner Pass Road in the Sugar Bowl Ski Resort.

1. Approve recording and authorize the Chairman to sign the Final Map.
2. Authorize the Chairman to sign the Subdivision Improvement Agreement.
3. Instruct the Clerk of the Board to do the following:
  - a. Prepare the Final Map for recording.
  - b. Prepare the Subdivision Improvement Agreement for recording.

## **BACKGROUND / SUMMARY**

Mt. Judah Residential is a condominium development approved to create 62 condominiums on four building lots with two common areas, one open space lot as shown on the attached exhibit "A." The subdivision is located off of Donner Pass Road in the Sugar Bowl Ski Resort.

The improvements to be constructed with this subdivision consist of private roadways, drainage, utilities, survey monumentation, landscaping and miscellaneous items with maintenance provided by the Homeowners Association. Security sufficient to cover labor / materials and faithful performance has been posted with the County.

## **ENVIRONMENTAL CLEARANCE**

A Final EIR for Mt. Judah Residential has been found adequate to satisfy the requirements of CEQA for this project. This was approved by the Board of Supervisors on April 4, 2006. A Notice of Determination was filed with the County Clerk on April 6, 2006.

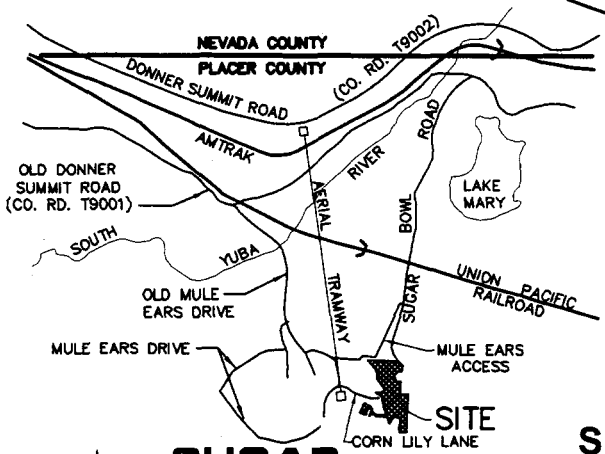
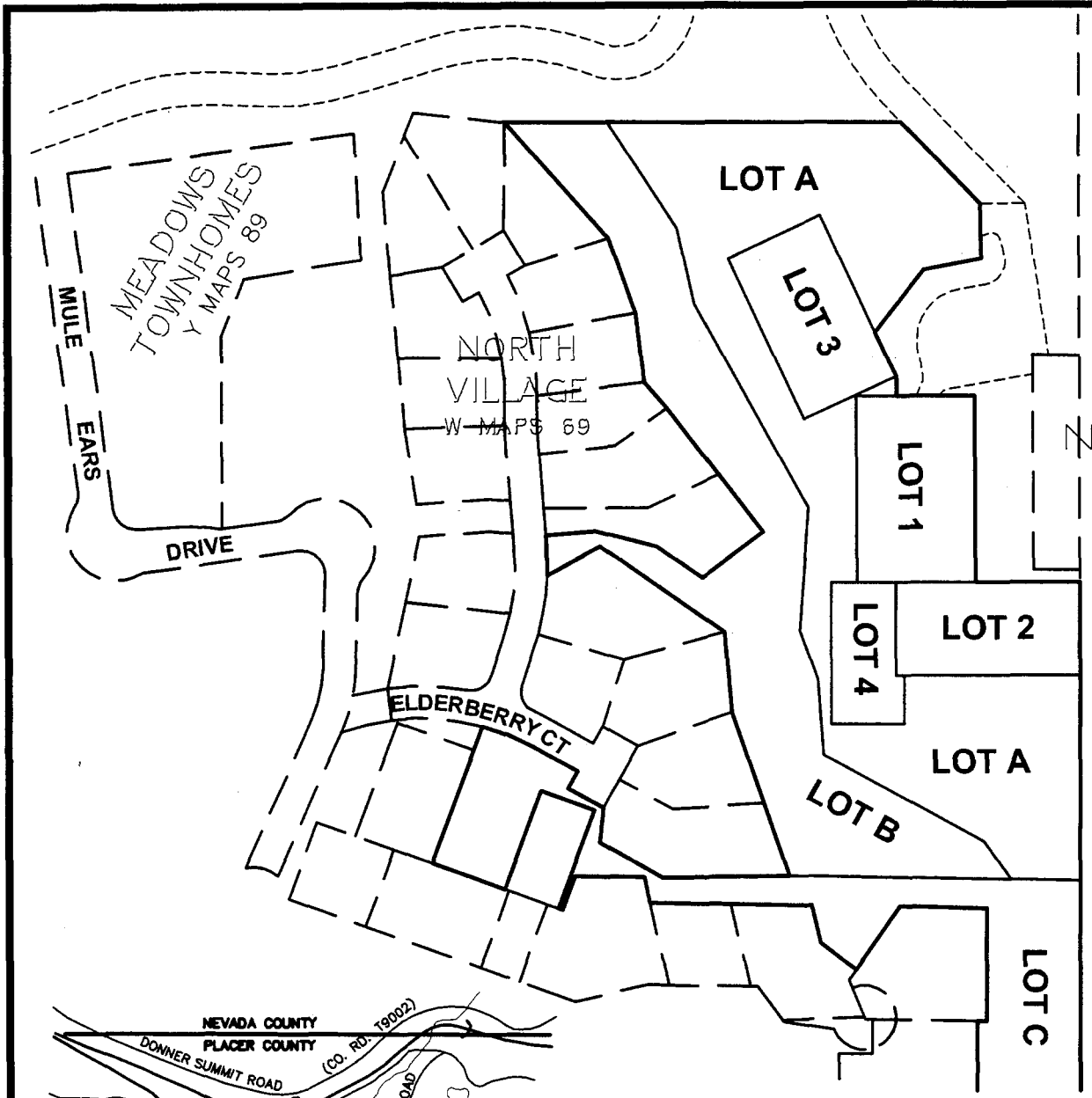
## **FISCAL IMPACT**

None.

Attachment: Exhibit A – Map of Subdivision

T:\ENGL\LisaFerro\BOS Memos\CDRA\Mt Judah 9-12-06.doc

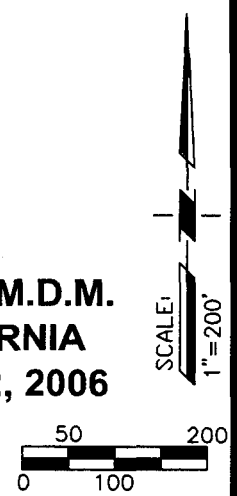
LANDS OF USA  
98-0097183



**SUGAR BOWL**  
**VICINITY MAP**

**EXHIBIT 'A'**  
**MT. JUDAH RESIDENTIAL**  
A PORTION OF  
SECTION 20, T.17N., R.15E., M.D.M.  
PLACER COUNTY, CALIFORNIA  
SCALE: 1"=100' AUGUST 22, 2006

**ANDREGG**  
GEOMATICS  
www.andregg.com  
800-400-7072



30