

# PUBLIC MEETING #1 — JUNE 18, 2019

## KINGS BEACH WESTERN APPROACH PROJECT

### PROJECT DESCRIPTION

This project is looking to reconfigure the State Route (SR) 267 and North Lake Boulevard (SR 28) intersection within the County of Placer to enhance the mobility of all roadway users, and to expand the streetscape aesthetics of the Commercial Core. The project will connect with the adjacent complete street improvements completed in October 2017. The project is currently funded through the Project Approval (PA) and Environmental Document (ED) Phase. The County is funding the PA & ED phase with Surface Transportation Block Grant (STBG) funds and Local County funds. Funding of future project phases is yet to be determined.

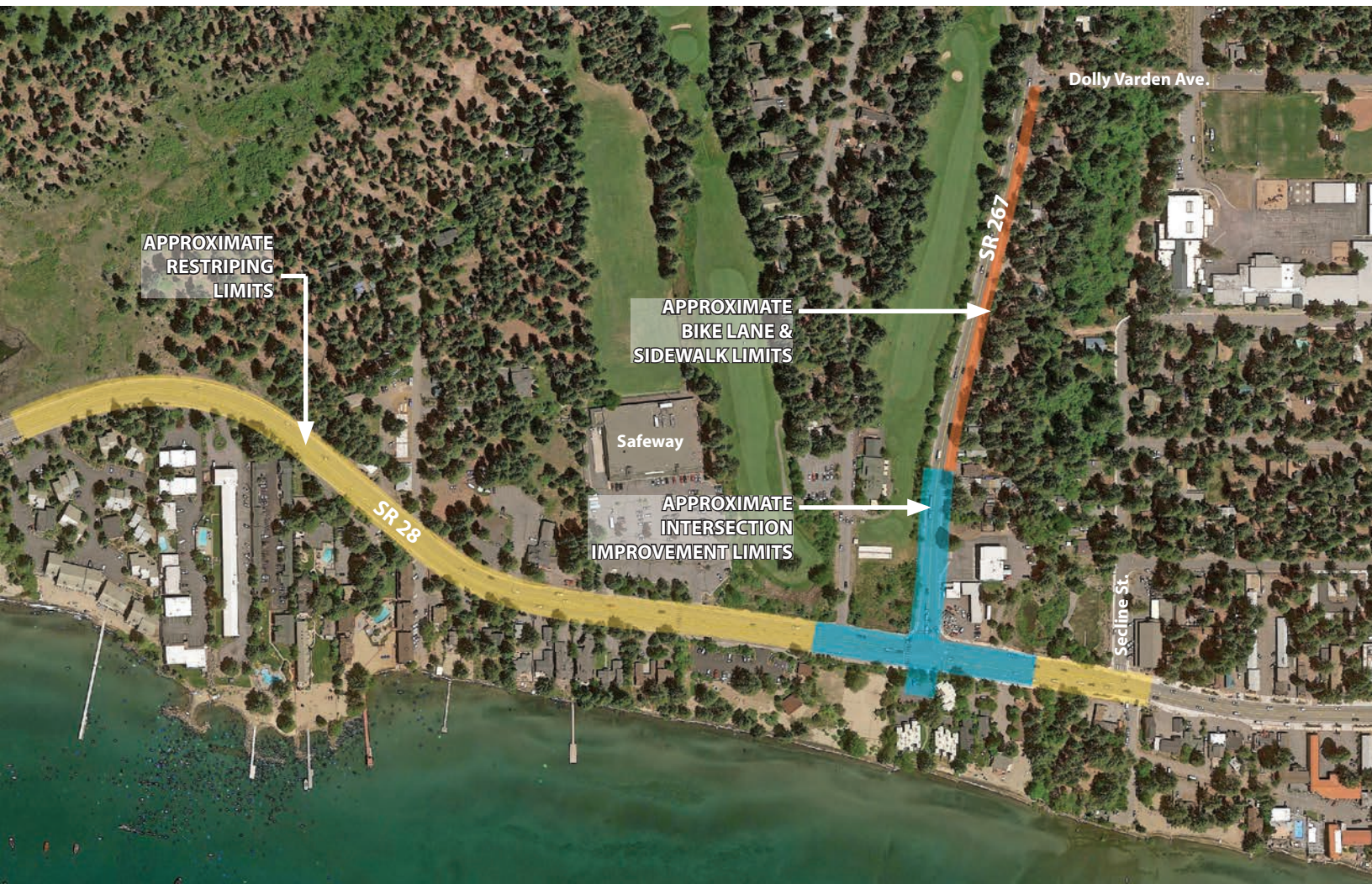
### PROJECT DETAILS

SR 28 will be restriped to one lane in each direction with a two way left turn, and look at providing sidewalks and bike lanes up SR 267 to Dolly Varden Ave. These changes are being proposed to improve overall accessibility, mobility and safety for all roadway users while providing a continuous complete street corridor. The County desires to provide better connectivity between the downtown core and the west side of the community that extends to all transportation modes.

### PROJECT GOALS

- Improve safety and mobility for bicycles and pedestrians.
- Provide a complete street corridor that connects to the Kings Beach Commercial Core Improvement Project.
- Consistency with local, regional and state planning.

### PROJECT STUDY AREA



**Please provide any additional comments you may have.**

---

---

---

---

---

---

---

---

---

---

---

---

---

---

---

---

---

---

---

---

---

---

---

---

**If you would like to be notified of project updates, please provide your contact information.**

Name: \_\_\_\_\_

Email: \_\_\_\_\_

For More Information Contact:  
**Dan LaPlante, P.E.**  
 Placer County Public Works  
 p: (530) 581-6231  
 e: dlaplant@placer.ca.gov

