

**Mission Statement:**

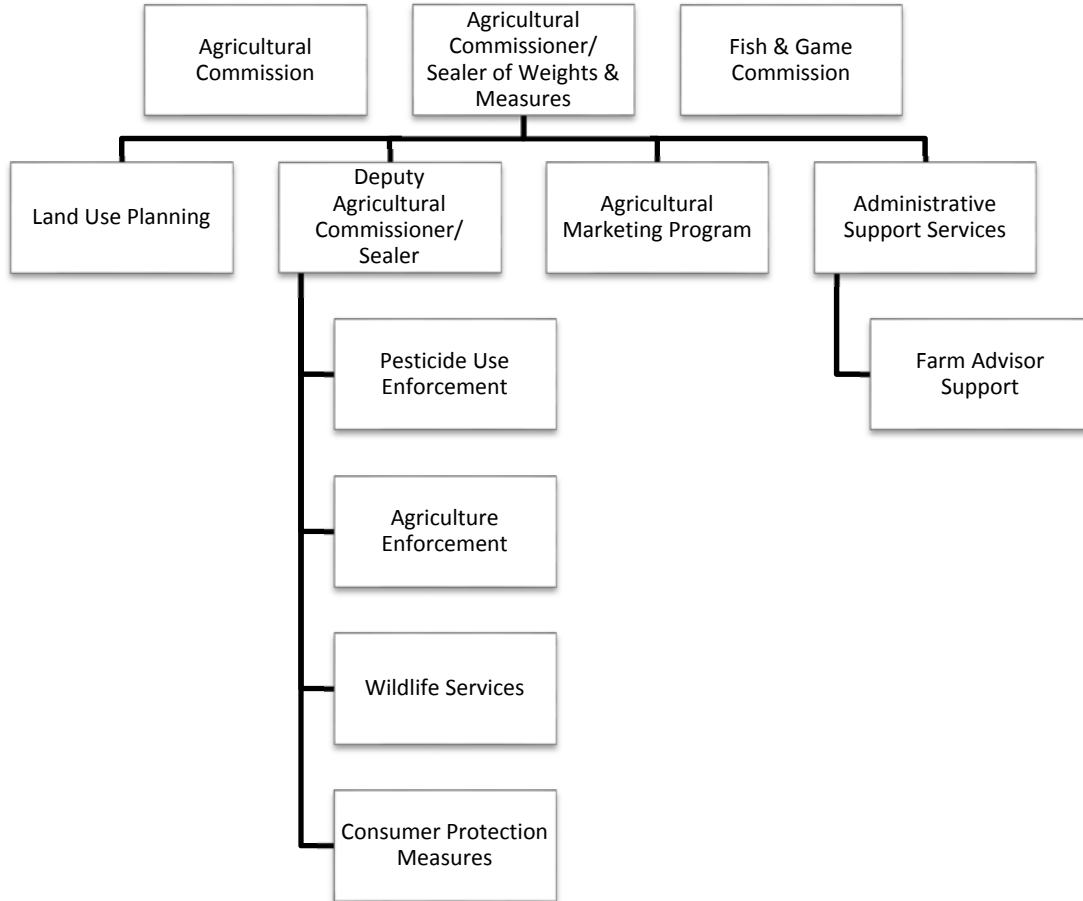
The mission of the Agricultural Commissioner/Sealer of Weights and Measures is to protect human health and safety, the environment, and the consumer. We protect the agricultural industry by detecting and eradicating detrimental and invasive pests, protect the public and environment by promoting the safe use of pesticides, helping to manage human/wildlife conflicts, and increase consumer confidence in local businesses by protecting against fraud and deception to foster equity in the market place.

The Agricultural Marketing Program seeks to increase the sales and profitability of local farms and ranches in order to promote economic development, maintain the county's agricultural heritage, and preserve open space for future generations.

<b>Agricultural Commissioner / Sealer of Weights &amp; Measures COST CENTER SUMMARY Fiscal Year 2019-20</b>					
<b>Cost Center</b>	<b>FY 2017-18 Actuals</b>	<b>FY 2018-19 Actuals</b>	<b>FY 19-20 Proposed Budget</b>	<b>FY 19-20 Final Budget</b>	<b>YOY % Change</b>
<b>General Fund</b>					
Agricultural Commissioner / Sealer	\$ 2,644,126	\$ 2,535,819	\$ 3,088,537	\$ 3,120,865	23.07%
Farm Advisor	\$ 497,365	\$ 536,848	\$ 531,961	\$ 532,482	-0.81%
<b>Fish and Game Fund</b>					
Fish and Game	\$ 6,137	\$ 7,006	\$ 11,903	\$ 11,903	69.90%

<b>Funded Positions</b>					
Agricultural Commissioner / Sealer	14	14	19	19	
<b>Total Funded Positions</b>	<b>14</b>	<b>14</b>	<b>19</b>	<b>19</b>	<b>35.71%</b>
<b>Total Allocated Positions</b>	<b>14</b>	<b>14</b>	<b>19</b>	<b>19</b>	<b>35.71%</b>

# AGRICULTURAL COMMISSIONER/ SEALER OF WEIGHTS AND MEASURES



**Purpose:**

The Agricultural Commissioner promotes local and regional public awareness of Placer County agriculture, the sale of Placer County agricultural products, and encourages agriculture-related tourism as a means of economic diversification for the farming community. In addition, department programs protect Placer County’s agricultural and natural resources against damage caused by exotic insects, diseases, and weeds; assure compliance with the federal and state laws pertaining to the proper and safe use of pesticides; and advocate for the county’s “Right-to-Farm” ordinance protection of farms from nuisance complaints which can limit agricultural productivity and efficiency. The Sealer of Weights and Measures program enforces laws and regulations that assure market-place equity for commercial transactions involving count, weight, or measure. The UCCE Farm Advisor program facilitates the delivery of research-based information to the public, schools, and the farming and ranching community through multiple programs that include 4-H Youth Development, Master Gardener/Master Composter, Horticulture and Small Farms, Livestock and Natural Resources, and Nutrition.

**Major Budget Adjustments and Initiatives:**

- Increase in Salaries and Benefits of \$127,795 for one Senior Agricultural and Standards Inspector allocation, funded by increased SB1 gas tax revenue and device registration fees.
- Increase in equipment of \$37,500 and transportation and travel of \$12,000 for a half-ton four wheel drive truck for increased field operations and inspections, funded by increased SB1 gas tax revenue.
- Increase in buildings and improvements of \$50,000 for initial phase of shop expansion into Building 307 at the Placer County Government Center campus, funded by SB1 gas tax revenue and device registration fees.
- Increase in agriculture expenditures of \$20,000 for Crop Report Plus, to expand economic analysis of Placer County’s agricultural sector, funded by increased SB1 gas tax revenue.
- Re-budget \$50,000 for department activity database replacement and enhancement, funded by the General Fund.
- Re-budget \$25,000 of expenditures for electric vehicle charging station testing equipment, funded from prior department trust funds via the General Fund.

Program Title	Program Description	Program Cost
Agriculture Enforcement	Prevent harmful invasive insect, weed, and disease pests from establishing in Placer County. Regulate Placer County’s Certified Farmers’ Markets, Certified Producers, and Organic Growers.	\$1,066,860
Pesticide Use Enforcement	Ensure that pesticides are used in a manner that is safe, legal, and protects the environment.	\$454,804
Weights and Measures	Inspect gasoline pumps, grocery store scales, propane dispensers, and other commercial weighing and measuring devices to ensure consumers are fairly charged.	\$493,316
Wildlife Services	Assist citizens, businesses, schools, public agencies, farmers, and ranchers with wildlife related issues.	\$543,393
Agricultural Marketing	Promote sales of agricultural products produced by Placer County farmers and ranchers.	\$190,909

**County of Placer**  
**Financing Sources and Uses by Budget Unit by Object**  
**Governmental Funds**  
**Fiscal Year 2019 - 20**

**Budget Unit:** General Fund  
**Function:** Reporting Public Protection  
**Cost Center:** CC02000 Agricultural Commission/Sealer (PAS 22210)

Detail by Revenue Category and Expenditure Object	2017 - 18 Actual	2018 - 19 Actual	2019 -20 Recommended	2019 -20 Adopted by Supervisors
1	2	3	4	5
<b>Revenue</b>				
Agricultural Services		\$93,623	\$50,000	\$50,000
Other Fees and Charges		\$211,596	\$225,000	\$225,000
Other Court Fines		\$4,373		
Aid from Other Agencies		\$5,049	\$5,000	\$5,000
State Aid - Other Programs		\$1,185,973	\$1,231,660	\$1,231,660
Miscellaneous		\$985	\$3,000	\$3,000
<b>Total Revenue</b>		<b>\$1,501,599</b>	<b>\$1,514,660</b>	<b>\$1,514,660</b>
<b>Expenditures / Appropriations</b>				
Agriculture		\$2,199	\$53,500	\$53,500
Pesticides		\$11,226		
Buildings & Improvements			\$100,000	\$50,000
Clothing and Personal		\$1,206		
Communication Services Expense		\$16,581	\$19,528	\$19,670
Employee Group Insurance		\$147,271	\$208,950	\$224,005
Retired Employee Group Insurance		\$105,653		
Equipment			\$62,500	\$62,500
Food		\$100		
Maintenance - Janitorial		\$11,956	\$11,389	\$11,602
Refuse Disposal		\$25		
Insurance		\$11,168	\$12,503	\$12,503
Transfer Out A-87 Costs		\$145,380	\$69,943	\$69,943
Fuels & Lubricants		\$446	\$1,000	\$1,000
Maintenance		\$10,256	\$36,500	\$86,500
Campus Services - PCGC		\$9,986	\$9,916	\$8,001
Drug & Alcohol Testing		\$142	\$225	\$225
Laboratory Supplies		\$591		
Professional / Membership Dues		\$4,301	\$4,500	\$4,500
Small Tools & Instruments		\$953		

**County of Placer**  
**Financing Sources and Uses by Budget Unit by Object**  
**Governmental Funds**  
**Fiscal Year 2019 - 20**

**Budget Unit:** General Fund  
**Function:** Reporting Public Protection  
**Cost Center:** CC02000 Agricultural Commission/Sealer (PAS 22210)

Detail by Revenue Category and Expenditure Object	2017 - 18 Actual	2018 - 19 Actual	2019 -20 Recommended	2019 -20 Adopted by Supervisors
1	2	3	4	5
Misc Expense		\$432		
Postage		\$8,544	\$6,280	\$6,280
Other Supplies		\$10,469	\$6,500	\$6,500
Procurement Card Purchase / Clearing Account		\$306		
Printing		\$8,862	\$12,000	\$12,000
Professional and Special Services - Technical, Engineering and Environmental		\$16,272	\$15,144	\$15,433
Professional and Special Services - Information Technology		\$97,069	\$97,697	\$98,638
Professional and Special Services - General		\$6,026	\$141,796	\$141,796
Other Postemployment Benefits (OPEB)		\$59,876	\$109,200	\$109,200
401 (k) Employer Match		\$1,106	\$1,500	\$1,500
Payroll Tax		\$69,799	\$99,945	\$99,945
Retirement		\$228,545	\$375,468	\$375,468
Uniform Allowance		\$7,096	\$11,820	\$11,820
Extra Help		\$94,900	\$105,500	\$105,500
Taxable Meal Reimbursements			\$700	\$700
Overtime and Call Back		\$4,270	\$10,000	\$10,000
Salary Savings			(\$74,459)	(\$74,459)
Salaries and Wages		\$832,641	\$1,220,167	\$1,220,167
Cafeteria Plans (Non-PERS)		\$39,513	\$64,135	\$64,135
Employee Benefits Systems		\$21,487	\$17,295	\$17,295
Project Costs		\$61		
Advertising		\$142,029		
Commissioner's Fees		\$2,150	\$4,320	\$4,320
Special Department Expense		\$4,155	\$2,000	\$2,000
PC Acquisition		\$1,362	\$22,000	\$22,000
Small Equipment		\$341		
Operating Transfer Out - Capital Improvements		\$214,879		
Transportation and Travel		\$141,825	\$203,488	\$221,263
Utilities		\$11,300	\$11,128	\$10,956

**County of Placer**  
 Financing Sources and Uses by Budget Unit by Object  
 Governmental Funds  
 Fiscal Year 2019 - 20

**Budget Unit:** General Fund  
**Function:** Reporting Public Protection  
**Cost Center:** CC02000 Agricultural Commission/Sealer (PAS 22210)

Detail by Revenue Category and Expenditure Object	2017 - 18 Actual	2018 - 19 Actual	2019 -20 Recommended	2019 -20 Adopted by Supervisors
1	2	3	4	5
Workers Comp Insurance		\$31,063	\$34,458	\$34,458
<b>Total Expenditures / Appropriations</b>		<b>\$2,535,819</b>	<b>\$3,088,537</b>	<b>\$3,120,865</b>
<b>Total</b>		<b>(\$1,034,219)</b>	<b>(\$1,573,878)</b>	<b>(\$1,606,206)</b>

**County of Placer**  
 Financing Sources and Uses by Budget Unit by Object  
 Governmental Funds  
 Fiscal Year 2019 - 20

**Budget Unit:** General Fund Grants  
**Function:** Reporting Public Protection  
**Cost Center:** CC02000 Agricultural Commission/Sealer (PAS 22210)

Detail by Revenue Category and Expenditure Object	2017 - 18 Actual	2018 - 19 Actual	2019 -20 Recommended	2019 -20 Adopted by Supervisors
1	2	3	4	5
<b>Revenue</b>				
Agricultural Services		\$31,832		
State Aid - Other Programs		\$7,430		
Aid from Other Agencies		\$4,079		
<b>Total Revenue</b>		<b>\$43,341</b>		
<b>Expenditures / Appropriations</b>				
Agriculture		\$94		
Communication Services Expense		\$654		
Employee Group Insurance		\$32,520		
Misc Expense		\$75		
Printing		\$259		
Other Supplies		\$364		
Retirement		\$55,106		
Other Postemployment Benefits (OPEB)		\$13,486		
401 (k) Employer Match		\$332		
Payroll Tax		\$14,680		
Overtime and Call Back		\$110		
Salaries and Wages		\$190,939		
Extra Help		\$4,199		
Cafeteria Plans (Non-PERS)		\$10,719		
Uniform Allowance		\$2,355		
Transportation and Travel		\$3,767		
Workers Comp Insurance		\$1,851		
<b>Total Expenditures / Appropriations</b>		<b>\$331,509</b>		
<b>Total</b>		<b>(\$288,167)</b>		

Farm Advisor – Cost Center 13001

Purpose:

The Farm Advisor Department is a unique example of partnership among three levels of government (Placer County, UCCE, and the U.S. Department of Agriculture). This partnership facilitates the delivery of research-based information and informal educational opportunities in agriculture; natural resources; family, youth, and consumer sciences. University professionals and staff provide leadership. Programs include 4-H Youth Development, Master Gardeners, Horticulture and Small Farms, Livestock and Natural Resources, and Nutrition.

Major Budget Adjustments and Initiatives:

- None.

Program Title	Program Description	Program Cost
4-H Youth Development	Provides educational and leadership programs aimed at helping youth develop into mature, healthy, capable, and contributing citizens. Programs emphasize building skills in inquiry, leadership, public speaking, and community service. Programs include embryology, robotics, public speaking, summer camp, leadership, cooking, sewing, and animal-raising, among others. There are fourteen 4-H Clubs in Placer County.	\$178,299
Master Gardener	Trained volunteers provide Placer County residents with gardening, composting, pest management and water conservation information and education. Volunteers deliver workshops and community events, manage a demonstration garden, and provide individual assistance by phone and e-mail; providing over 7,000 hours of volunteer service. The Master Gardener Coordinator manages the Senior Community Garden.	\$118,911
Nutrition	UC CalFresh provides nutrition education, physical activity, gardening experience, and produce tasting to low-income schools and CalFresh eligible families. UC Cal Fresh provides nutrition education and produce tasting to low-income adults in a variety of settings. Three health fairs are held at schools to promote nutrition, healthy living, and physical activity.	\$76,957
Horticulture and Small Farms Program	Provides training and technical assistance to beginning and experienced small farmers in production, business planning, risk management, food safety, soil, water, and integrated pest management through workshops, field days, and individual farm calls. The program maintains the Foothill Farming website and Facebook page to provide information and a calendar of workshops for area small farmers.	\$77,335
Livestock and Natural Resources	Provides training for beginning and experienced ranchers on grazing planning and management, livestock husbandry, soils and pasture management, marketing, business planning, and risk management. Program delivery is accomplished through workshops, field days, short courses, farm calls, and group pasture walks. Planning assistance is provided for the development of a business plan for a USDA inspected meat processing plant for Placer County.	\$80,991



**County of Placer**  
**Financing Sources and Uses by Budget Unit by Object**  
**Governmental Funds**  
**Fiscal Year 2019 - 20**

**Budget Unit:** General Fund  
**Function:** Reporting Education  
**Cost Center:** CC13001 Farm Advisor

Detail by Revenue Category and Expenditure Object	2017 - 18 Actual	2018 - 19 Actual	2019 -20 Recommended	2019 -20 Adopted by Supervisors
1	2	3	4	5
<b>Revenue</b>				
Other Fees and Charges		\$4,500		
Aid from Other Agencies			\$4,500	\$4,500
<b>Total Revenue</b>		<b>\$4,500</b>	<b>\$4,500</b>	<b>\$4,500</b>
<b>Expenditures / Appropriations</b>				
Agriculture		\$1,447		
Communication Services Expense		\$11,460	\$11,787	\$11,897
Employee Group Insurance		\$38,013	\$40,378	\$41,986
Retired Employee Group Insurance		\$17,762		
Maintenance - Janitorial		\$12,292	\$13,091	\$13,311
Insurance		\$1,255	\$1,368	\$1,368
Transfer Out A-87 Costs		\$17,068	\$33,638	\$33,638
Intra Fund Services		\$67,979		
Parts		\$461		
Maintenance		\$2,697	\$2,800	\$2,800
Campus Services - PCGC		\$10,069	\$11,035	\$9,350
Small Tools & Instruments		\$302	\$2,000	\$2,000
Other Supplies		\$11,558	\$22,514	\$12,514
Postage		\$2,719	\$2,770	\$2,770
Procurement Card Purchase / Clearing Account		\$106		
Printing		\$4,341	\$7,175	\$7,175
Operating Materials		\$1,209	\$1,209	\$1,209
Professional and Special Services - Technical, Engineering and Environmental		\$55,582	\$80,984	\$101,279
Professional and Special Services - Information Technology		\$17,223	\$20,655	\$20,810
Professional and Special Services - General		\$1,298	\$2,750	\$2,750
Other Postemployment Benefits (OPEB)		\$15,880	\$20,475	\$20,475
Payroll Tax		\$11,740	\$12,432	\$12,432
Retirement		\$41,919	\$48,894	\$48,894
Salaries and Wages		\$154,419	\$162,514	\$162,514

**County of Placer**  
 Financing Sources and Uses by Budget Unit by Object  
 Governmental Funds  
 Fiscal Year 2019 - 20

**Budget Unit:** General Fund  
**Function:** Reporting Education  
**Cost Center:** CC13001 Farm Advisor

Detail by Revenue Category and Expenditure Object	2017 - 18 Actual	2018 - 19 Actual	2019 -20 Recommended	2019 -20 Adopted by Supervisors
1	2	3	4	5
Extra Help			\$5,092	\$90
Salary Savings			(\$11,643)	(\$11,643)
Cafeteria Plans (Non-PERS)		\$9,234	\$9,751	\$9,751
Small Equipment		\$2,500		
Employee Benefits Systems		\$4,558	\$3,706	\$3,706
Special Department Expense		\$78		
Transportation and Travel		\$9,923	\$15,000	\$10,000
Utilities		\$11,620	\$11,444	\$11,264
Workers Comp Insurance		\$137	\$141	\$141
<b>Total Expenditures / Appropriations</b>		<b>\$536,848</b>	<b>\$531,961</b>	<b>\$532,482</b>
<b>Total</b>		<b>(\$532,348)</b>	<b>(\$527,461)</b>	<b>(\$527,982)</b>

Fish and Game Commission – Cost Center 02001

Purpose:

The Fish and Game Commission advises the Board of Supervisors and provides a community forum for citizens to express their concerns, opinions, and views on matters affecting the conservation, propagation, preservation, and management of fish and wildlife within Placer County. The Commission coordinates efforts in habitat improvement, public awareness and resource education, and issues grant awards to individuals, schools, non-profit organizations, and other organizations using revenue received from Department of Fish and Wildlife enforcement actions.

Major Budget Adjustments and Initiatives:

- None.

Program Title	Program Description	Program Cost
Fish and Game	Advise the Board of Supervisors and provide a community forum for citizens to express concerns, opinions, and views on matters affecting the conservation, propagation, preservation, and management of fish and wildlife within Placer County. Coordinate efforts in habitat improvement, public awareness and resource education. Issue grant awards to individuals, schools, non-profit organizations, and other organizations using revenue received from Department of Fish and Wildlife enforcement actions.	\$11,903

**County of Placer**  
**Financing Sources and Uses by Budget Unit by Object**  
**Governmental Funds**  
**Fiscal Year 2019 - 20**

**Budget Unit:** Fish and Game Fund  
**Function:** Reporting Public Protection  
**Cost Center:** CC02001 Fish and Game

Detail by Revenue Category and Expenditure Object	2017 - 18 Actual	2018 - 19 Actual	2019 -20 Recommended	2019 -20 Adopted by Supervisors
1	2	3	4	5
<b>Revenue</b>				
Other Court Fines		\$21,383	\$3,000	\$3,000
Forfeitures and Penalties		\$756	\$2,000	\$2,000
Investment Income		\$323	\$200	\$200
Contributions from General Fund		\$6,000	\$6,000	\$6,000
<b>Total Revenue</b>		<b>\$28,462</b>	<b>\$11,200</b>	<b>\$11,200</b>
<b>Expenditures / Appropriations</b>				
Communication Services Expense		\$135	\$750	\$750
Insurance		\$17	\$11	\$11
Transfer Out A-87 Costs		\$860	\$892	\$892
Postage			\$50	\$50
Other Supplies			\$100	\$100
Professional and Special Services - General		\$700	\$1,000	\$1,000
Commissioner's Fees		\$1,410	\$2,100	\$2,100
Special Department Expense		\$2,450	\$5,000	\$5,000
Transportation and Travel		\$1,434	\$2,000	\$2,000
<b>Total Expenditures / Appropriations</b>		<b>\$7,006</b>	<b>\$11,903</b>	<b>\$11,903</b>
<b>Total</b>		<b>\$21,456</b>	<b>(\$703)</b>	<b>(\$703)</b>