



PLACER, County Recorder
RYAN RONCO
DOC- 2017-0070911-00
JOURNAL

WEDNESDAY, SEP 13, 2017 13:58:12
MIC \$3.00 | AUT \$0.00 | SBS \$0.00
ERD \$0.00 | RED \$0.00 | MAP \$5.00
ADD \$0.00

RECORDING REQUESTED BY:

Ttl Pd \$8.00 Rcpt # 02626929
CLK98C1382/SM/1-1

Placer County Executive Office

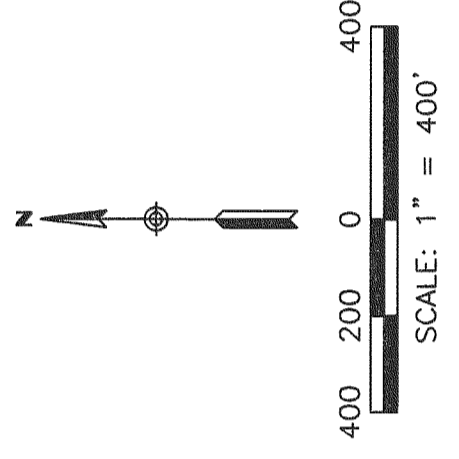
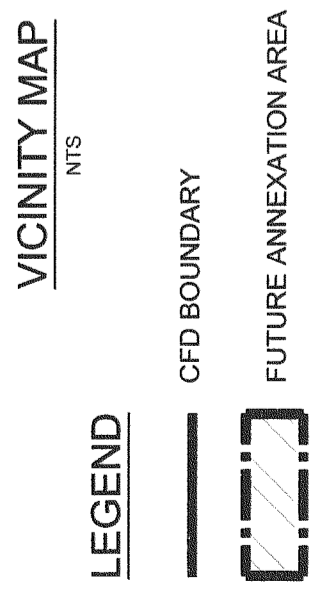
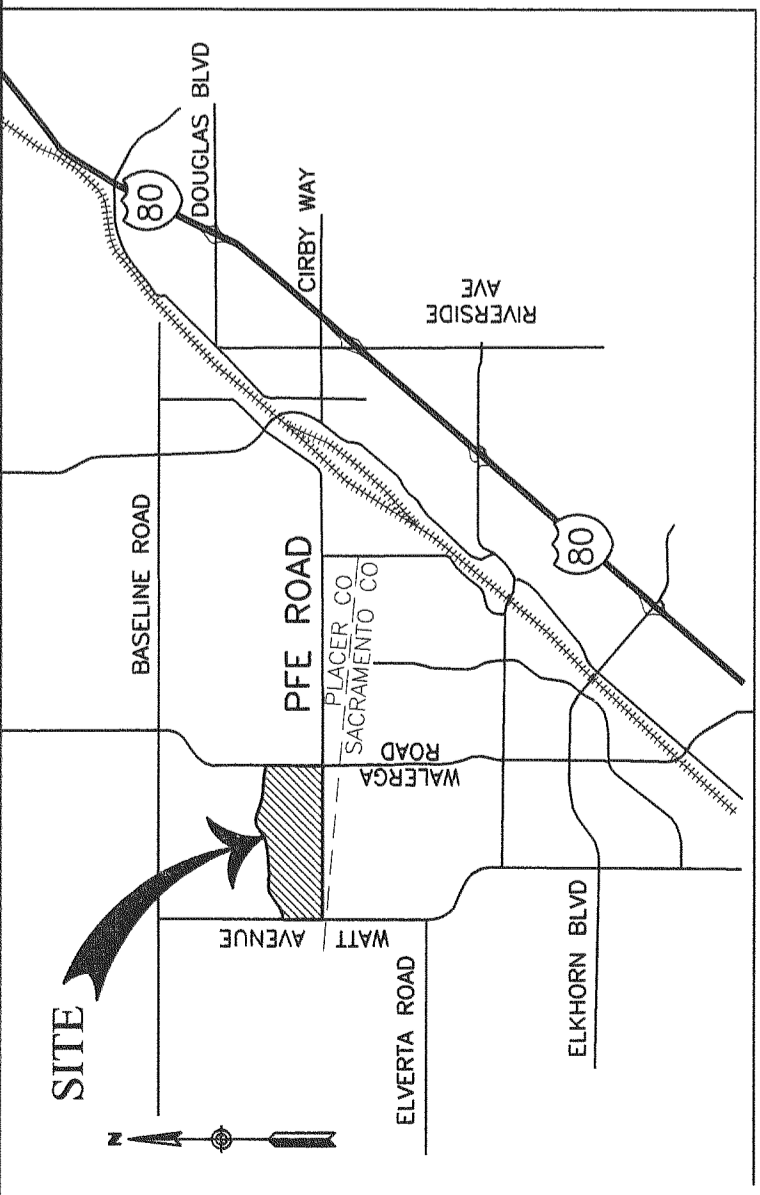
TYPE OF MAP: Community Facilities District Map

BOOK: 3 PAGE: 76

NAME: County of Placer
Community Facilities District No. 2017-1
Riolo Vineyard Specific Plan
Proposed Boundaries

NO. OF SHEETS: 1

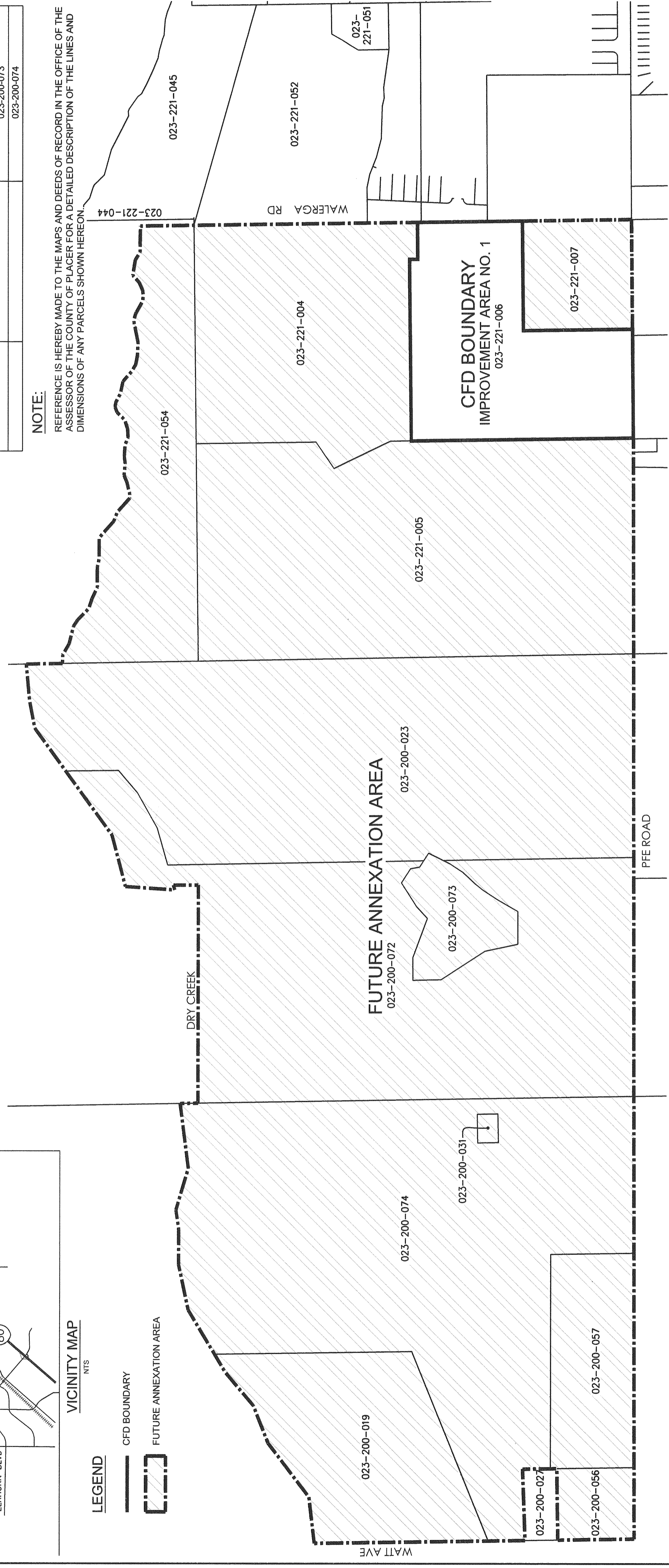
PROPOSED BOUNDARIES
AND FUTURE ANNEXATION AREA OF
COUNTY OF PLACER
COMMUNITY FACILITIES DISTRICT NO. 2017-1
(RIOLO VINEYARD SPECIFIC PLAN)
COUNTY OF PLACER, STATE OF CALIFORNIA
A PORTION OF SECTION 12, T10N., R5E., AND SECTION 7, T10N., R6E., MDM



CFD BOUNDARY	IMPROVEMENT AREA NO. 1	APN'S	FUTURE ANNEXATION AREA
023-221-006	023-221-006	023-221-004	023-221-004
		023-221-005	023-221-005
		023-221-007	023-221-007
		023-221-054	023-221-054
		023-200-019	023-200-019
		023-200-023	023-200-023
		023-200-031	023-200-031
		023-200-056	023-200-056
		023-200-057	023-200-057
		023-200-072	023-200-072
		023-200-073	023-200-073
		023-200-074	023-200-074

NOTE:

REFERENCE IS HEREBY MADE TO THE MAPS AND DEEDS OF RECORD IN THE OFFICE OF THE ASSESSOR OF THE COUNTY OF PLACER FOR A DETAILED DESCRIPTION OF THE LINES AND DIMENSIONS OF ANY PARCELS SHOWN HEREON.



CLERK'S MAP FILING STATEMENT
FILED IN THE OFFICE OF THE CLERK OF THE BOARD OF SUPERVISORS OF THE COUNTY OF PLACER THIS 5th DAY OF September, 2017

[Signature]
CLERK

CLERK'S MAP CERTIFICATE
I HEREBY CERTIFY THAT THE WITHIN MAP SHOWING PROPOSED BOUNDARIES AND FUTURE ANNEXATION AREA OF COUNTY OF PLACER COMMUNITY FACILITIES DISTRICT NO. 2017-1 (RIOLO VINEYARD SPECIFIC PLAN), COUNTY OF PLACER, STATE OF CALIFORNIA, WAS PRELIMINARILY APPROVED BY THE BOARD OF SUPERVISORS OF THE COUNTY OF PLACER, AT A MEETING THEREOF, HELD ON THE 5th DAY OF September, 2017, BY ITS RESOLUTION NO. _____

[Signature]
CLERK

RECORDER'S STATEMENT
FILED THIS 13th DAY OF September, 2017, AT THE HOUR OF 1:58 O'CLOCK P.M., IN BOOK 3 OF MAPS OF ASSESSMENT AND COMMUNITY FACILITIES DISTRICTS AT PAGE 7b IN THE OFFICE OF THE COUNTY RECORDER IN THE COUNTY OF PLACER, STATE OF CALIFORNIA.
FEE \$8.00
FILE NO. 2017-0070911

RYAN RONCO
PLACER COUNTY RECORDER
[Signature]
DEPUTY

KING ENGINEERING INC.
200 Auburn Folsom Road, Ste. 201
Auburn, California 95603
T: (530) 272-6328
E: info@King-Engineering-inc.com
Land Planning • Civil Engineering • Construction Support