



PLACER, County Recorder
 JIM MCCAULEY
 DOC- 2013-0115109-00

RECORDING REQUESTED BY:

Placer County Office of
 Emergency Services

JOURNAL
 TUESDAY, DEC 17, 2013 15:41:16
 MIC \$3.00 | AUT \$0.00 | SBS \$0.00
 ERD \$0.00 | RED \$0.00 | MAP \$5.00
 ADD \$0.00

Ttl Pd \$8.00 Rcpt # 02327402
 CLK46MLFJ1/SM/1-1

TYPE OF MAP: Community Facilities District Map

BOOK: 3 PAGE: 69-1

NAME: Sunset Industrial Area Services Boundaries
 Boundaries of Initial Community Facility District No. 2012-1

NO. OF SHEETS: 1

Sunset Industrial Area Services
 Boundaries of Future Annexation Area of
 Community Facility District No. 2012-1

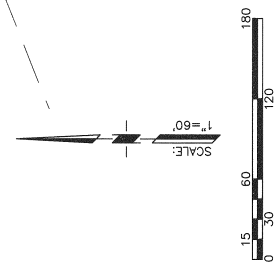
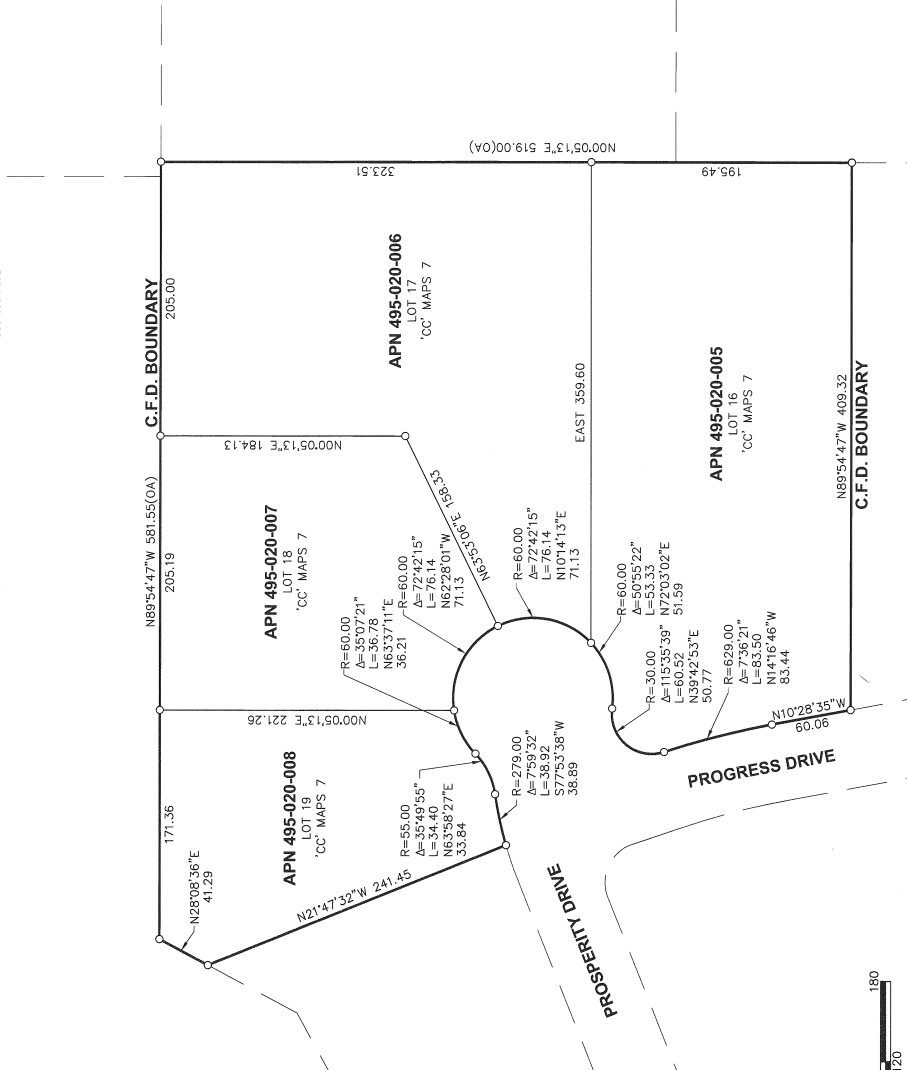
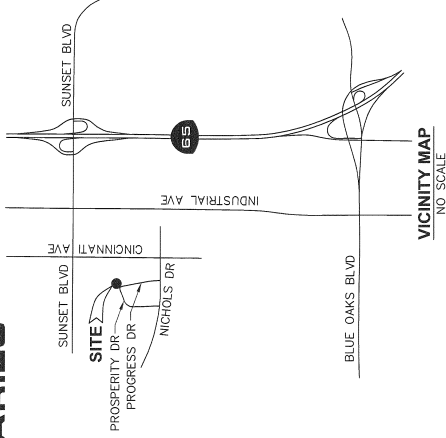
12/17/2013, 2013-0115107 Book 3 Page 69

BOUNDARIES OF INITIAL COMMUNITY FACILITIES DISTRICT NO. 2012-1 SUNSET INDUSTRIAL AREA SERVICES BOUNDARIES
PLACER COUNTY, CALIFORNIA

NOTE
THIS COMMUNITY FACILITIES DISTRICT BOUNDARY IS A PORTION OF THE FUTURE COMMUNITY FACILITIES DISTRICT NO. 2012-1 SUNSET INDUSTRIAL AREA SERVICES FILED IN BOOK 3 OF COMMUNITY FACILITIES DISTRICTS, AT PAGE 69, COUNTY OF PLACER.

SECTION 9, T.11 N., R.6 E., M.D.M.
SCALE: 1"=60' NOVEMBER 11, 2013

**ANDREGG
GEOMATICS**
800-400-7072



CLERK'S MAP CERTIFICATE

I HEREBY CERTIFY THAT THE WITHIN MAP SHOWING THE BOUNDARIES OF COMMUNITY FACILITIES DISTRICT NO. 2012-1 (SUNSET INDUSTRIAL AREA SERVICES) WAS PREPARED BY ANDREGG GEOMATICS, A PROFESSIONAL SURVEYING AND MAPPING FIRM, AND WAS FILED WITH THE COUNTY BOARD OF SUPERVISORS AT A REGULAR MEETING THEREOF, HELD ON THE 6TH DAY OF NOVEMBER, 2012, BY THIS RESOLUTION NO. 2012-260.

Ann Holman
ANN HOLMAN
PLACER COUNTY CLERK-OF-THE-BOARD
COUNTY OF PLACER
STATE OF CALIFORNIA

CLERK'S MAP FILING STATEMENT

FILED IN THE OFFICE OF THE CLERK OF THE BOARD OF SUPERVISORS OF THE COUNTY OF PLACER, THIS 12th DAY OF December, 2013.

Ann Holman
ANN HOLMAN
PLACER COUNTY CLERK-OF-THE-BOARD
COUNTY OF PLACER
STATE OF CALIFORNIA

RECORDER'S STATEMENT

FILED THIS 17th DAY OF December, 2013 AT 15:41 P.M. IN BOOK 3 OF COMMUNITY FACILITIES DISTRICTS, AT PAGE 69-1, IN THE OFFICE OF THE COUNTY RECORDER IN THE COUNTY OF PLACER, STATE OF CALIFORNIA.

FILE NO: 2013-0115109 BY: *Jim McCauley*
JIM MCCAULEY
PLACER COUNTY RECORDER
DEPUTY