

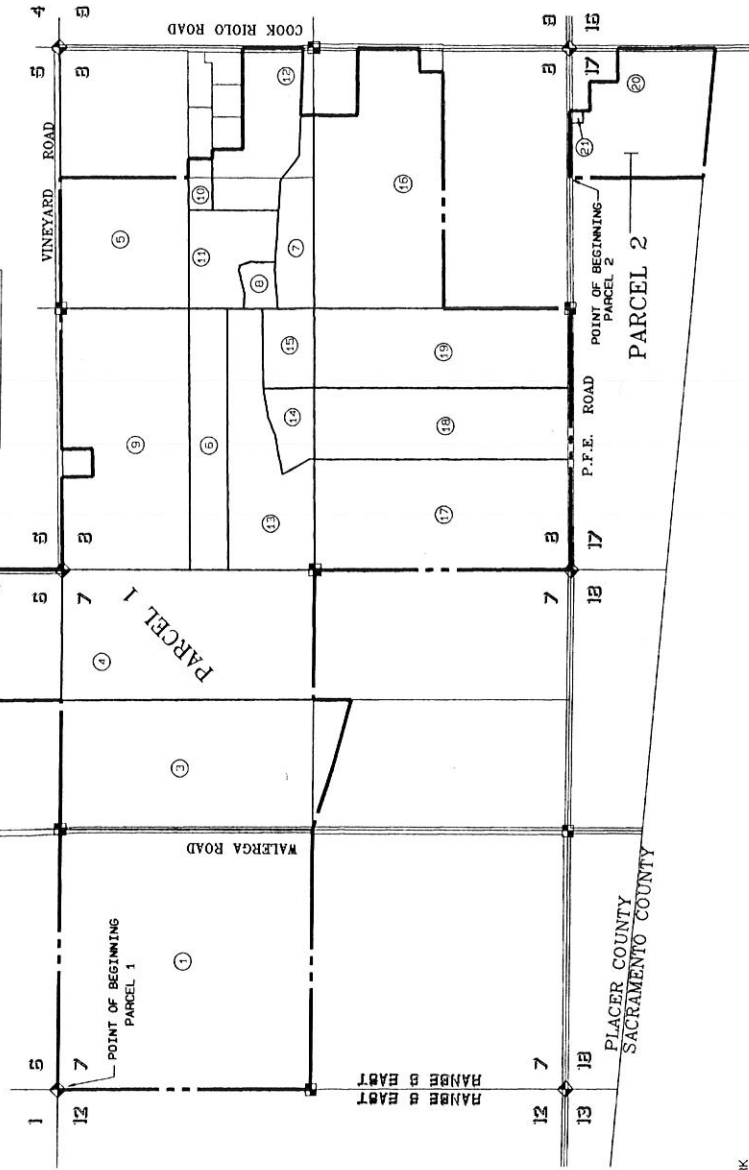
AMENDED MAP OF
THE PROPOSED BOUNDARIES OF
COMMUNITY FACILITIES DISTRICT NO. 1993-1
(DRY CREEK - WEST PLACER)
COUNTY OF PLACER STATE OF CALIFORNIA
JANUARY, 1994 SCALE: 1"=800'
SHEET 1 OF 1 SHEET

LEGEND:

DISTRICT BOUNDARY - - - - -

INDEX TO PLACER COUNTY
ASSESSOR PARCEL NUMBERS

1	23-250-29
2	23-250-37
3	23-250-45
4	23-250-47
5	23-240-02
6	23-240-12
7	23-240-18
8	23-240-44
9	23-240-29
10	23-240-35
11	23-240-40
12	23-240-41
13	23-240-42
14	23-240-43
15	23-250-08
16	23-250-41
17	23-250-42
18	23-250-43
19	23-250-24
20	23-260-23



CLERK'S MAP FILING STATEMENT:
FILED IN THE OFFICE OF THE CLERK OF THE BOARD OF SUPERVISORS
COUNTY OF PLACER, THIS 15 DAY OF February, 1994.

Georgia Hulse
CLERK OF THE BOARD OF SUPERVISORS
COUNTY OF PLACER

CLERK'S MAP CERTIFICATE:
I, CLERK OF THE BOARD OF SUPERVISORS, AM SHOWING PROPOSED
BOUNDARIES OF DRY CREEK - WEST PLACER COMMUNITY FACILITIES
DISTRICT NO. 1, PLACER COUNTY, CALIFORNIA, WAS APPROVED BY
THE BOARD OF SUPERVISORS AT A REGULAR MEETING THEREOF, HELD
ON THE DAY OF February, 1994, BY
ITS RESOLUTION NO. 94-014321.

Deanna Hulse
CLERK OF THE BOARD OF SUPERVISORS
COUNTY OF PLACER

COUNTY RECORDER'S FILING STATEMENT:
THIS MAP WAS FILED IN BOOK 3 OF MAPS OF ASSES-
SORS' PARCELS AND COMMUNITY FACILITIES DISTRICTS AT PAGE 1-1
IN THE OFFICE OF THE COUNTY RECORDER IN THE COUNTY OF
PLACER, STATE OF CALIFORNIA.

JIM McCALLEY
COUNTY RECORDER OF THE
COUNTY OF PLACER
BY *E. A. James*
DEPUTY

FILED 94-014321
FEE \$800

NOTE:
THIS MAP AMENDS THE "PROPOSED BOUNDARIES OF COMMUNITY FACILITIES
DISTRICTS," AT PAGE 1.

The Spink Corporation 86583
2550 VINEYARD LANE SACRAMENTO, CALIF. 95833
PHONE: (916) 925-5550 FAX: (916) 924-9224

UNPUBLISHED WORK
© 1994
THE SPINK CORPORATION