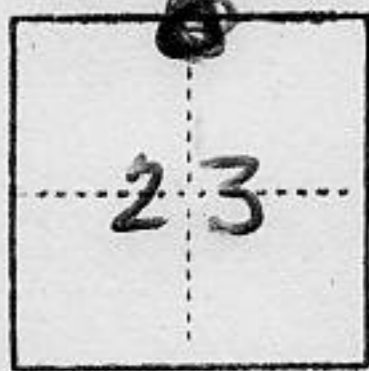


CORNER RECORD

COUNTY OF Placer T. 13 N R. 12 E MD MERIDIAN CALIFORNIA

CORNER TYPE: GOV'T. CORNER MEANDER RANCHO CONTROL OTHER

CORNER IDENTIFICATION - DATE OF VISIT Jan 19 78



Corner falls on Nly edge of logged area 20' north of small road.

CORNER - LEFT AS FOUND FOUND AND TAGGED REESTABLISHED OBLITERATED CORNER REBUILT

PHYSICAL DESCRIPTION OF CORNER FOUND, EVIDENCE AND METHOD USED TO IDENTIFY OR REESTABLISH

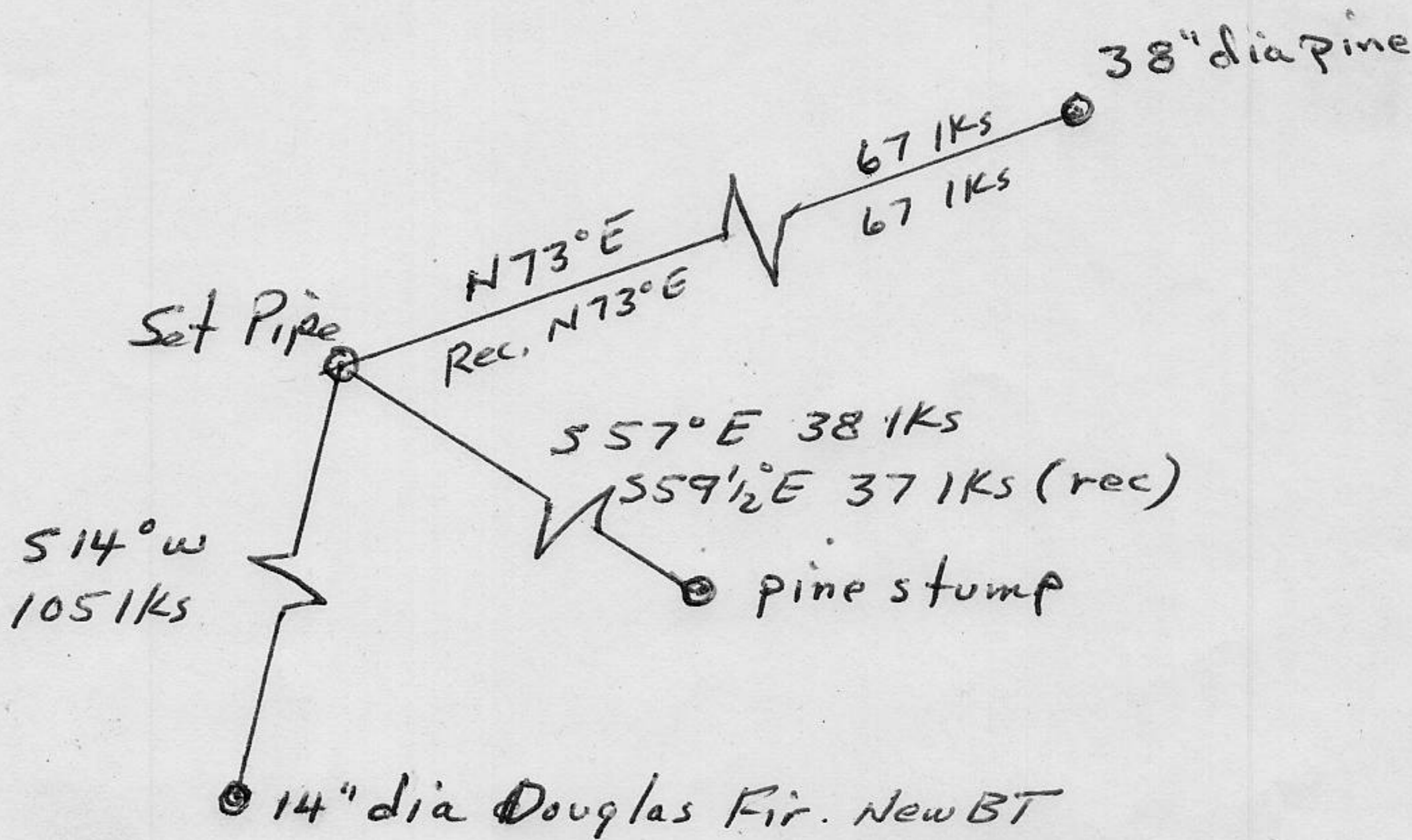
Corner monument gone -
Record- Orig. B.T. 18" yellow pine 559 1/2° E 37 Iks. - find stump
" " " 26" yellow pine N73° E 67 Iks. - find.

PHYSICAL DESCRIPTION OF MONUMENTS REBUILT OR PERPETUATED

Set 2" capped pipe and built rock mound - marked for corner
& orig B.T. - pine stump bears 557° E 38 Iks. & stamped LS3026 1978
& orig B.T. - 38" dia pine bears N73° E 67 Iks
New BT - scribed 14" dia. Doug. fir - bears S14° W 105 Iks

CALIFORNIA COORDINATE SYSTEM ORDER: FIRST SECOND THIRD
STATIONS USED: NGS (USC & GS) STATE COUNTY OTHER STATION _____ STATION _____
ZONE _____ ELEVATION _____ NORTHINGS (Y) _____ EASTINGS (X) _____

SKETCH: (Include reference tie or witness points, remarks and topo of area)



Book 1, Corner Records, Page 42

SURVEYOR'S CERTIFICATE

THIS CORNER RECORD WAS PREPARED BY ME OR UNDER MY DIRECTION IN CONFORMANCE WITH THE LAND SURVEYORS ACT ON May 18 19 78 L. MILLER

SIGNED: J. L. Miller No. LS. 3026
L.S. or R.C.E. No. LS 3026

SEAL

COUNTY SURVEYOR'S CERTIFICATE

THE CORNER RECORD WAS RECEIVED 5/26 19 78
AND EXAMINED AND FILED 5/26 19 78

BY: John J. Shattwell
TITLE: COUNTY SURVEYOR

DOCUMENT No. _____

STATEMENT ON BACK OF SHEET

YES NO