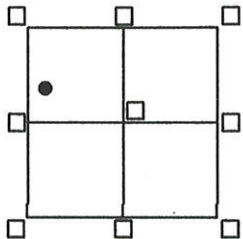


# CORNER RECORD

Agency Index BK 22, PG 77  
 Document Number 20190071

City of UNINCORPORATED AREA County of PLACER, California

Brief Legal Description LOT 123 CARNELIAN HEIGHTS UNIT #3  
BOOK "H" OF MAPS PAGE 87 P.C.D.R.



**CORNER TYPE**  
 SEC.28 Government Corner  Control   
 T.16N. Meander  Property   
 R.17E. Rancho  Other   
 M.D.M. Date of Survey 9/24/19

**COORDINATES (Optional)**  
 N. \_\_\_\_\_ E. \_\_\_\_\_  
 Elevation \_\_\_\_\_  
 Units  Metric  U.S. Survey Foot  
 Horizontal Datum \_\_\_\_\_  
 Zone \_\_\_\_\_ Epoch Date \_\_\_\_\_  
 Vertical Datum \_\_\_\_\_  
 Complies with Public Resources Code 8801-8891  
 Complies with Public Resources Code 8890-8902

PLS Act Ref:  8765(d)  8771  8773  Other:

Corner/Monument:  Left as found  Established  Rebuilt  Pre-Construction  
 Found and tagged  Reestablished  Referenced  Post-Construction

Narrative of corner identified and monuments as found, set, reset, replaced, or moved:

See sheet #2 for description(s):

● = FOUND 1/2" REBAR W/ COPPER COLLAR L.S. 2515 PER "H"/MAPS/87 P.C.D.R.

● = FOUND 3/4" REBAR W/ COPPER COLLAR L.S. 2515 PER "H"/MAPS/87 P.C.D.R.

● = FOUND 5/8" REBAR W/ PLASTIC CAP L.S. 6460, NO RECORD

⊙ = SET BATHEY MONUMENT (T-BAR) W/ NAIL & TAG STAMPED P.L.S. 8628

JN:19107

### SURVEYOR'S STATEMENT

This Corner Record was prepared by me or under my direction in conformance with the Professional Land Surveyor's Act on SEPTEMBER 25, 2019

Signed [Signature] P.L.S. or R.C.E. No. 8628  
lic. exp. 12/31/19



### COUNTY SURVEYOR'S STATEMENT

This Corner Record was received NOVEMBER 4, 2019

and examined and filed MAY 20, 2020

Signed [Signature] P.L.S. or R.C.E. No. 8373

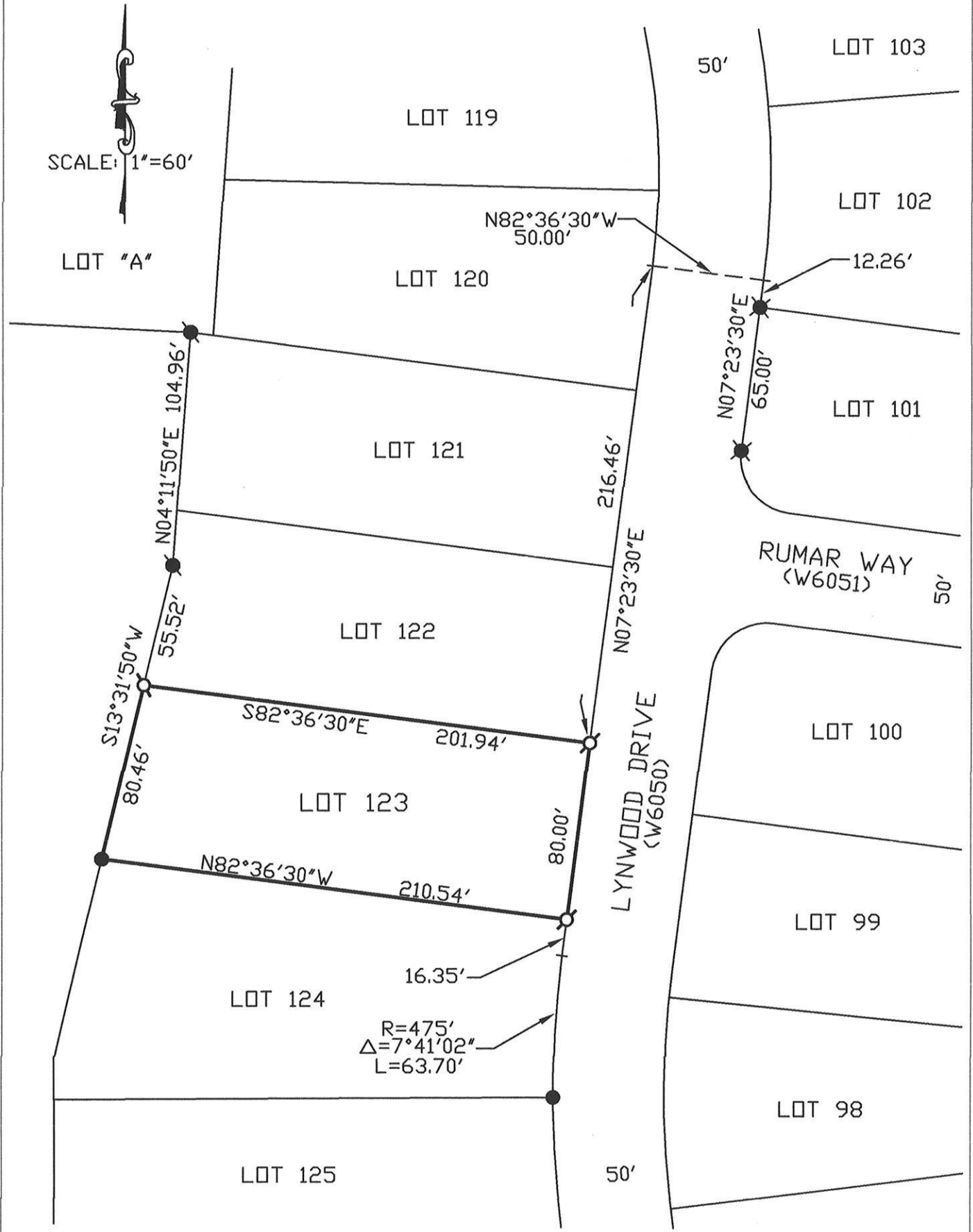
Title Deputy Co Surveyor

County Surveyor's Comment \_\_\_\_\_



BOOK 22 OF CORNER RECORDS PAGE 77

NOTE: THE BEARINGS AND DISTANCES SHOWN ARE RECORD PER "H"/MAPS/87 P.C.D.R. NO MATERIAL DISCREPANCIES WITH RECORD INFORMATION WERE FOUND.



BOOK 22 OF CORNER RECORDS PAGE 77