

CORNER RECORD

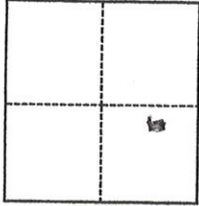
Agency Index BK 22, PG 79

Document Number 20090071

City of _____ County of PLACER, California

Brief Legal Description PARCEL 3 OF 24 PM 151, ORPC. SEC. 9, T.14, R.9 E. M.D.M

Sec. 9, T.14 N. R. 9 E.



CORNER TYPE

- Government Corner
- Meander
- Rancho
- Control
- Property
- Other

Date of Survey August 4, 2009

COORDINATES (Optional)

N. _____ E. _____

Elevation _____

Units Metric U.S. Survey Foot

Horizontal Datum _____

Zone _____ Epoch Date _____

Vertical Datum _____

Complies with Public Resources Code §§8801-8819

Complies with Public Resources Code §§8890-8902

PLS Act Ref.: 8765(d) 8771 8773 Other:

Corner/Monument: Left as found Established Rebuilt Pre-Construction

Found and tagged Reestablished Referenced Post-Construction

Narrative of corner identified and monument as found, set, reset, replaced, or removed:

See sheet #2 for description(s):

USED FOUND ORIGINAL MONUMENTS AND RECORD DIMENSIONS PER 24 PM 151 TO RE-ESTABLISH N'LY CORNER OF PARCEL 3 AS SHOWN ON PAGE 2.

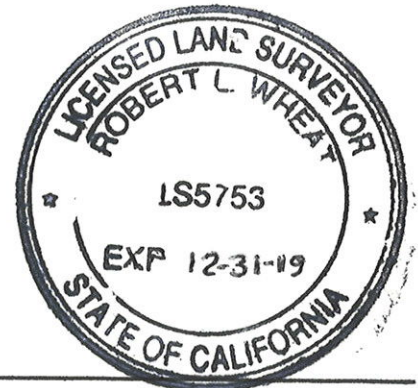
SET 3/8 REBAR TAGGED "L.S. 5753" AS SHOWN ON PAGE 2.

SURVEYOR'S STATEMENT

This Corner Record was prepared by me or under my direction in conformance with

the Professional Land Surveyors' Act on August 10, 2009

Signed Robert Wheat P.L.S. or R.C.E. No. 5753



COUNTY SURVEYOR'S STATEMENT

This Corner Record was received August 19, 2009 October 29, 2019

and examined and filed MAY 20, 2020

Signed By/Bardakian P.L.S. or R.C.E. No. 8373

Title Deputy Co Surveyor

County Surveyor's Comment

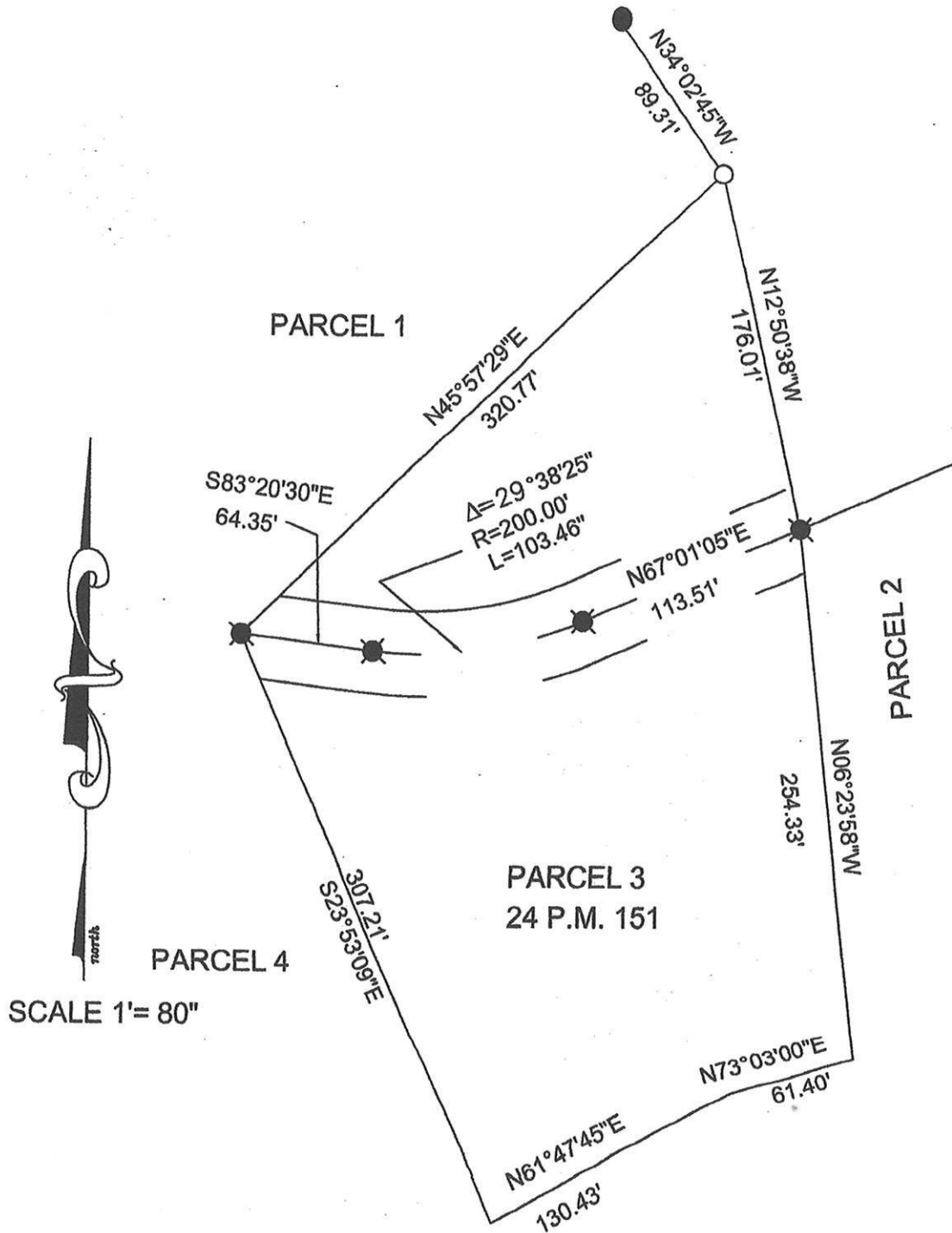


BOOK 22 OF CORNER RECORDS PAGE 79

LEGEND

- FOUND 3/4" REBAR W/ALUM.CAP L.S.4598 PER 24 PM 151
- ✖ FOUND RAILROAD SPIKE PER 24 PM 151 UNABLE TO READ NUMBER
- SET 3/8" REBAR WITH TAG L.S.5753 PER THIS SURVEY

NOTE ALL BEARING AND DISTANCES ARE RECORD AND MEASURED



WHEAT LAND SURVEYING
 316 GARDEN CREEK PLACE, DANVILLE, CA 94526
 925-525-8521

JN 6261

BOOK 22 OF CORNER RECORDS PAGE 79