

CORNER RECORD

Agency Index

Bk 22 Pg 45

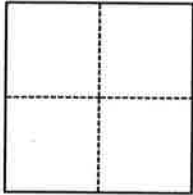
Document Number 20200018

City of Rocklin County of Placer, California

Brief Legal Description Centerline intersection of Charter Road & Camden Road, R Maps 8

CORNER TYPE

COORDINATES (Optional)



- Government Corner
- Meander
- Rancho
- Control
- Property
- Other

N. _____ E. _____

Elevation _____

Units Metric U.S. Survey Foot

Horizontal Datum _____

Zone _____ Epoch Date _____

Vertical Datum _____

Complies with Public Resources Code §§8801-8819

Complies with Public Resources Code §§8890-8902

Date of Survey February 27, 2020

SEC 12, T.11N., R.6.E.

PLS Act Ref.: 8765(d) 8771 8773 Other:

Corner/Monument: Left as found Established Rebuilt Pre-Construction
 Found and tagged Reestablished Referenced Post-Construction

Narrative of corner identified and monument as found, set, reset, replaced, or removed:

See sheet #2 for description(s):

Set reference points to found monument per R Maps 8 prior to construction as shown on sheet 2.

SURVEYOR'S STATEMENT

This Corner Record was prepared by me or under my direction in conformance with

the Professional Land Surveyors' Act on March 9, 2020

Signed [Signature] P.L.S. or R.C.E. No. 6947



COUNTY SURVEYOR'S STATEMENT

This Corner Record was received

2020
MARCH 12, 2019

and examined and filed

MAY 21, 2020

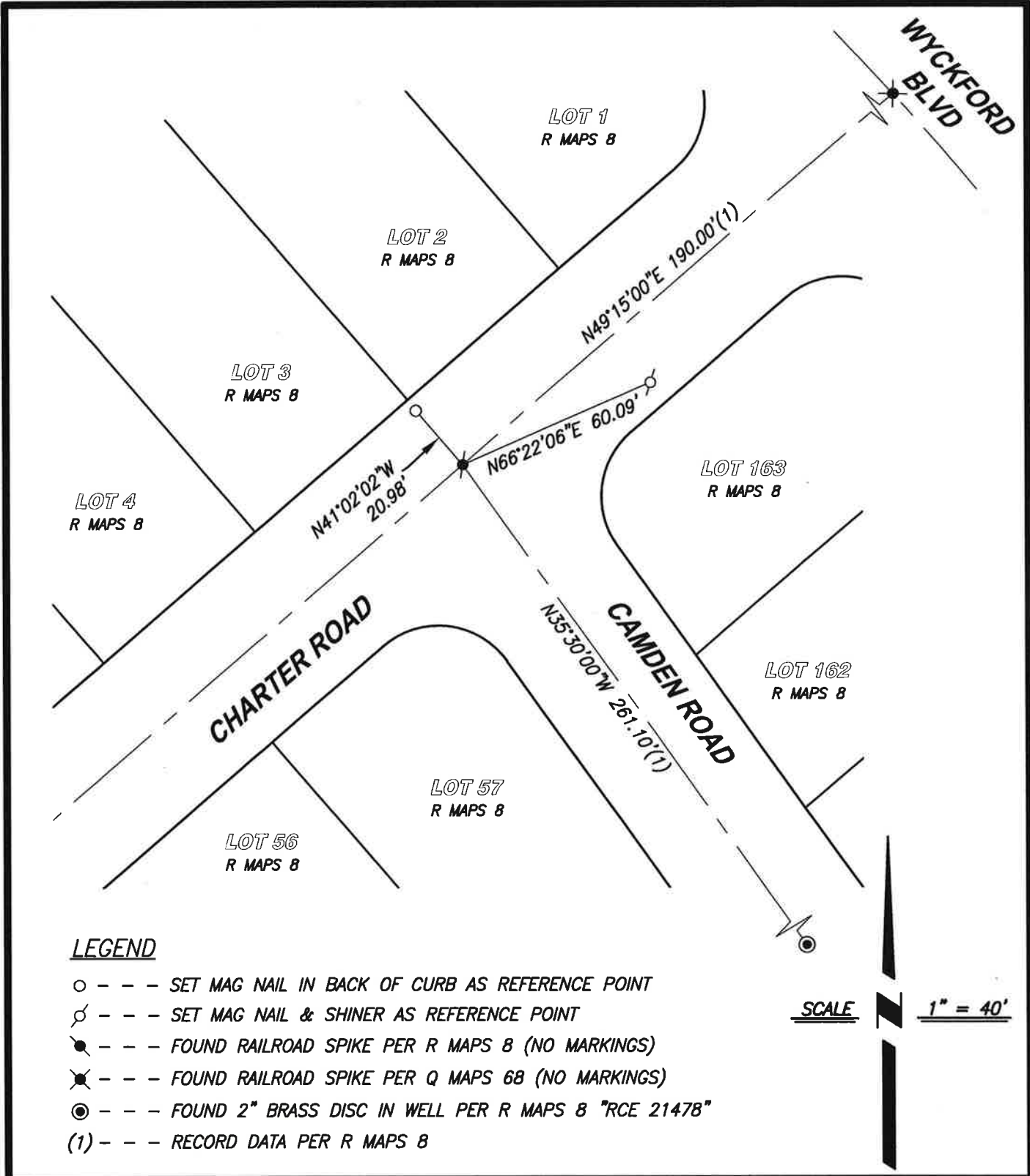
Signed [Signature] P.L.S. or R.C.E. No. 8373

Title Deputy Co. Surveyor

County Surveyor's Comment



Book 22 of Corner Records Page 45

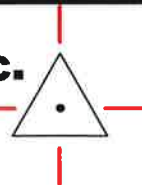


Book 22 of Corner Records Page 45

CenterPoint Engineering, Inc.

Civil Engineering & Land Surveying

1217 Pleasant Grove Blvd., Suite 130 · Roseville, CA · 95678
 Phone: 916-773-4006 Fax: 916-773-4498



DRAWN BY: BB

CHECKED BY: MH

SHEET: 2 OF 2

SCALE: 1" = 40'

DATE: 3-9-2020