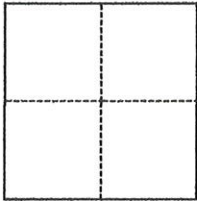


# CORNER RECORD

Agency Index Bk 22 Pg 46  
Document Number 20200023

City of Rocklin County of Placer, California  
Brief Legal Description Centerline of Baltic Circle (formerly Mountain View Drive), L Maps 86

### CORNER TYPE



- Government Corner
- Meander
- Rancho
- Control
- Property
- Other

Date of Survey March 30, 2020

SEC 12, T. 11 N., R. 6 E.

### COORDINATES (Optional)

N. \_\_\_\_\_ E. \_\_\_\_\_  
 Elevation \_\_\_\_\_  
 Units  Metric  U.S. Survey Foot  
 Horizontal Datum \_\_\_\_\_  
 Zone \_\_\_\_\_ Epoch Date \_\_\_\_\_  
 Vertical Datum \_\_\_\_\_  
 Complies with Public Resources Code §§8801-8819  
 Complies with Public Resources Code §§8890-8902

PLS Act Ref.:  8765(d)  8771  8773  Other:  
 Corner/Monument:  Left as found  Established  Rebuilt  Pre-Construction  
 Found and tagged  Reestablished  Referenced  Post-Construction

Narrative of corner identified and monument as found, set, reset, replaced, or removed:

See sheet #2 for description(s):

Set reference points to found monument per L Maps 86 prior to construction as shown on sheet 2.

### SURVEYOR'S STATEMENT

This Corner Record was prepared by me or under my direction in conformance with  
 the Professional Land Surveyors' Act on May 14, 2020  
 Signed [Signature] P.L.S. or R.C.E. No. 6947



### COUNTY SURVEYOR'S STATEMENT

This Corner Record was received MAY 18, 2020  
 and examined and filed MAY 10, 2020  
 Signed [Signature] P.L.S. or R.C.E. No. 8373  
 Title Deputy Co. Surveyor  
 County Surveyor's Comment \_\_\_\_\_

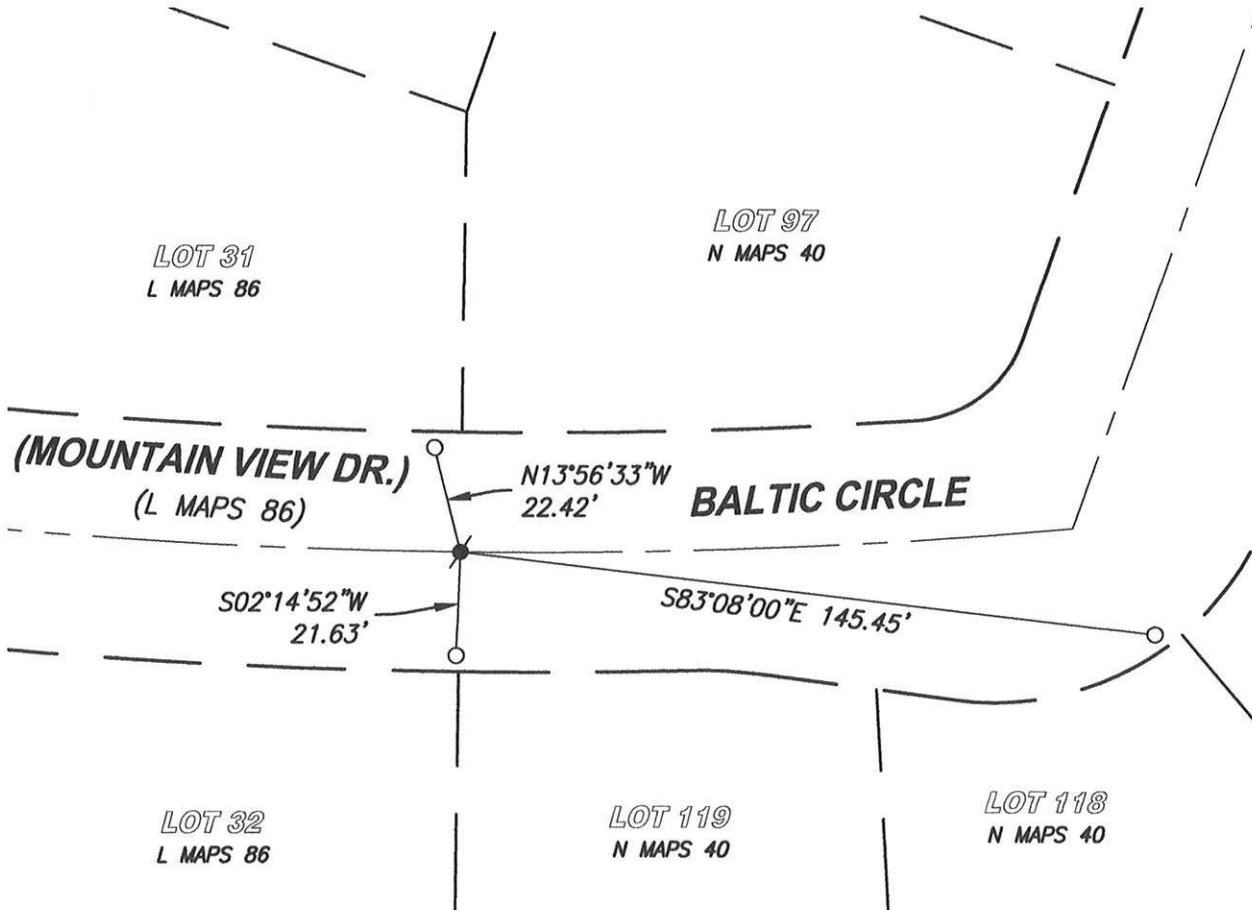


Box 22 of Corner Records Page 46

**NOTES:**

THIS CORNER RECORD REPRESENTS THE AS FOUND LOCATION OF THE MONUMENTS SHOWN HEREON, NO SURVEY HAS BEEN MADE OF SAID MONUMENTS IN RELATIONSHIP TO REFERENCED RECORD MAPS.

THE BASIS OF BEARINGS OF THIS DRAWING IS ASSUMED NORTH.



SCALE  
1" = 40'

**LEGEND**

- - - - SET CUT '+' IN SIDEWALK
- ⊙ - - - FOUND RAILROAD SPIKE, NO MARKINGS PER L MAPS 86

Book 12 of Governer Records Page 410

**CenterPoint Engineering, Inc.**

Civil Engineering & Land Surveying

1217 Pleasant Grove Blvd. Suite 130 · Roseville, CA · 95678  
Phone: 916-773-4006 Fax: 916-773-4498



DRAWN BY: BB

CHECKED BY: MH

SHEET: 2 OF 2

SCALE: 1" = 40'

DATE: 5-14-2020