

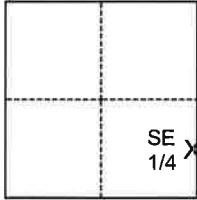
CORNER RECORD

Agency Index BK 22 PG 53
 Document Number 20200020

City of Lincoln County of Placer, California
 Brief Legal Description Centerline of Groveland-Stanmark Intersection Per Z MAPS 69

CORNER TYPE

COORDINATES (Optional)



- Government Corner Control
 Meander Property
 Rancho Other

N. _____ E. _____
 Elevation _____
 Units Metric U.S. Survey Foot
 Horizontal Datum _____
 Zone _____ Epoch Date _____
 Vertical Datum _____
 Complies with Public Resources Code §§8801-8819
 Complies with Public Resources Code §§8890-8902

Date of Survey January 24, 2020

Sec. 21, T.12N. R.6E. M.D.M.

- PLS Act Ref.: 8765(d) 8771 8773 Other:
 Corner/
 Monument: Left as found Established Rebuilt Pre-Construction
 Found and tagged Reestablished Referenced Post-Construction

Narrative of corner identified and monument as found, set, reset, replaced, or removed:

See sheet #2 for description(s):

- Reestablished location per Corner Record 20200011 per found reference points. Set a copperweld monument with punch in monument well marked "L.S. 8928". See page 2 for additional information.

SURVEYOR'S STATEMENT

This Corner Record was prepared by me or under my direction in conformance with the Professional Land Surveyors' Act on April 11, 2020
 Signed [Signature] P.L.S. or R.C.E. No. 8928

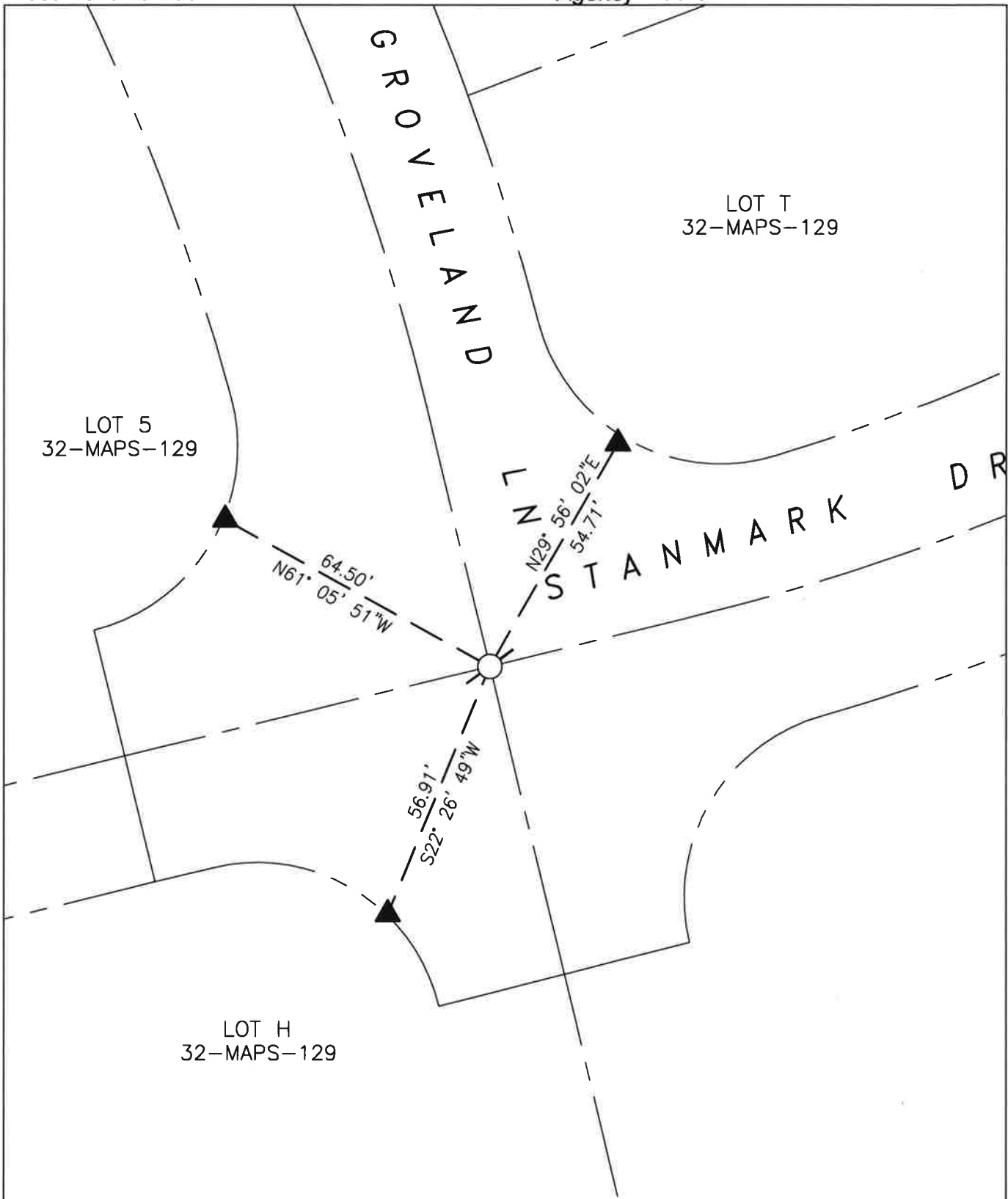


COUNTY SURVEYOR'S STATEMENT

This Corner Record was received MAY 11, 2020
 and examined and filed MAY 11, 2020
 Signed [Signature] P.L.S. or R.C.E. No. 8373
 Title Deputy Co. Surveyor
 County Surveyor's Comment _____



BOOK 22 OF CORNER RECORDS PAGE 53



BOOK 22 OF CORNER RECORDS PAGE 53

NOTE:

THIS CORNER RECORD REPRESENTS THE AS FOUND LOCATION OF THE REFERENCE POINTS PER CR 20200011 SHOWN HEREON, NO SURVEY HAS BEEN MADE OF SAID REFERENCE POINTS IN RELATIONSHIP TO REFERENCED RECORD MAPS.



PLAN VIEW

SCALE: 1"=30'

LEGEND

-  SET COPPERWELD MONUMENT WITH PUNCH IN MONUMENT WELL MARKED "LS 8928"
-  FOUND MAG NAIL IN SIDEWALK PER CR 20200011