

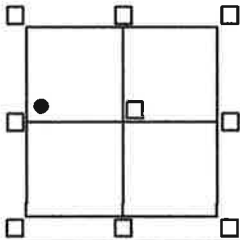
CORNER RECORD

Agency Index
Document Number

BK 22, PG 63
20190097

City of UNINCORPORATED AREA County of PLACER, California

Brief Legal Description LOT 75 MCKINNEY SHORES SUBDIVISION
BOOK 'G' OF MAPS PAGE 25 P.C.D.R.



SEC. 7
T.14N.
R.17E.
M.D.M.

CORNER TYPE

Government Corner Control
Meander Property
Rancho Other
Date of Survey 8/30/19

COORDINATES (Optional)

N. _____ E. _____
Elevation _____
Units Metric U.S. Survey Foot
Horizontal Datum _____
Zone _____ Epoch Date _____
Vertical Datum _____
 Complies with Public Resources Code 8801-8801
 Complies with Public Resources Code 8890-8902

PLS Act Ref: 8765(d) 8771 8773 Other:

Corner/Monument: Left as found Established Rebuilt Pre-Construction
 Found and tagged Reestablished Referenced Post-Construction

Narrative of corner identified and monuments as found, set, reset, replaced, or moved:

See sheet #2 for description(s):

● = FOUND 1/2" REBAR NO TAG PER "G"/MAPS/25 P.C.D.R.

● = FOUND 1/2" REBAR W/ PLASTIC CAP L.S. 5728, NO RECORD

● = FOUND 5/8" REBAR W/ PLASTIC CAP L.S. 3956, NO RECORD

○ = DIMENSION POINT ONLY

○ = SET BATHEY MONUMENT (T-BAR) W/ NAIL & TAG STAMPED P.L.S. 8628

JN:19089

SURVEYOR'S STATEMENT

This Corner Record was prepared by me or under my direction in conformance with the Professional Land Surveyor's Act on NOVEMBER 22, 2019

Signed [Signature] P.L.S. or R.C.E. No. 8628
LIC. EXP. 12/31/19



COUNTY SURVEYOR'S STATEMENT

This Corner Record was received DECEMBER 10, 2019

and examined and filed MARCH 2, 2020

Signed [Signature] P.L.S. or R.C.E. No. 8373

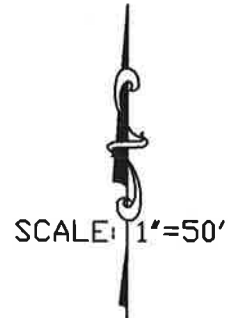
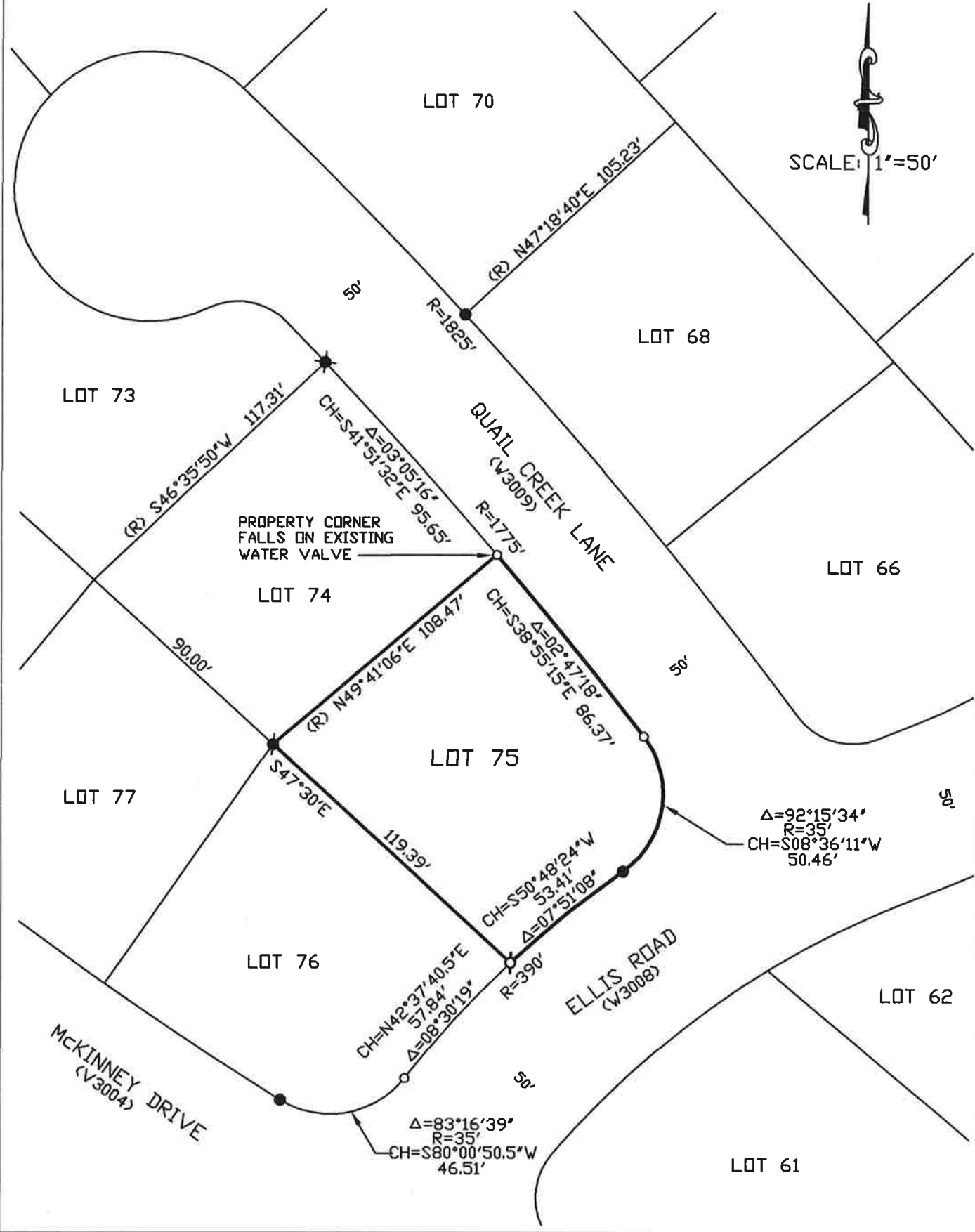
Title Deputy Co. Surveyor

County Surveyor's Comment _____



BOOK 22 OF CORNER RECORDS PAGE 63

NOTE: THE BEARINGS AND DISTANCES SHOWN ARE RECORD PER "G"/MAPS/25 P.C.D.R. NO MATERIAL DISCREPANCIES WITH RECORD INFORMATION WERE FOUND.



BOOK 22 OF CORNER RECORDS PAGE 03