

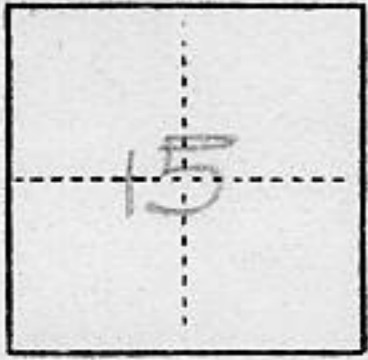
(For County Use Only)

CORNER RECORD

COUNTY OF Placer Corners of Christian Valley Park unit 2A T. 13N R. 8E MERIDIAN CALIFORNIA

CORNER TYPE: GOV'T. CORNER MEANDER RANCHO CONTROL OTHER

CORNER IDENTIFICATION — DATE OF VISIT _____ 19____



CORNER — LEFT AS FOUND FOUND AND TAGGED REESTABLISHED OBLITERATED CORNER REBUILT

PHYSICAL DESCRIPTION OF CORNER FOUND; EVIDENCE AND METHOD USED TO IDENTIFY OR REESTABLISH

Corners Lost.

PHYSICAL DESCRIPTION OF MONUMENTS REBUILT OR PERPETUATED

Set 3/4 inch rebar with copper sleeve marked LS 3062.

CALIFORNIA COORDINATE SYSTEM ORDER: FIRST SECOND THIRD
STATIONS USED: NGS (USC & GS) STATE COUNTY OTHER STATION _____ STATION _____
ZONE _____ ELEVATION _____ NORTHINGS (Y) _____ EASTINGS (X) _____

See attached map

(Fold)

SKETCH: (Include reference tie or witness points, remarks and topo of area)

See attached map.

SURVEYOR'S CERTIFICATE

THIS CORNER RECORD WAS PREPARED BY ME OR UNDER MY DIRECTION IN CONFORMANCE WITH THE LAND SURVEYORS ACT ON 4/14 1986

SIGNED: Emerson L. Smith

L.S. or R.C.E. No.: LS 3062



COUNTY SURVEYOR'S CERTIFICATE

THE CORNER RECORD WAS RECEIVED APR 15 1986 AND EXAMINED AND FILED APR 18 1986

BY: John R. [Signature]
TITLE: Deputy County Surveyor

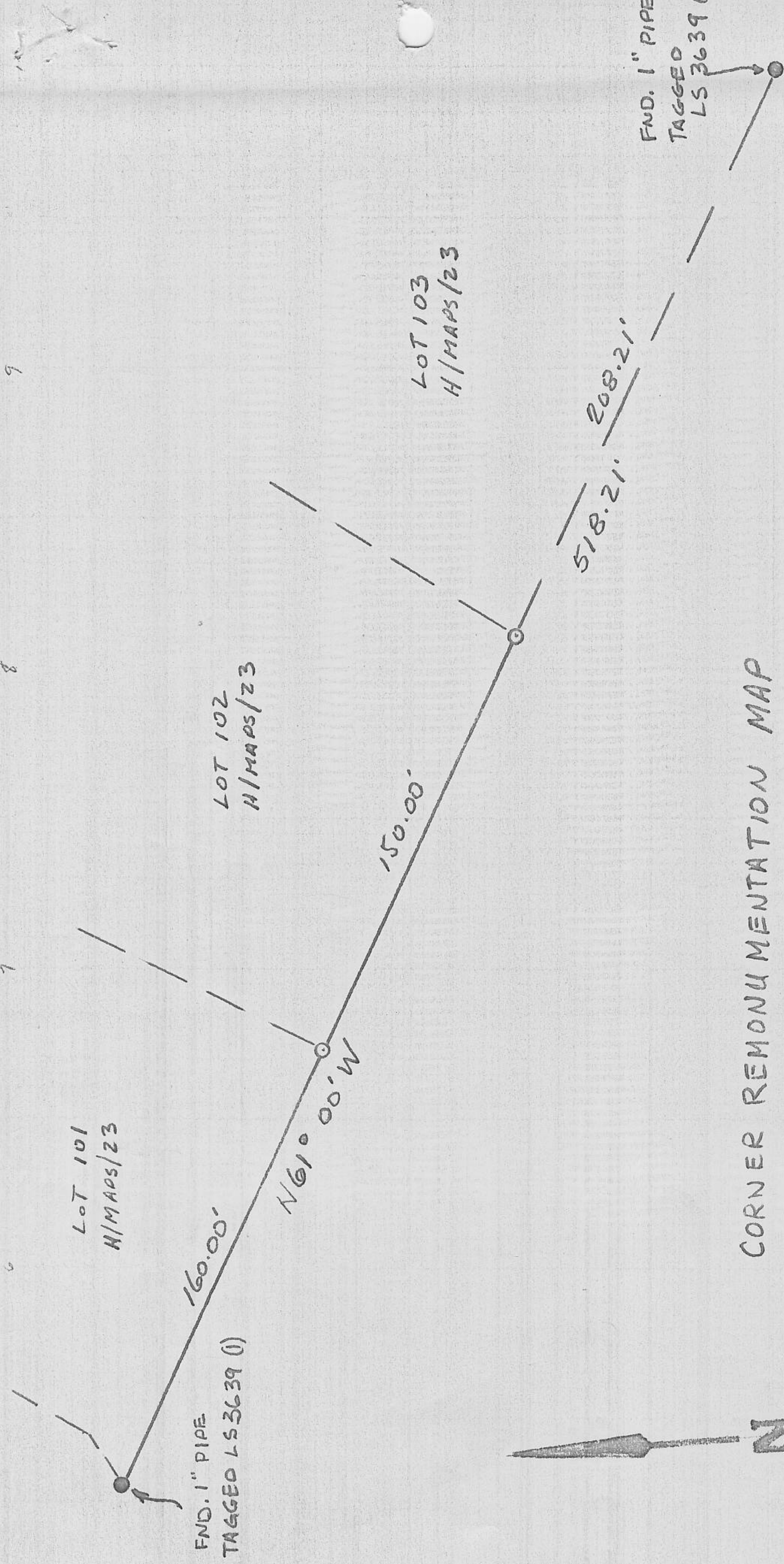
DOCUMENT No. _____

STATEMENT ON BACK OF SHEET

YES

NO

Book 1, Corner Records, Page 135



CORNER REMONUMENTATION MAP

SHOWING THE SOUTHERLY LINE OF LOTS 101, 102 & 103 OF CHRISTIAN VALLEY PARK UNIT No. 2A, AND THE REMONUMENTATION OF THE SOUTHERLY CORNERS OF LOT 102.

SCALE: 1" = 50'

EMERSON L. SMITH
LS 3062

APRIL 1986

(1) = 6/PM/127