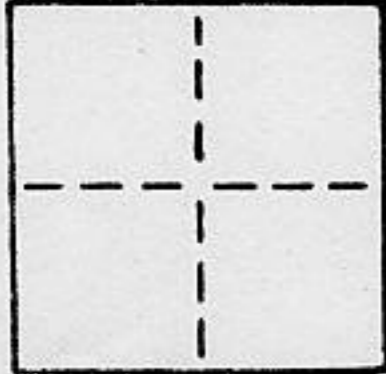


CORNER RECORD

COUNTY OF Placer T. 17N R. 14E Section 27 MERIDIAN BM CALIFORNIA

CORNER TYPE: GOVT. CORNER MEANDER RANCHO CONTROL OTHER MDM
CORNER IDENTIFICATION — DATE OF VISIT _____ 19____



CORNER — LEFT AS FOUND FOUND AND TAGGED REESTABLISHED OBLITERATED CORNER REBUILT

PHYSICAL DESCRIPTION OF CORNER FOUND; EVIDENCE AND METHOD USED TO IDENTIFY OR REESTABLISH

TRACT NO. 195
Serene Lakes unit # 546

PHYSICAL DESCRIPTION OF MONUMENTS REBUILT OR PERPETUATED

Set 5/8" Rebar with plastic cap stamped L.S. 5030
at Lot corner

CALIFORNIA COORDINATE SYSTEM ORDER: FIRST SECOND THIRD
STATIONS USED: NGS (USC & GS) STATE COUNTY OTHER STATION _____ STATION _____
ZONE _____ ELEVATION _____ NORTHINGS (Y) _____ EASTINGS (X) _____

SKETCH: (Include reference tie or witness points, remarks and topo of area)

See Atatched Map Dated May 1987
VARNEY LAND SURVEYS

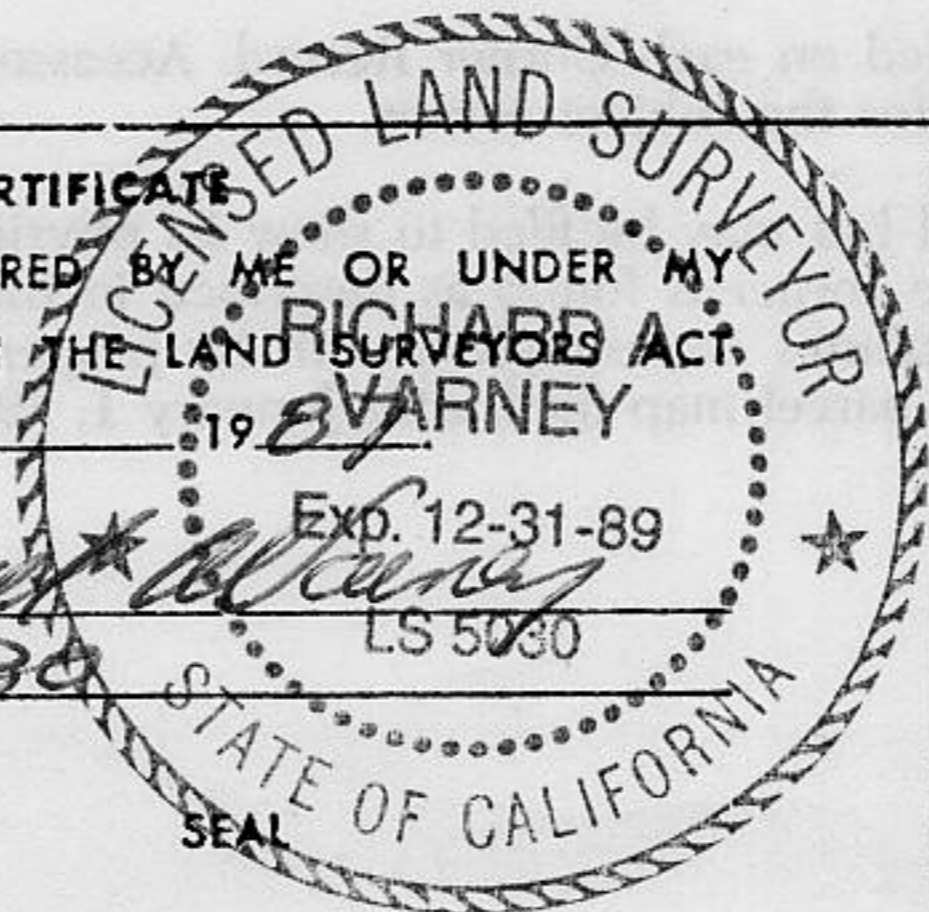
Book 1, CORNER RECORDS, PAGE 142

SURVEYOR'S CERTIFICATE

THIS CORNER RECORD WAS PREPARED BY ME OR UNDER MY DIRECTION IN CONFORMANCE WITH THE LAND SURVEYORS ACT. ON May 1987

SIGNED: Richard A. Varney

L.S. or R.C.E. No.: LS 5030



COUNTY SURVEYOR'S CERTIFICATE

THE CORNER RECORD WAS RECEIVED _____ 19____

AND EXAMINED AND FILED _____ 19____

BY: Brian J. McDaniel
TITLE: Deputy County Surveyor

DOCUMENT No. _____

STATEMENT ON BACK OF SHEET

YES NO

J BM 67

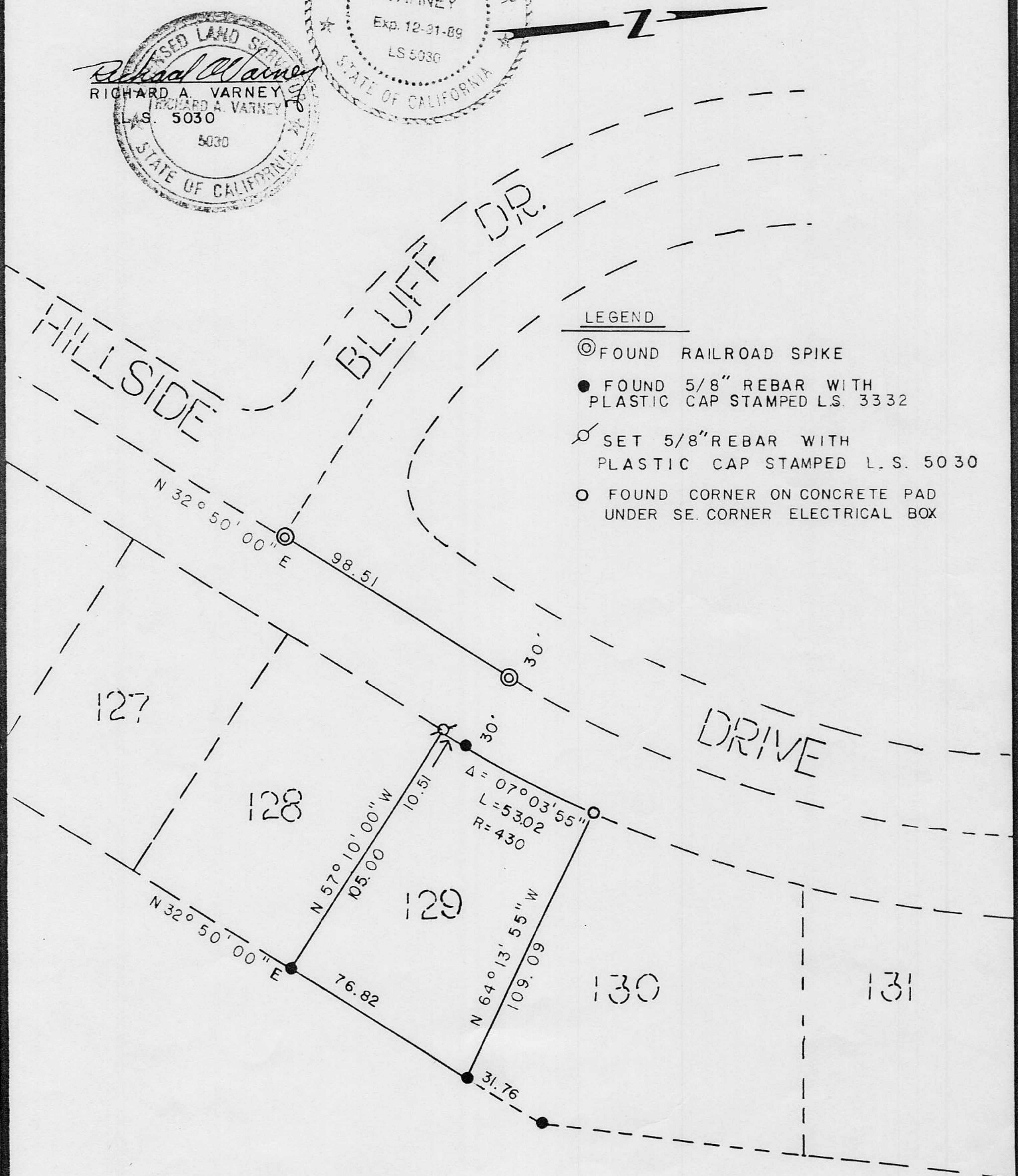
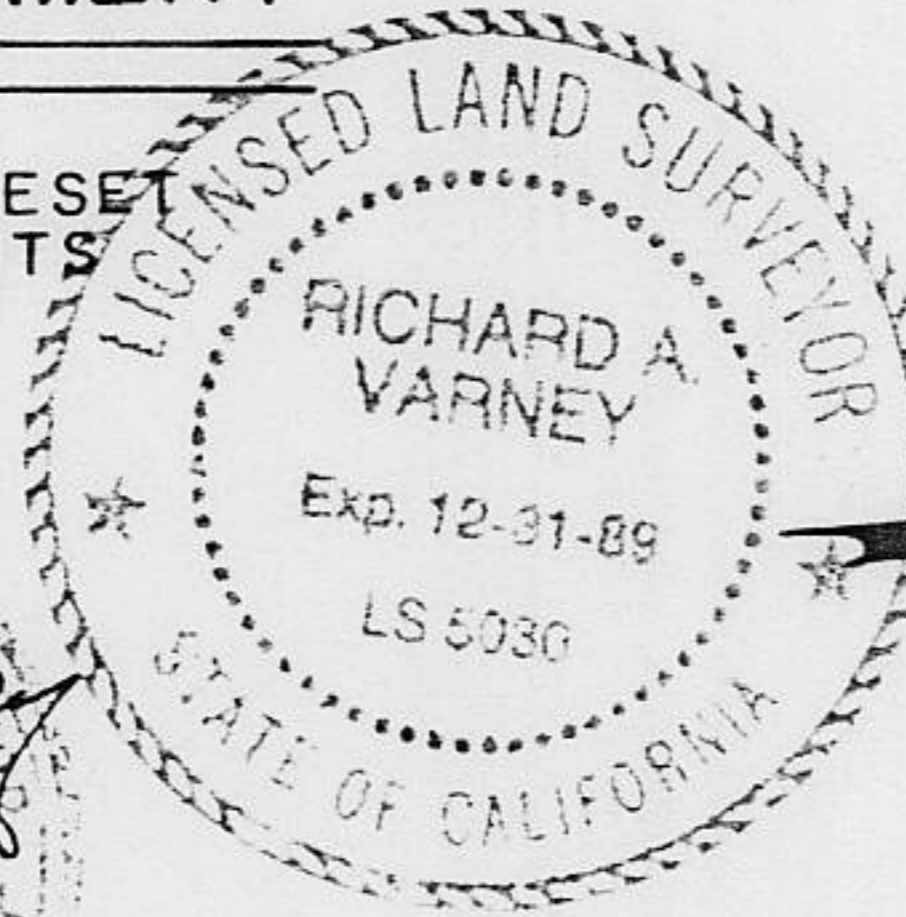
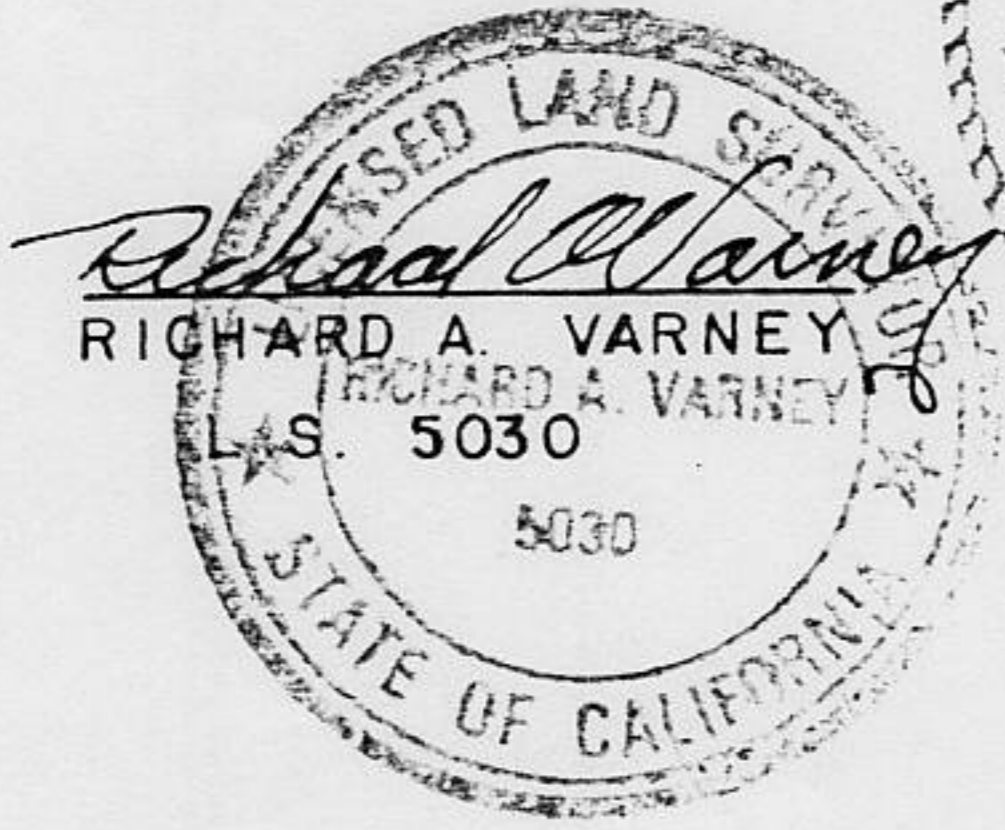
SERENE LAKES UNIT NOS. 5 & 6

LOT 129
PLACER COUNTY, CALIFORNIA
MAY 1987 SCALE 1" = 50

VARNEY LAND SURVEYS

SURVEYORS STATEMENT

THIS LOT CORNER WAS RESET
USING EXISTING MONUMENTS
AS SHOWN PER J BM 67



LEGEND

- ⊙ FOUND RAILROAD SPIKE
- FOUND 5/8" REBAR WITH PLASTIC CAP STAMPED L.S. 3332
- ⊗ SET 5/8" REBAR WITH PLASTIC CAP STAMPED L.S. 5030
- FOUND CORNER ON CONCRETE PAD UNDER SE. CORNER ELECTRICAL BOX

Book 1, Corner Records, Page 142