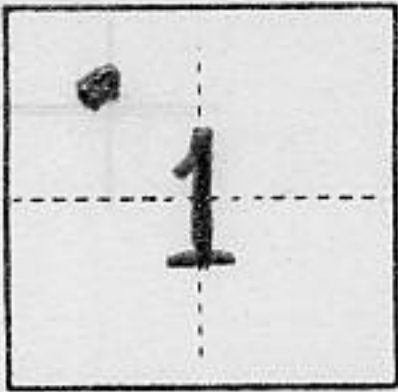


(For County Use Only)

CORNER RECORD

COUNTY OF PLACER T. 12 N. R. 7 E. M. D. MERIDIAN CALIFORNIA

CORNER TYPE: GOVT. CORNER MEANDER RANCHO CONTROL OTHER PROPERTY CORNER
CORNER IDENTIFICATION — DATE OF VISIT 3-18-1988



CORNER — LEFT AS FOUND FOUND AND TAGGED REESTABLISHED OBLITERATED CORNER REBUILT

PHYSICAL DESCRIPTION OF CORNER FOUND; EVIDENCE AND METHOD USED TO IDENTIFY OR REESTABLISH

- ① FOUND 3/4" IRON PIN STAMPED "LS 2515" PER BRS. 15 AT RECORD POSITIONS, UNLESS OTHERWISE NOTED ON SKETCH.
 - ② INDICATES OLD FENCE LINE AND FENCE POST CONSTRUCTED TO FORMER (ORIGINAL) LOCATION OF ANGLE POINT OF R.O.W. SHOWN RESET ③ IN SKETCH BELOW.
- NOTE: NOTHING EVER SET FOR N.W.L.Y CORNER OF "WISEMAN" ON BRS. 15.

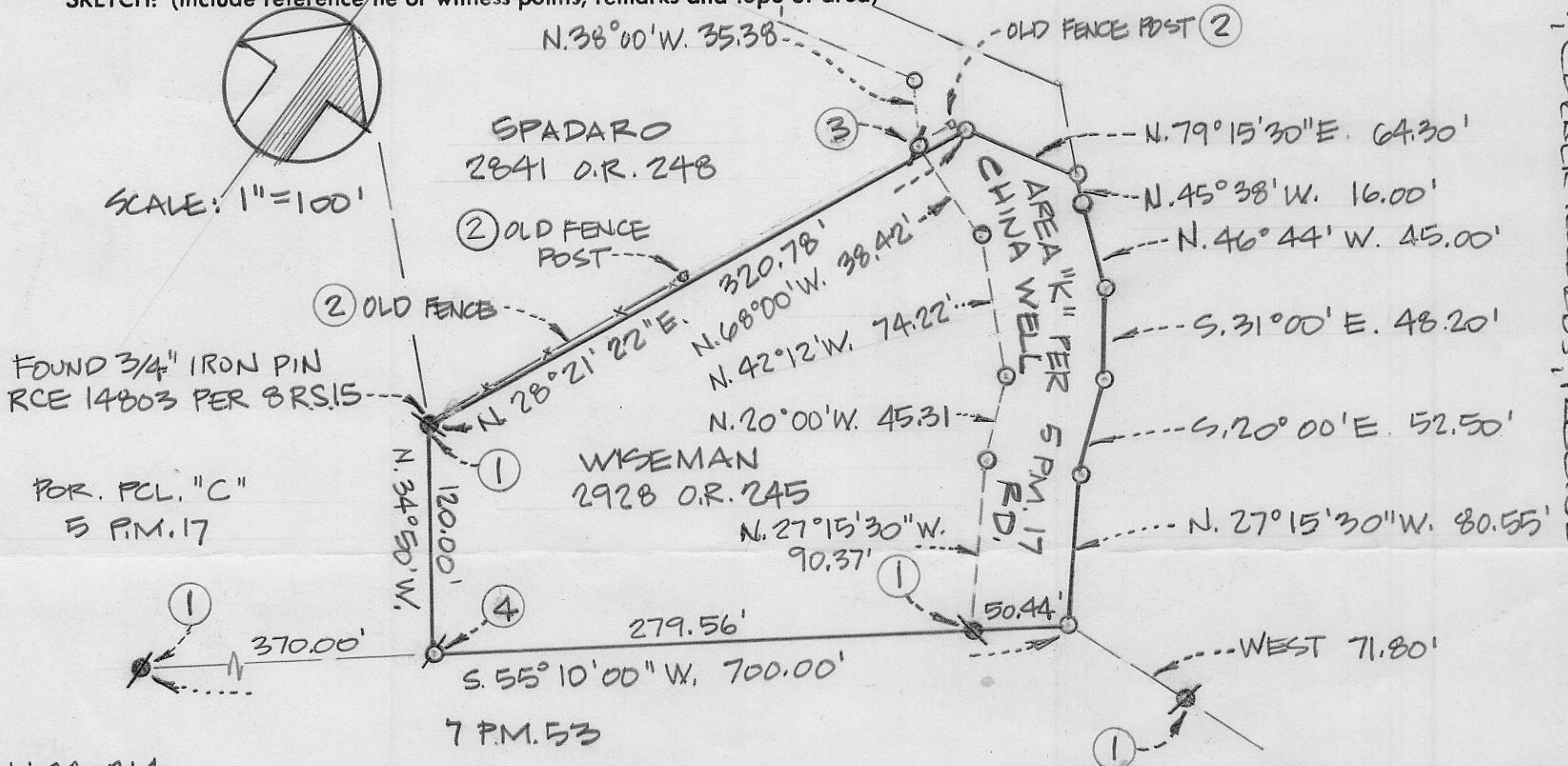
PHYSICAL DESCRIPTION OF MONUMENTS REBUILT OR PERPETUATED

- ③ INDICATES SET 3/4" REBAR WITH TAG "LS 4645" AT ANGLE POINT OF R.O.W. FOR AREA "K" AS SHOWN ON BRS. 15. NOT ON PROP. LINE
- ④ INDICATES SET 3/4" REBAR WITH TAG "LS 4645" USING SINGLE PROPORTION METHOD.

CALIFORNIA COORDINATE SYSTEM ORDER: FIRST SECOND THIRD
STATIONS USED: NGS (USC & GS) STATE COUNTY OTHER STATION _____ STATION _____
ZONE _____ ELEVATION _____ NORTHINGS (Y) _____ EASTINGS (X) _____

(Fold)

SKETCH: (Include reference tie or witness points, remarks and topo of area)



Book 1, Corner Records, Pages 8

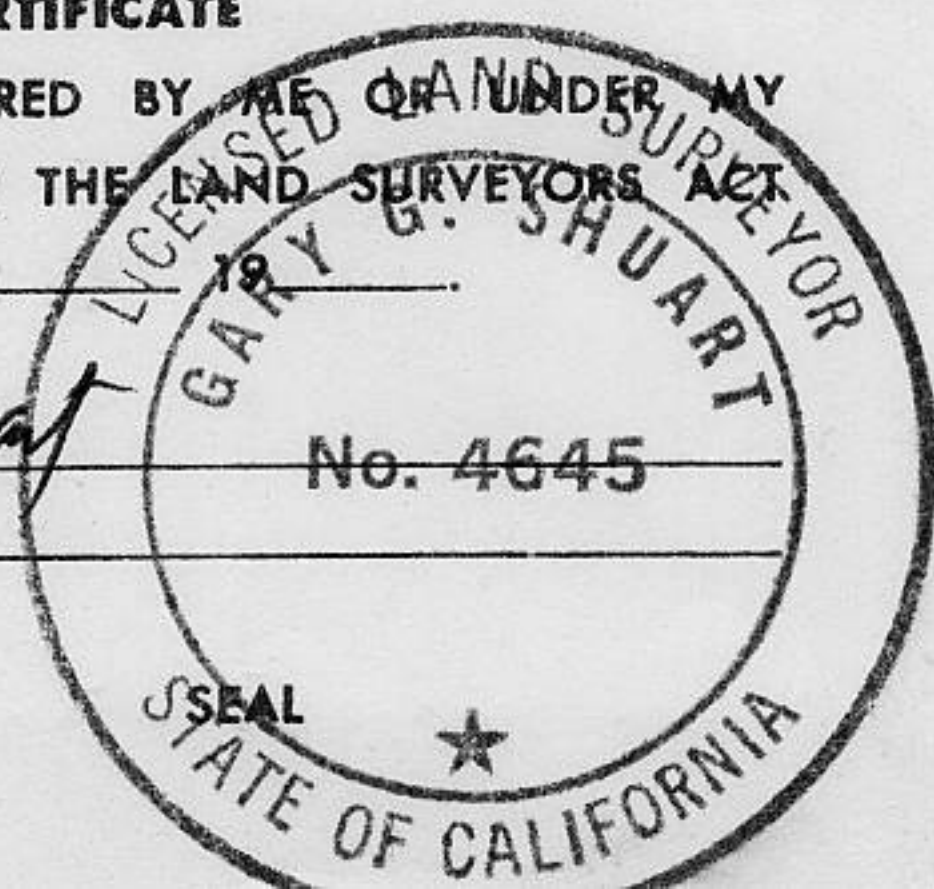
SURVEYOR'S CERTIFICATE

THIS CORNER RECORD WAS PREPARED BY ME OR UNDER MY DIRECTION IN CONFORMANCE WITH THE LAND SURVEYORS ACT ON 3-29-88

SIGNED: Don B. Shuart

L.S. or ~~C.E.~~ No.: 4645

EXPIRES 09/30/90



COUNTY SURVEYOR'S CERTIFICATE

THE CORNER RECORD WAS RECEIVED APR 27 1988 AND EXAMINED AND FILED APR 27 1988

BY: John Rubens

TITLE: DEPUTY COUNTY SURVEYOR

DOCUMENT No. _____

STATEMENT ON BACK OF SHEET

YES NO