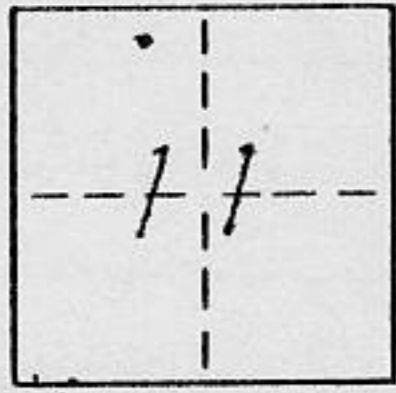


CORNER RECORD

COUNTY OF PLACER T. 16N R. 17E MDM MERIDIAN CALIFORNIA
 CORNER TYPE: GOV'T. CORNER MEANDER RANCHO CONTROL OTHER
 CORNER IDENTIFICATION - DATE OF VISIT MARCH 31 1989



LOT 338, KINGSWOOD WEST SUBDIVISION I MAPS 73

CORNER - LEFT AS FOUND FOUND AND TAGGED REESTABLISHED OBLITERATED CORNER REBUILT

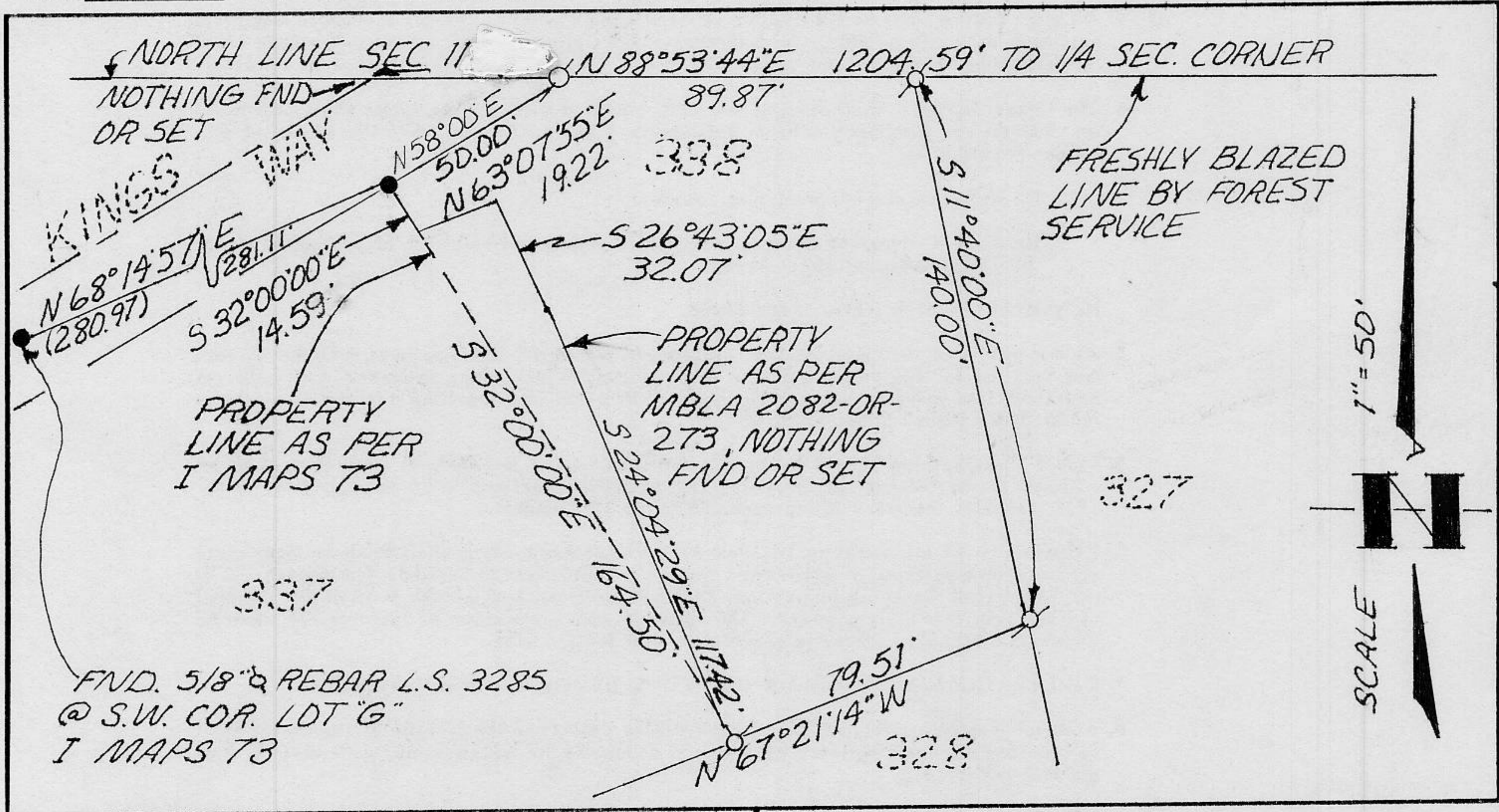
PHYSICAL DESCRIPTION OF CORNER FOUND: EVIDENCE AND METHOD USED TO IDENTIFY OR REESTABLISH _____

● FOUND 5/8" REBAR L.S. 3285 AS PER I MAPS 73

PHYSICAL DESCRIPTION OF MONUMENTS REBUILT OR PERPETUATED _____

○ SET 5/8" REBAR WITH YELLOW PLASTIC CAP, L.S. 3422

CALIFORNIA COORDINATE SYSTEM ORDER: FIRST SECOND THIRD N/A
 STATIONS USED: NGS (USC & GS) STATE COUNTY OTHER STATION _____ STATION _____
 ZONE _____ ELEVATION _____ NORTHINGS (Y) _____ EASTINGS (X) _____



SURVEYOR'S CERTIFICATE

THIS CORNER RECORD WAS PREPARED BY ME OR UNDER MY DIRECTION IN CONFORMANCE WITH THE LAND SURVEYORS ACT ON APRIL 26 1989

SIGNED: Jerry W. Tiffin

L.S. or R.C.E. No. L.S. 3422



COUNTY SURVEYOR'S CERTIFICATE

THIS CORNER RECORD WAS RECEIVED MAY 2 1989 AND EXAMINED AND FILED MAY 2 1989

BY: John R. Rugens
 TITLE: DEPUTY COUNTY SURVEYOR

DOCUMENT No. _____
 STATEMENT ON BACK OF SHEET

YES NO

JN. 293.03

BOOK 1, CORNER RECORDS, PAGE 176