

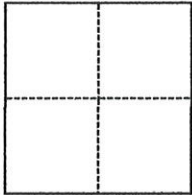
CORNER RECORD

Agency Index BK 22, PG 84
Document Number 20200033

City of Rocklin County of Placer, California
Brief Legal Description Charter Court Centerline, R Maps 8

CORNER TYPE

COORDINATES (Optional)



- Government Corner
- Meander
- Rancho
- Control
- Property
- Other

N. _____ E. _____
Elevation _____
Units Metric U.S. Survey Foot
Horizontal Datum _____
Zone _____ Epoch Date _____
Vertical Datum _____

Date of Survey May 18, 2020

- Complies with Public Resources Code §§8801-8819
- Complies with Public Resources Code §§8890-8902

SEC 12, T.11N., R.6.E.

- PLS Act Ref.: 8765(d) 8771 8773 Other:
- Corner/Monument: Left as found Established Rebuilt Pre-Construction
 Found and tagged Reestablished Referenced Post-Construction

Narrative of corner identified and monument as found, set, reset, replaced, or removed:

See sheet #2 for description(s):

Reestablished centerline monument per Book 22 of Corner Records, Page 41 as shown on sheet 2.

SURVEYOR'S STATEMENT

This Corner Record was prepared by me or under my direction in conformance with
the Professional Land Surveyors' Act on June 12, 2020
Signed [Signature] P.L.S. or R.C.E. No. 6947

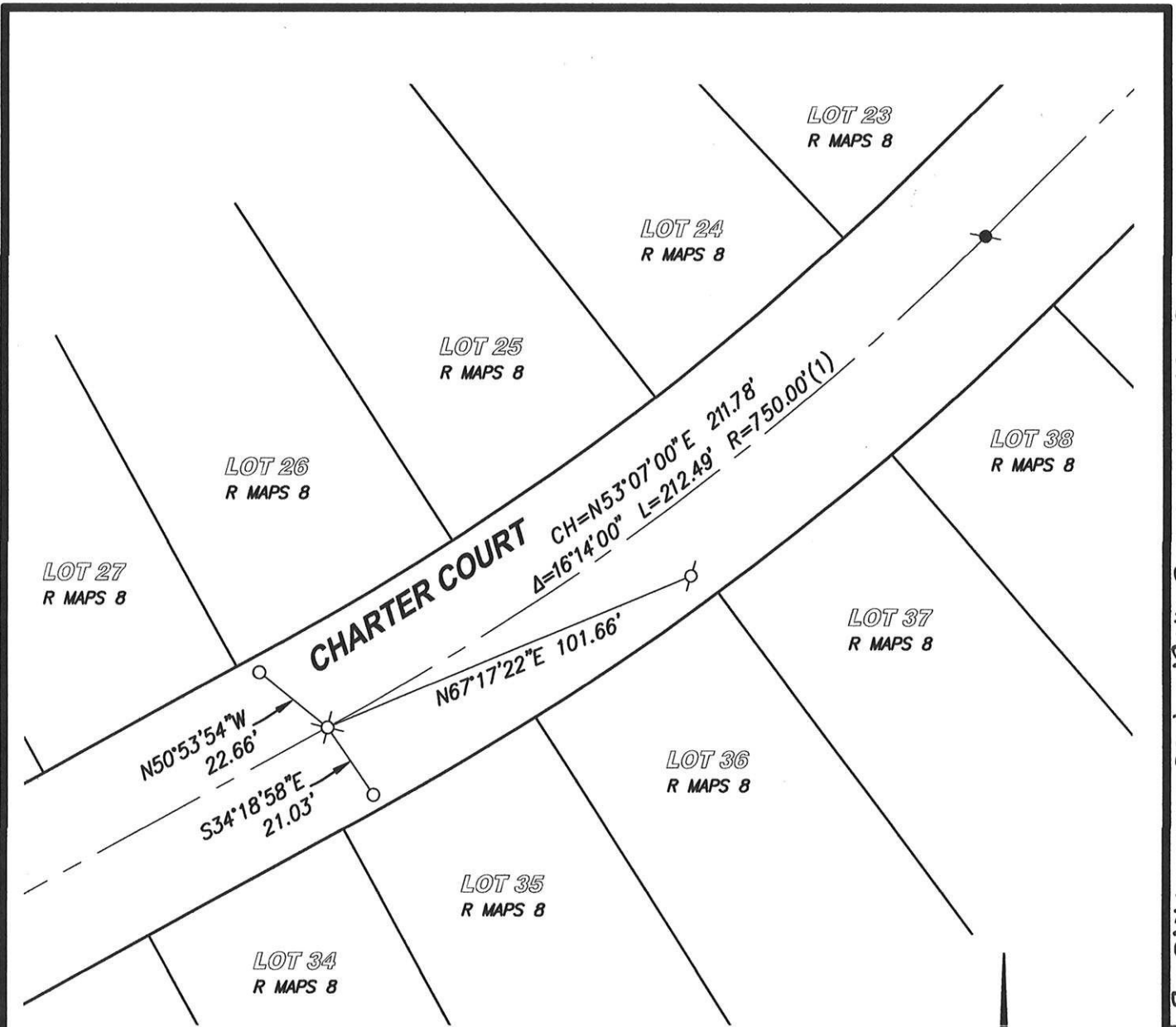


COUNTY SURVEYOR'S STATEMENT

This Corner Record was received JUNE 25, 2020
and examined and filed JUNE 25, 2020
Signed [Signature] P.L.S. or R.C.E. No. 8373
Title Deputy Co. Surveyor
County Surveyor's Comment _____



BOOK 22 OF CORNER RECORDS PAGE 84



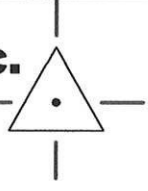
LEGEND

- - - - FOUND MAG NAIL IN BACK OF CURB PER (2)
- ⊙ - - - FOUND MAG NAIL & SHINER PER (2)
- ⊗ - - - FOUND RAILROAD SPIKE PER R MAPS 8 (NO MARKINGS)
- ⊗ - - - SET RAILROAD SPIKE STAMPED "LS 6947"
- (1) - - - RECORD DATA PER R MAPS 8
- (2) - - - RECORD DATA PER BOOK 22 OF CORNER RECORDS, PAGE 41

SCALE 1" = 40'

CenterPoint Engineering, Inc.

Civil Engineering & Land Surveying
 1217 Pleasant Grove Blvd. Suite 130 · Roseville, CA · 95678
 Phone: 916-773-4006 Fax: 916-773-4498



DRAWN BY: BB
CHECKED BY: MH
SHEET: 2 OF 2
SCALE: 1" = 40'
DATE: 6-12-2020