

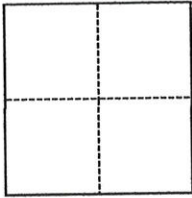
CORNER RECORD

Agency Index BK 22, PG 86
 Document Number 20200035

City of Rocklin County of Placer, California
 Brief Legal Description Swindon Road Centerline, R Maps 7

CORNER TYPE

COORDINATES (Optional)



- Government Corner
- Meander
- Rancho
- Control
- Property
- Other

Date of Survey May 18, 2020

N. _____ E. _____
 Elevation _____
 Units Metric U.S. Survey Foot
 Horizontal Datum _____
 Zone _____ Epoch Date _____
 Vertical Datum _____
 Complies with Public Resources Code §§8801-8819
 Complies with Public Resources Code §§8890-8902

SEC 12, T.11N., R.6E.

- PLS Act Ref.: 8765(d) 8771 8773 Other:
- Corner/Monument: Left as found Established Rebuilt Pre-Construction
 Found and tagged Reestablished Referenced Post-Construction

Narrative of corner identified and monument as found, set, reset, replaced, or removed:

See sheet #2 for description(s):

Reestablished centerline monuments per Book 22 of Corner Records, Page 43 as shown on sheet 2.

SURVEYOR'S STATEMENT

This Corner Record was prepared by me or under my direction in conformance with
 the Professional Land Surveyors' Act on June 12, 2020
 Signed [Signature] P.L.S. or R.C.E. No. 6947

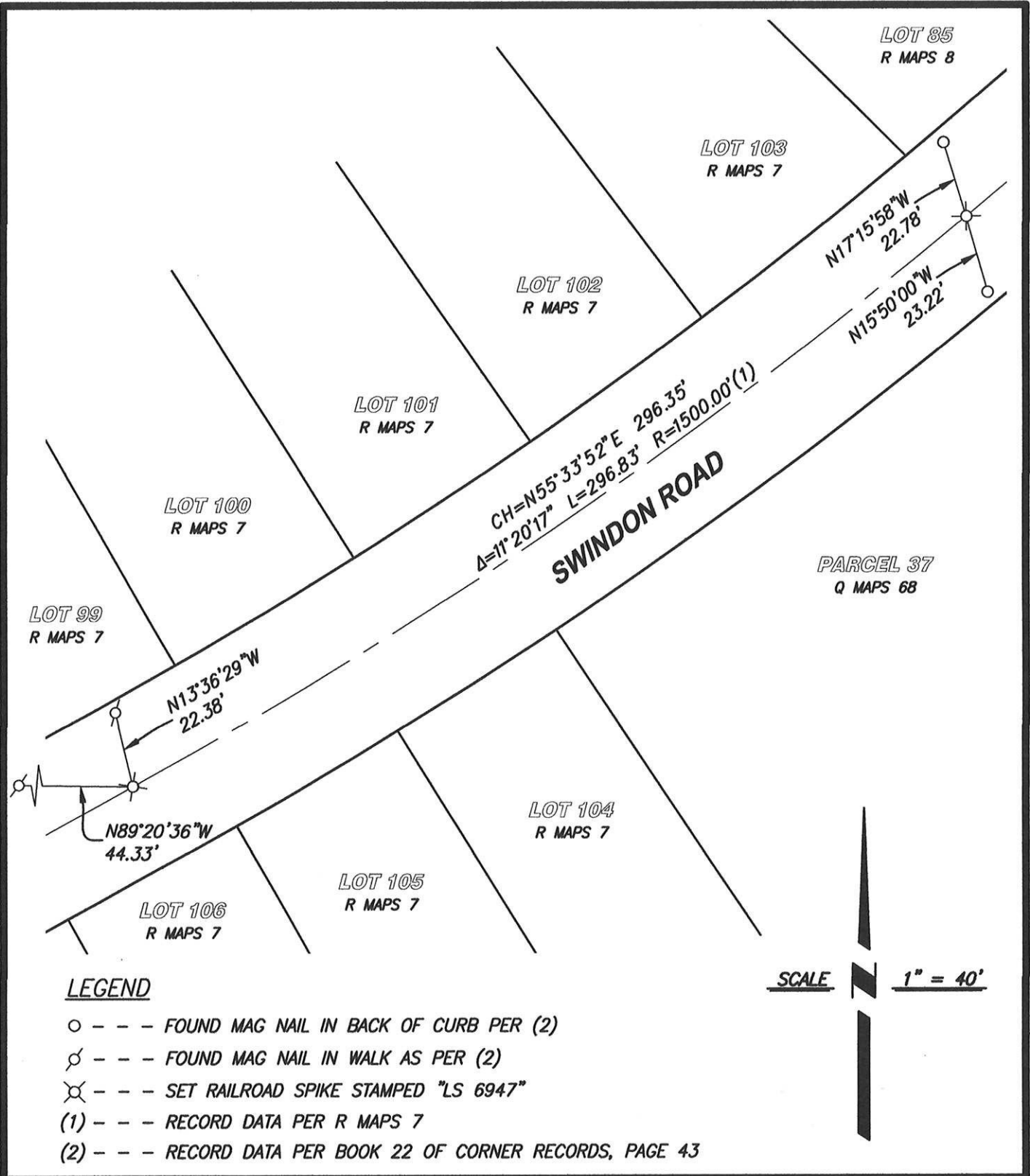


COUNTY SURVEYOR'S STATEMENT

This Corner Record was received JUNE 17, 2020
 and examined and filed JUNE 26, 2020
 Signed [Signature] P.L.S. or R.C.E. No. 8373
 Title Deputy Co. Surveyor
 County Surveyor's Comment _____



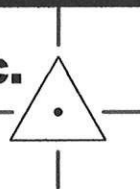
BOOK 22 OF CORNER RECORDS PAGE 86



CenterPoint Engineering, Inc.

Civil Engineering & Land Surveying

1217 Pleasant Grove Blvd. Suite 130 • Roseville, CA • 95678
 Phone: 916-773-4006 Fax: 916-773-4498



DRAWN BY: BB

CHECKED BY: MH

SHEET: 2 OF 2

SCALE: 1" = 40'

DATE: 6-12-2020