

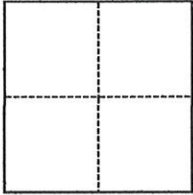
# CORNER RECORD

Agency Index BK 22, PG 87  
 Document Number 20200036

City of Rocklin County of Placer, California  
 Brief Legal Description Centerline of Breen Drive, Q Maps 68

### CORNER TYPE

### COORDINATES (Optional)



- Government Corner     Control  
 Meander                     Property  
 Rancho                         Other

N. \_\_\_\_\_ E. \_\_\_\_\_  
 Elevation \_\_\_\_\_  
 Units  Metric  U.S. Survey Foot  
 Horizontal Datum \_\_\_\_\_  
 Zone \_\_\_\_\_ Epoch Date \_\_\_\_\_  
 Vertical Datum \_\_\_\_\_

Date of Survey May 18, 2020

SEC 12, T.11N., R.6.E.

- Complies with Public Resources Code §§8801-8819  
 Complies with Public Resources Code §§8890-8902

PLS Act Ref.:  8765(d)     8771     8773     Other:  
 Corner/Monument:  Left as found     Established     Rebuilt     Pre-Construction  
                            Found and tagged     Reestablished     Referenced     Post-Construction

Narrative of corner identified and monument as found, set, reset, replaced, or removed:

See sheet #2 for description(s):

Reestablished centerline monument per Book 22 of Corner Records, Page 44 as shown on sheet 2.

### SURVEYOR'S STATEMENT

This Corner Record was prepared by me or under my direction in conformance with  
 the Professional Land Surveyors' Act on June 12, 2020  
 Signed [Signature] P.L.S. or R.C.E. No. 6947

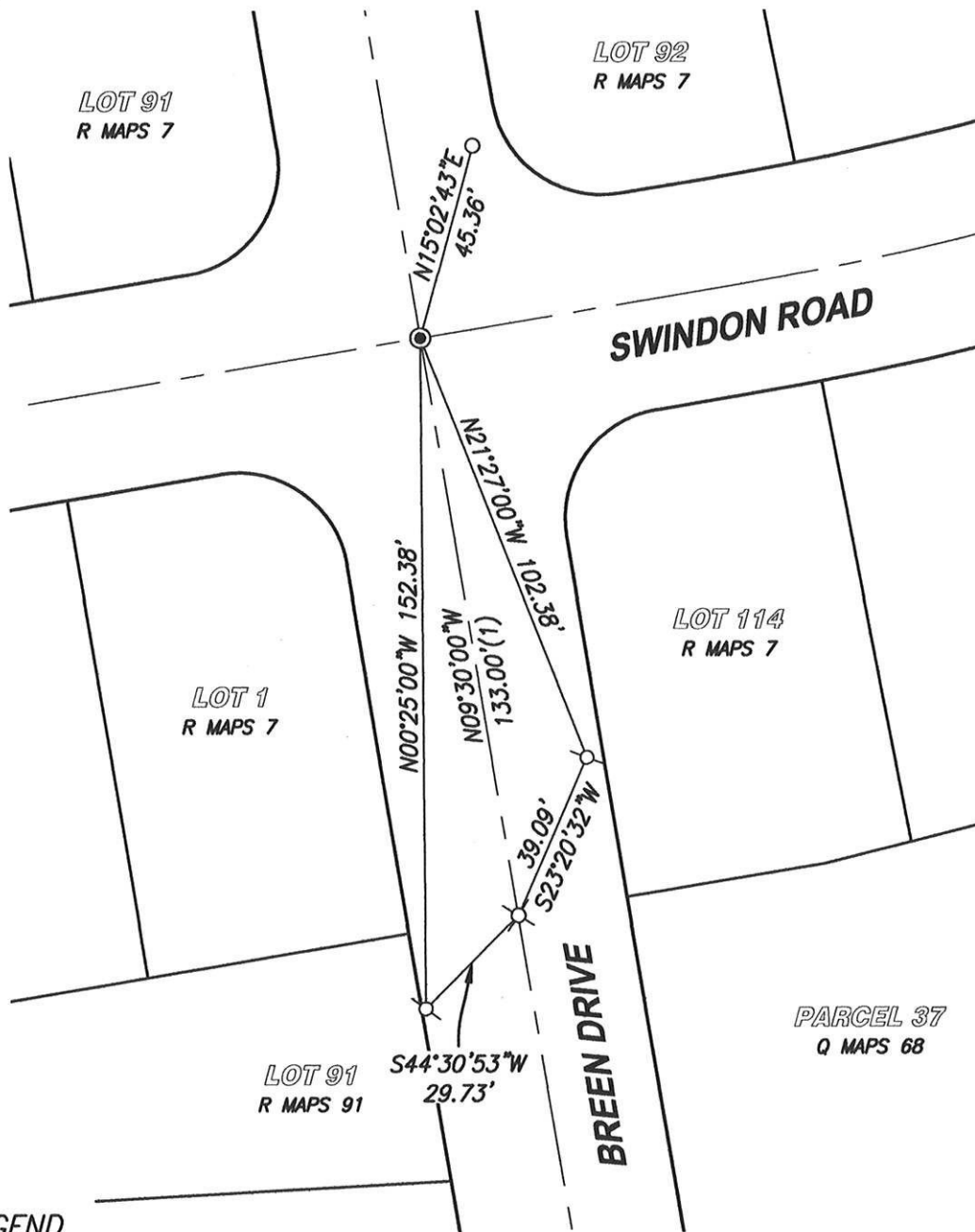


### COUNTY SURVEYOR'S STATEMENT

This Corner Record was received June 17, 2020  
 and examined and filed June 26, 2020  
 Signed [Signature] P.L.S. or R.C.E. No. 8373  
 Title Deputy Co. Surveyor  
 County Surveyor's Comment \_\_\_\_\_



BOOK 22 OF CORNER RECORDS PAGE 87



**LEGEND**

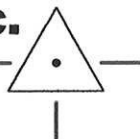
- - - - FOUND MAG NAIL & SHINER IN PER (2)
- ∅ - - - FOUND MAG NAIL IN WALK PER (2)
- ⊙ - - - FOUND 2" BRASS DISC IN WELL PER R MAPS 7 "RCE 21478"
- ⊗ - - - SET RAILROAD SPIKE STAMPED "LS 6947"
- (1) - - - RECORD DATA PER R MAPS 7
- (2) - - - RECORD DATA PER BOOK 22 OF CORNER RECORDS, PAGE 44

**SCALE** 1" = 40'

**CenterPoint Engineering, Inc.**

Civil Engineering & Land Surveying

1217 Pleasant Grove Blvd. Suite 130 · Roseville, CA · 95678  
Phone: 916-773-4006 Fax: 916-773-4498



DRAWN BY: BB

CHECKED BY: MH

SHEET: 2 OF 2

SCALE: 1" = 40'

DATE: 6-12-2020