

CORNER RECORD

Agency Index BK 22, PG 89

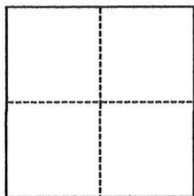
Document Number 20200038

City of Rocklin County of Placer, California

Brief Legal Description Centerline of Baltic Circle, N Maps 40

CORNER TYPE

COORDINATES (Optional)



- Government Corner
- Meander
- Rancho
- Control
- Property
- Other

Date of Survey May 18, 2020

N. _____ E. _____

Elevation _____

Units Metric U.S. Survey Foot

Horizontal Datum _____

Zone _____ Epoch Date _____

Vertical Datum _____

Complies with Public Resources Code §§8801-8819

Complies with Public Resources Code §§8890-8902

SEC 18, T.11N., R.7.E.

PLS Act Ref.: 8765(d) 8771 8773 Other:

Corner/Monument: Left as found Established Rebuilt Pre-Construction

Found and tagged Reestablished Referenced Post-Construction

Narrative of corner identified and monument as found, set, reset, replaced, or removed:

See sheet #2 for description(s):

Reestablished centerline monuments per Book 22 of Corner Records, Page 47 as shown on sheet 2.

SURVEYOR'S STATEMENT

This Corner Record was prepared by me or under my direction in conformance with

the Professional Land Surveyors' Act on June 12, 2002

Signed *Michael Charles Hansen* P.L.S. or R.C.E. No. 6947



COUNTY SURVEYOR'S STATEMENT

This Corner Record was received JUNE 17, 2020

and examined and filed JUNE 26, 2020

Signed *Benjamin J. Bardakjian* P.L.S. or R.C.E. No. 8373

Title Deputy Co. Surveyor

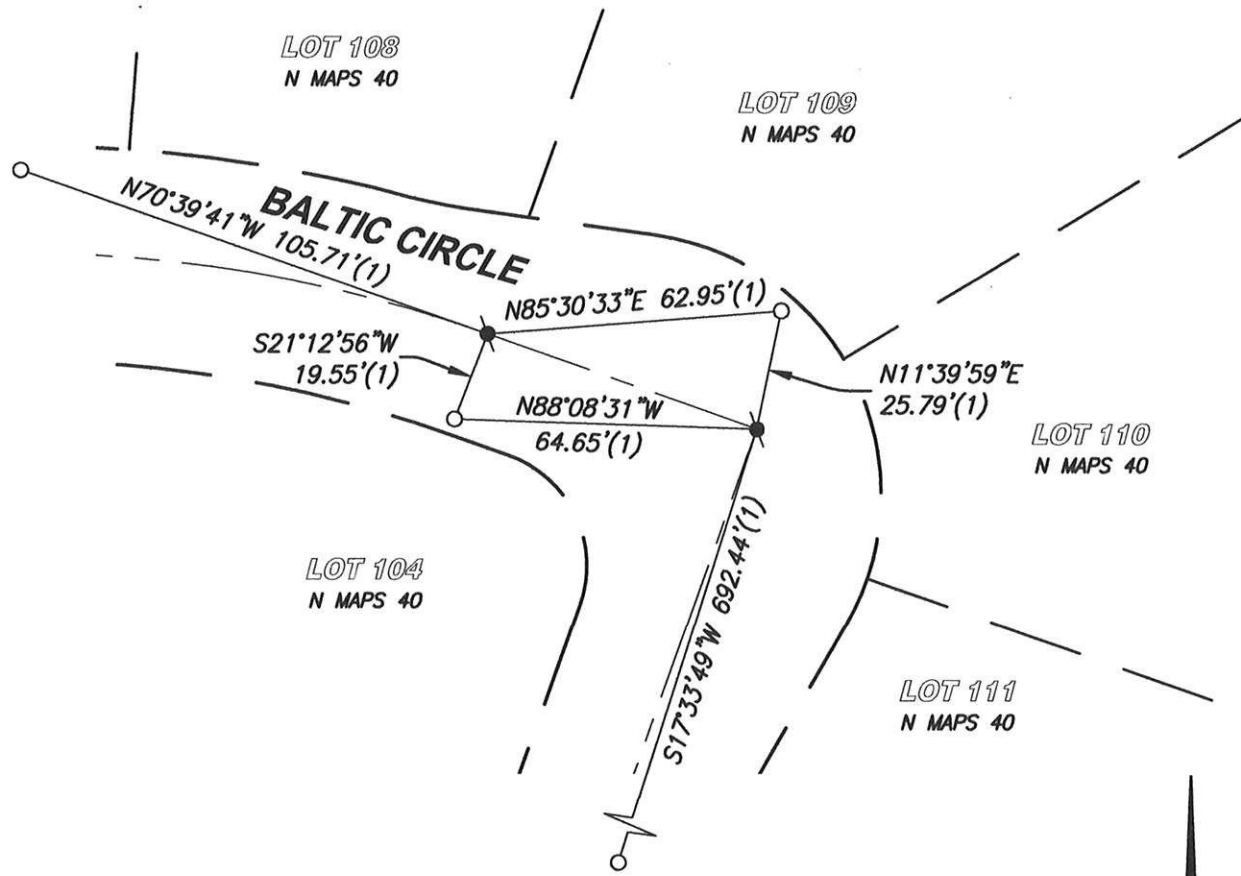
County Surveyor's Comment _____



BOOK 22 OF CORNER RECORDS PAGE 89

NOTES:

THIS CORNER RECORD REPRESENTS THE AS FOUND LOCATION OF THE MONUMENTS SHOWN HEREON, NO SURVEY HAS BEEN MADE OF SAID MONUMENTS IN RELATIONSHIP TO REFERENCED RECORD MAPS.



BOOK 22 OF CORNER RECORDS PAGE 89

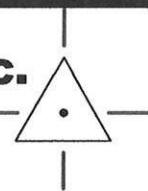
SCALE 1" = 40'

LEGEND

- - - - FOUND CUT '+' IN SIDEWALK PER (1)
- ⊙ - - - SET RAILROAD SPIKE STAMPED "LS 6947"
- (1) - - - RECORD DATA PER BOOK 22 OF CORNER RECORDS, PAGE 47

CenterPoint Engineering, Inc.

Civil Engineering & Land Surveying
 1217 Pleasant Grove Blvd. Suite 130 · Roseville, CA · 95678
 Phone: 916-773-4006 Fax: 916-773-4498



DRAWN BY: BB
CHECKED BY: MH
SHEET: 2 OF 2
SCALE: 1" = 40'
DATE: 6-12-2020