

# CORNER RECORD

Agency Index BK 22, PG 91

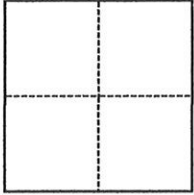
Document Number 20200040

City of Rocklin County of Placer, California

Brief Legal Description Centerline of Sweetwater Drive at Baltic Circle, N Maps 40

### CORNER TYPE

### COORDINATES (Optional)



- Government Corner
- Meander
- Rancho
- Control
- Property
- Other

N. \_\_\_\_\_ E. \_\_\_\_\_

Elevation \_\_\_\_\_

Units  Metric  U.S. Survey Foot

Horizontal Datum \_\_\_\_\_

Zone \_\_\_\_\_ Epoch Date \_\_\_\_\_

Vertical Datum \_\_\_\_\_

Complies with Public Resources Code §§8801-8819

Complies with Public Resources Code §§8890-8902

Date of Survey May 18, 2020

SEC 18, T.11N., R.7.E.

PLS Act Ref.:  8765(d)  8771  8773  Other:

Corner/Monument:  Left as found  Established  Rebuilt  Pre-Construction

Found and tagged  Reestablished  Referenced  Post-Construction

Narrative of corner identified and monument as found, set, reset, replaced, or removed:

See sheet #2 for description(s):

Reestablished centerline monument per Book 22 of Corner Records, Page 49 as shown on sheet 2.

### SURVEYOR'S STATEMENT

This Corner Record was prepared by me or under my direction in conformance with

the Professional Land Surveyors' Act on June 12, 2020

Signed [Signature] P.L.S. or R.C.E. No. 6947



### COUNTY SURVEYOR'S STATEMENT

This Corner Record was received JUNE 17, 2020

and examined and filed JUNE 20, 2020

Signed [Signature] P.L.S. or R.C.E. No. 8373

Title Deputy Co. Surveyor

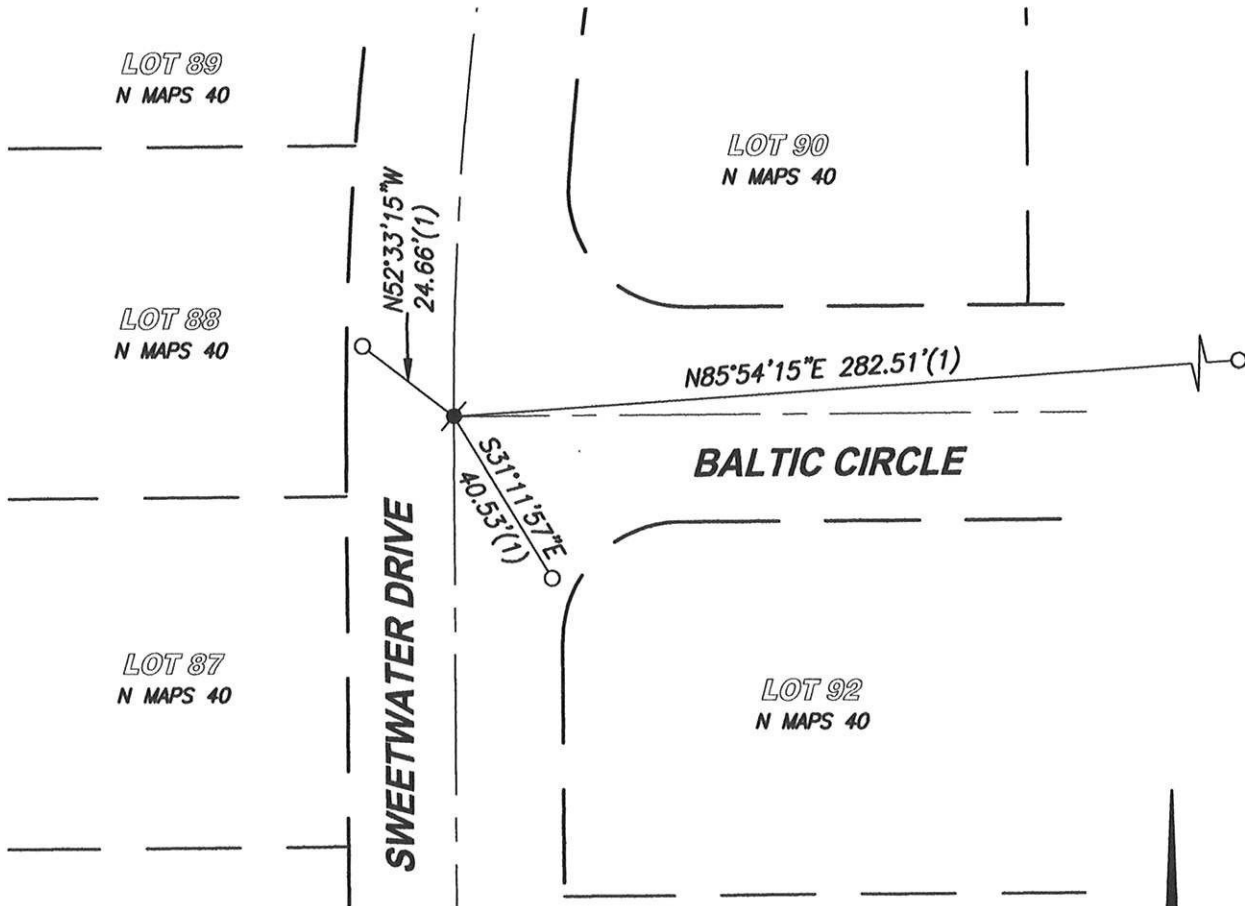
County Surveyor's Comment



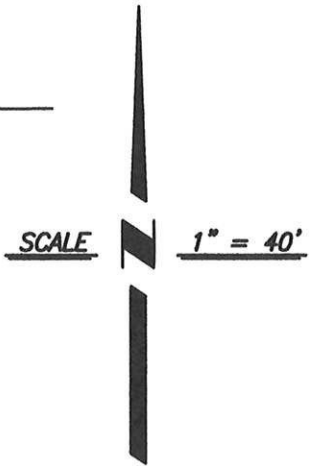
BOOK 22 OF CORNER RECORDS PAGE 91

**NOTES:**

THIS CORNER RECORD REPRESENTS THE AS FOUND LOCATION OF THE MONUMENTS SHOWN HEREON, NO SURVEY HAS BEEN MADE OF SAID MONUMENTS IN RELATIONSHIP TO REFERENCED RECORD MAPS.



BOOK 22 OF CORNER RECORDS PAGE 91

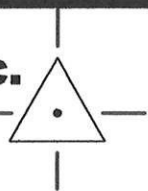


**LEGEND**

- - - - FOUND CUT '+' IN SIDEWALK PER (1)
- ⊙ - - - SET RAILROAD SPIKE STAMPED "LS 6947"
- (1) - - - RECORD DATA PER BOOK 22 OF CORNER RECORDS, PAGE 49

**CenterPoint Engineering, Inc.**

Civil Engineering & Land Surveying  
 1217 Pleasant Grove Blvd. Suite 130 · Roseville, CA · 95678  
 Phone: 916-773-4006 Fax: 916-773-4498



DRAWN BY: BB
CHECKED BY: MH
SHEET: 2 OF 2
SCALE: 1" = 40'
DATE: 6-12-2020