

# CORNER RECORD

Agency Index BK 22, PG 92

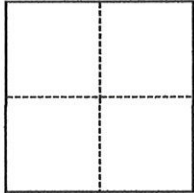
Document Number 20200041

City of Rocklin County of Placer, California

Brief Legal Description Centerline of Sweetwater Drive at Hillside Drive, N Maps 40

### CORNER TYPE

### COORDINATES (Optional)



- Government Corner
- Meander
- Rancho
- Control
- Property
- Other

Date of Survey May 18, 2020

N. \_\_\_\_\_ E. \_\_\_\_\_

Elevation \_\_\_\_\_

Units  Metric  U.S. Survey Foot

Horizontal Datum \_\_\_\_\_

Zone \_\_\_\_\_ Epoch Date \_\_\_\_\_

Vertical Datum \_\_\_\_\_

Complies with Public Resources Code §§8801-8819

Complies with Public Resources Code §§8890-8902

SEC 18, T.11N., R.7.E.

PLS Act Ref.:  8765(d)  8771  8773  Other:

Corner/Monument:  Left as found  Established  Rebuilt  Pre-Construction

Found and tagged  Reestablished  Referenced  Post-Construction

Narrative of corner identified and monument as found, set, reset, replaced, or removed:

See sheet #2 for description(s):

Reestablished centerline monuments per Book 22 of Corner Records, Page 50 as shown on sheet 2.

### SURVEYOR'S STATEMENT

This Corner Record was prepared by me or under my direction in conformance with

the Professional Land Surveyors' Act on June 12, 2020

Signed [Signature] P.L.S. or R.C.E. No. 6947



### COUNTY SURVEYOR'S STATEMENT

This Corner Record was received JUNE 17, 2020

and examined and filed JUNE 26, 2020

Signed [Signature] P.L.S. or R.C.E. No. 8373

Title Deputy Co. Surveyor

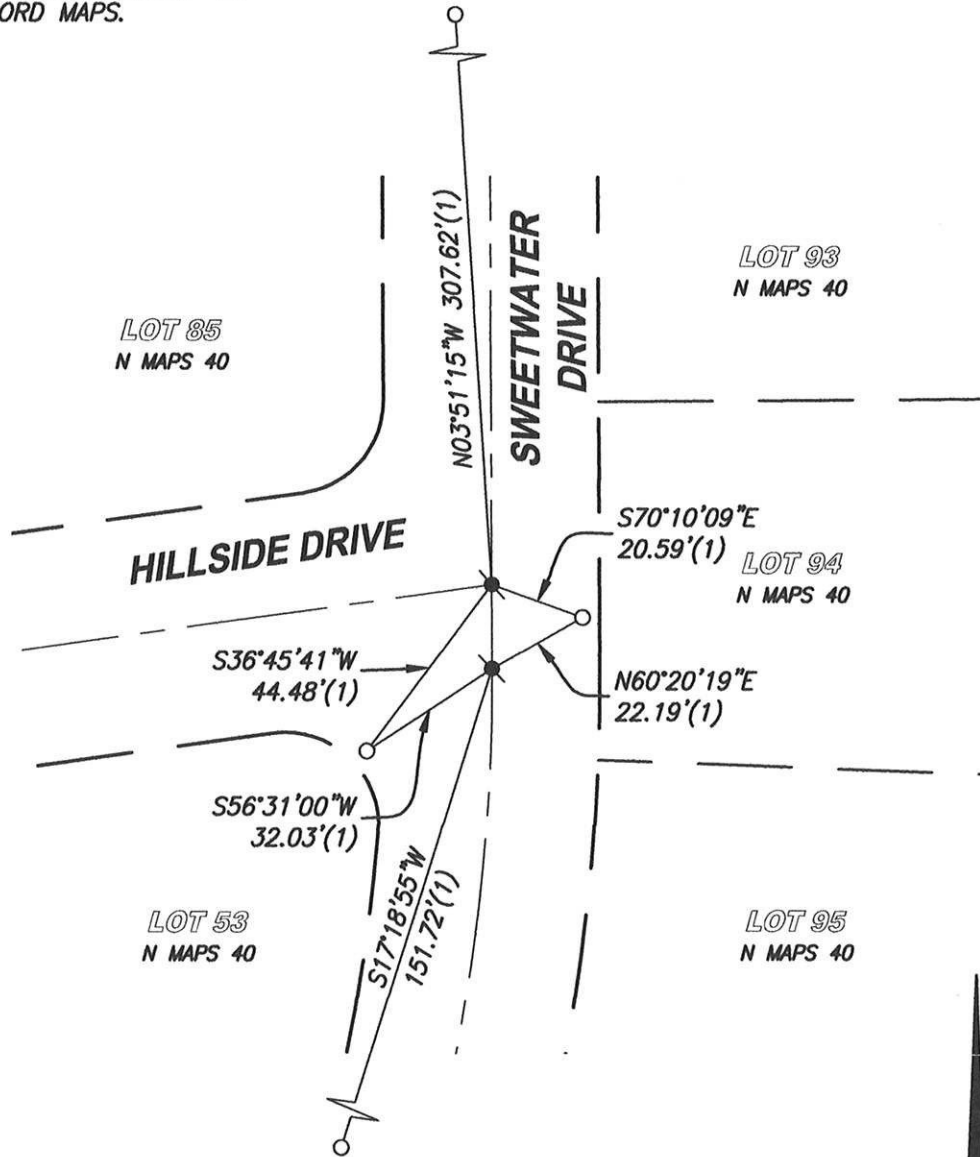
County Surveyor's Comment



BOOK 22 OF CORNER RECORDS PAGE 92

**NOTES:**

THIS CORNER RECORD REPRESENTS THE AS FOUND LOCATION OF THE MONUMENTS SHOWN HEREON, NO SURVEY HAS BEEN MADE OF SAID MONUMENTS IN RELATIONSHIP TO REFERENCED RECORD MAPS.



SCALE 1" = 40'

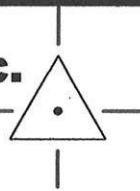
**LEGEND**

- - - - FOUND CUT '+' IN SIDEWALK PER (1)
- ⊙ - - - SET RAILROAD SPIKE STAMPED "LS 6947"
- (1) - - - RECORD DATA PER BOOK 22 OF CORNER RECORDS, PAGE 50

BOOK 22 OF CORNER RECORDS PAGE 92

**CenterPoint Engineering, Inc.**

Civil Engineering & Land Surveying  
 1217 Pleasant Grove Blvd. Suite 130 · Roseville, CA · 95678  
 Phone: 916-773-4006 Fax: 916-773-4498



DRAWN BY: BB

CHECKED BY: MH

SHEET: 2 OF 2

SCALE: 1" = 40'

DATE: 6-12-2020