

# CORNER RECORD

Agency Index BK 23, PG 25

Document Number 20200062

City of \_\_\_\_\_ County of PLACER, California

Brief Legal Description WEST LINE LOT 94 IN BOOK H OF MAPS AT PAGE 38, P.C.R.

### CORNER TYPE

### COORDINATES (Optional)



- Government Corner
- Meander
- Rancho
- Control
- Property
- Other

Date of Survey June 23, 2020

N. \_\_\_\_\_ E. \_\_\_\_\_

Elevation \_\_\_\_\_

Units  Metric  U.S. Survey Foot

Horizontal Datum \_\_\_\_\_

Zone \_\_\_\_\_ Epoch Date \_\_\_\_\_

Vertical Datum \_\_\_\_\_

Complies with Public Resources Code §§8801-8819

Complies with Public Resources Code §§8890-8902

W 1/2 SEC. 16 T13N R8E

PLS Act Ref.:  8765(d)  8771  8773  Other:

Corner/Monument:  Left as found  Established  Rebuilt  Pre-Construction

Found and tagged  Reestablished  Referenced  Post-Construction

Narrative of corner identified and monument as found, set, reset, replaced, or removed:

See sheet #2 for description(s):

MONUMENTS FOUND PER H MAPS 38 AND 20 RS 2 AND REESTABLISHED BY RECORD BEARING AND DISTANCE PER BOOK H OF MAPS AT PAGE 38.

### SURVEYOR'S STATEMENT

This Corner Record was prepared by me or under my direction in conformance with

the Professional Land Surveyors' Act on July 31, 2020

Signed Patrick A. Druding P.L.S. or R.C.E. No. 8933



10/1/20

### COUNTY SURVEYOR'S STATEMENT

This Corner Record was received OCTOBER 1, 2020

and examined and filed OCTOBER 2, 2020

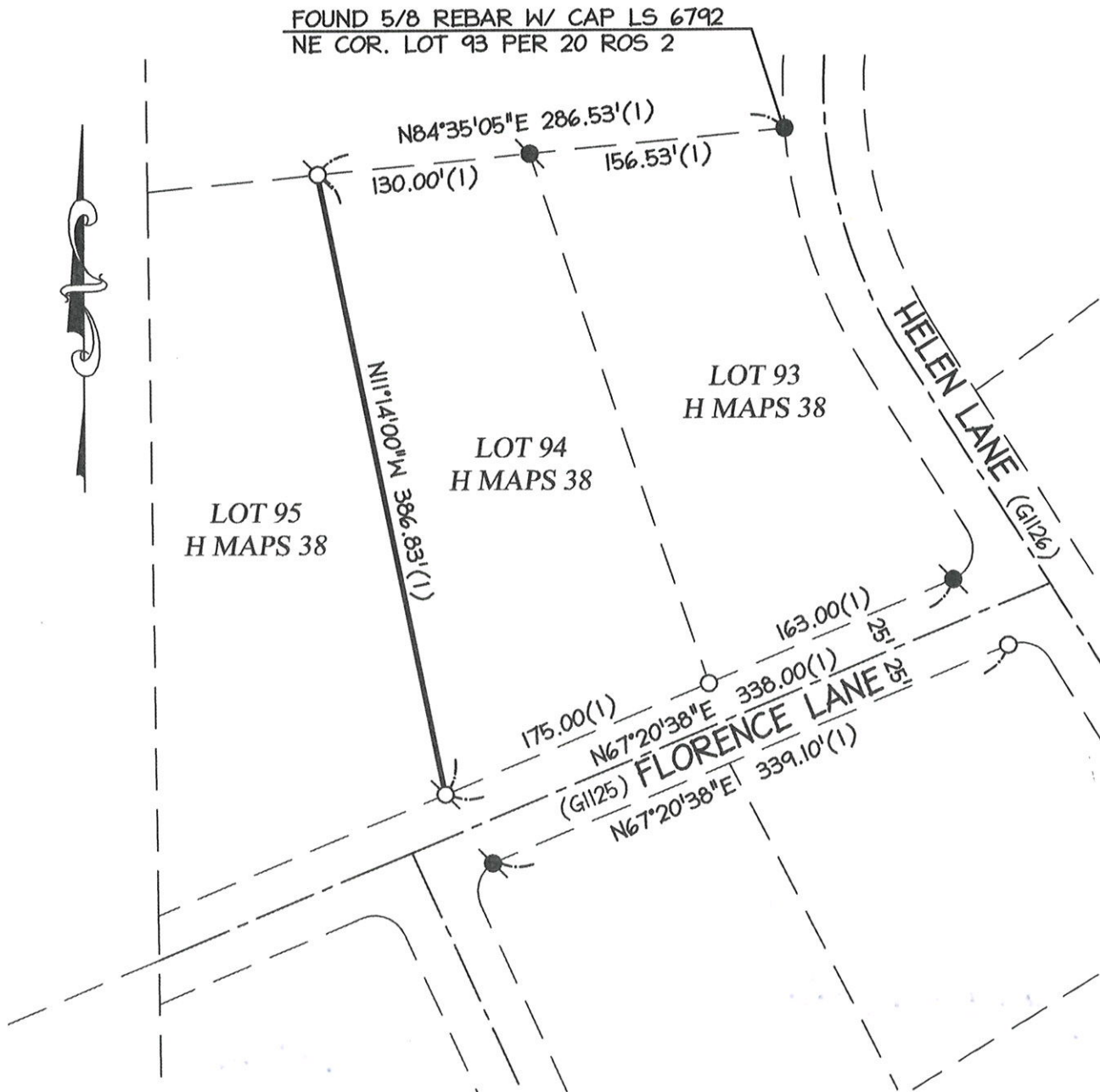
Signed Benjamin J. Bardakian P.L.S. or R.C.E. No. 8373

Title Deputy County Surveyor

County Surveyor's Comment \_\_\_\_\_



BOOK 23 OF CORNER RECORDS PAGE 25



**LEGEND**

- DIMENSION POINT NOTHING FOUND OR SET
- ⊗ SET 3/4" REBAR W/ PLASTIC CAP LS 8933
- FOUND AS NOTED
- ⊙ FOUND 1/2" IRON PIN(1) OR AS NOTED
- (1) RECORD PER H MAPS 38

NOTE:  
ALL BEARINGS & DISTANCES SHOWN HEREON  
ARE RECORD PER (1)



*Patrick R. Druding*

