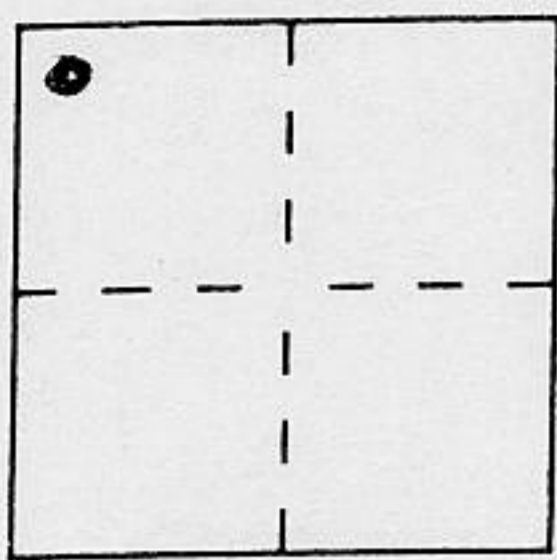


# CORNER RECORD

Document Number \_\_\_\_\_

City of \_\_\_\_\_ County of PLACER, California

Brief Legal Description LOTS 4-9 BLOCK "U" BROCKWAY VISTA SUB. BOOK "D" OF MAPS PAGE 16



S1/4, 19  
T. 16 N.  
R. 18 E.  
M. D. M.

### CORNER TYPE

Government Corner  Control   
 Meander  Property   
 Rancho  Other   
 Date of Survey 5-5-97

### COORDINATES (Optional)

N. \_\_\_\_\_  
 E. \_\_\_\_\_  
 Zone \_\_\_\_\_ Datum \_\_\_\_\_  
 Elev. \_\_\_\_\_

Corner — Left as found  Found and tagged  Established  Reestablished  Rebuilt

Identification and type of corner found: Evidence used to identify or procedure used to establish or reestablish the corner:

- = FOUND 5/8" REBAR w/PLASTIC CAP L.S. 3719
- = FOUND 5/8" REBAR w/WASHER (ILLEGIBLE)
- ⊗ = FOUND 1" (I.D.) IRON PIPE (NO TAG)
- ▲ = FOUND 1/2" REBAR (NO TAG)
- ⊙ = FOUND 5/8" REBAR w/RED PLASTIC CAP L.S. 6460

A description of the physical condition of the monument as found and as set or reset:

- = SET 3/4" IRON PIPE w/PLASTIC PLUG L.S. 5549

JH. 9733

### SURVEYOR'S STATEMENT

This Corner Record was prepared by me or under my direction in conformance with the Land Surveyors' Act on MAY 6 1997.

Signed Charles R. Sage Jr. L.S. or R.C.E. Number L.S. 5549  
 LIC. EXPIRES 6-30-97

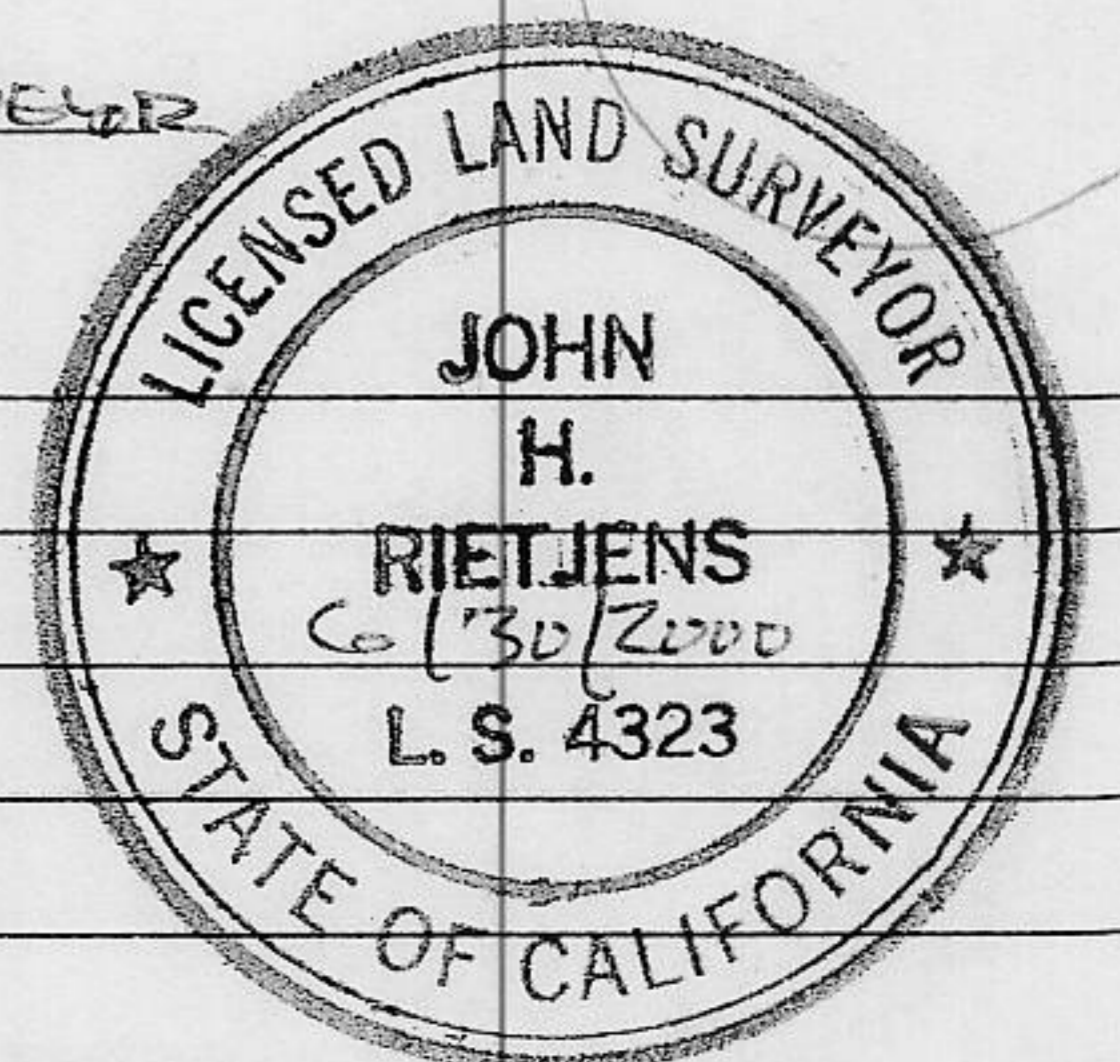


### COUNTY SURVEYOR'S STATEMENT

This Corner Record was received JUNE 6 1997 and examined and filed JUNE 10 1997.

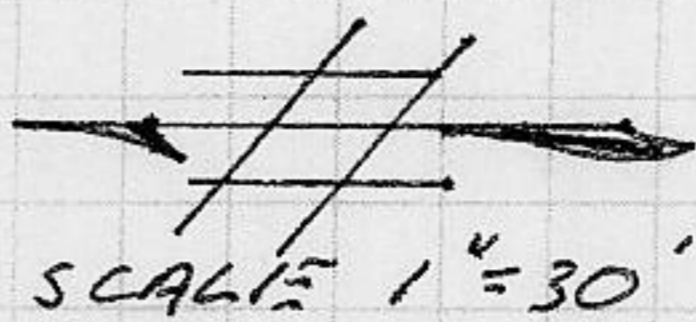
Signed John Rietjens Title COUNTY SURVEYOR

County Surveyor's Comment \_\_\_\_\_



BOOK 5 CORNER RECORDS PAGE 84

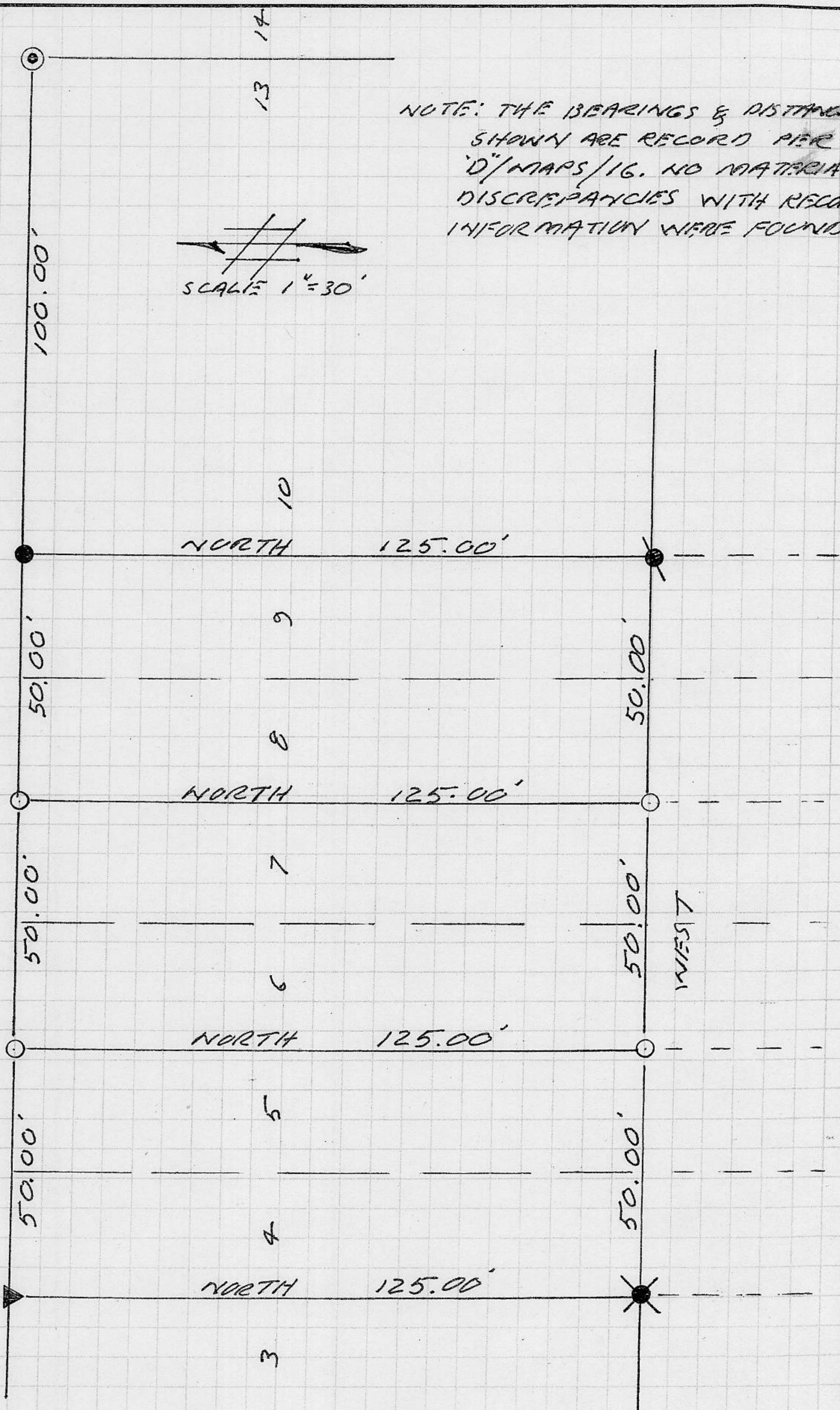
NOTE: THE BEARINGS & DISTANCES SHOWN ARE RECORD PER "D" MAPS/16. NO MATERIAL DISCREPANCIES WITH RECORD INFORMATION WERE FOUND.



CUTTHROAT

WEST

WEST



40

40