

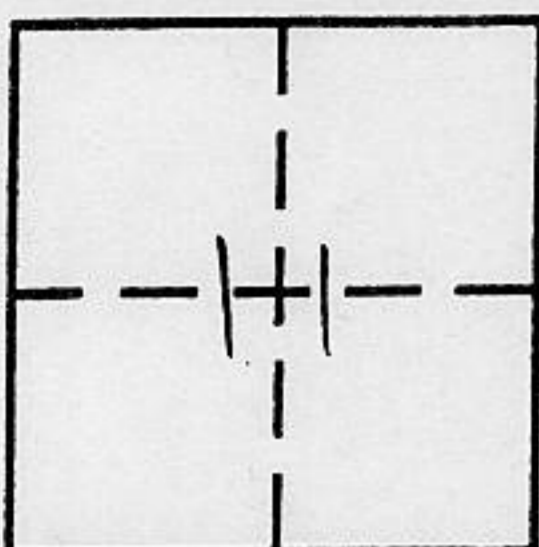
CORNER RECORD

COUNTY OF PLACER, CALIFORNIA

City of Auburn

Document Number _____

Brief Legal Description Ptn. Lots 16 & 17 D/Maps/63



T12N
R08E
M.D.M.

CORNER TYPE

- Government Corner
- Meander
- Rancho
- Date of Survey 20 March 97
- Control
- Property
- Other

COORDINATES (Optional)

N. _____
 E. _____
 Zone _____ Datum _____
 Elev. _____

Corner — Left as found Found and tagged Established Reestablished Rebuilt

Identification and type of corner found: Evidence used to identify or procedure used to establish or reestablish corner:

see sketch

A description of the physical condition of the monument as found and as set or reset:

see sketch

SURVEYOR'S STATEMENT

This Corner Record was prepared by me or under my direction in conformance with the Land

Surveyors' Act on 20 March 1997.

Signed [Signature] (L.S.) or R.C.E. Number 6230

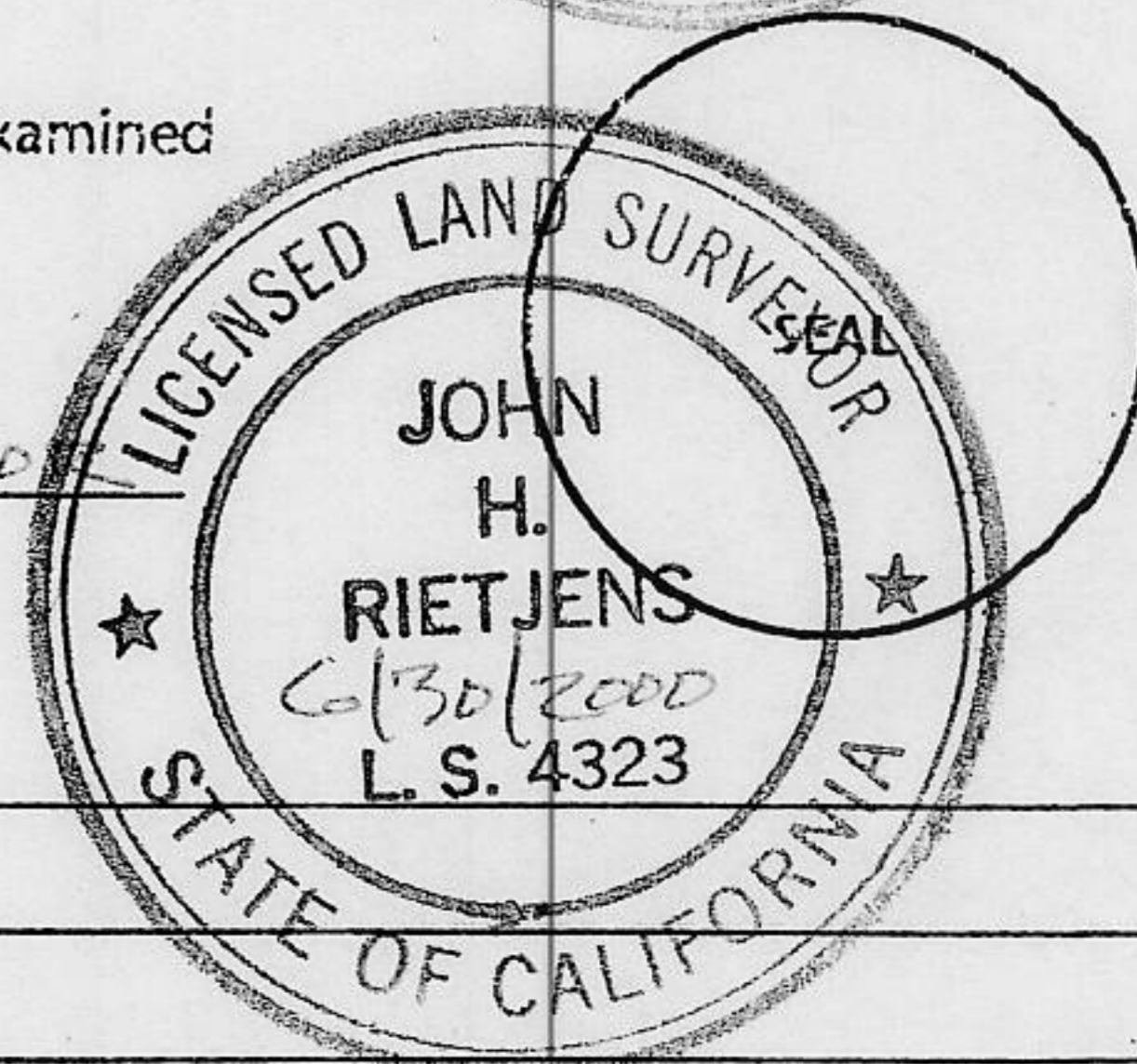


COUNTY SURVEYOR'S STATEMENT

This Corner Record was received MARCH 21 1997 and examined

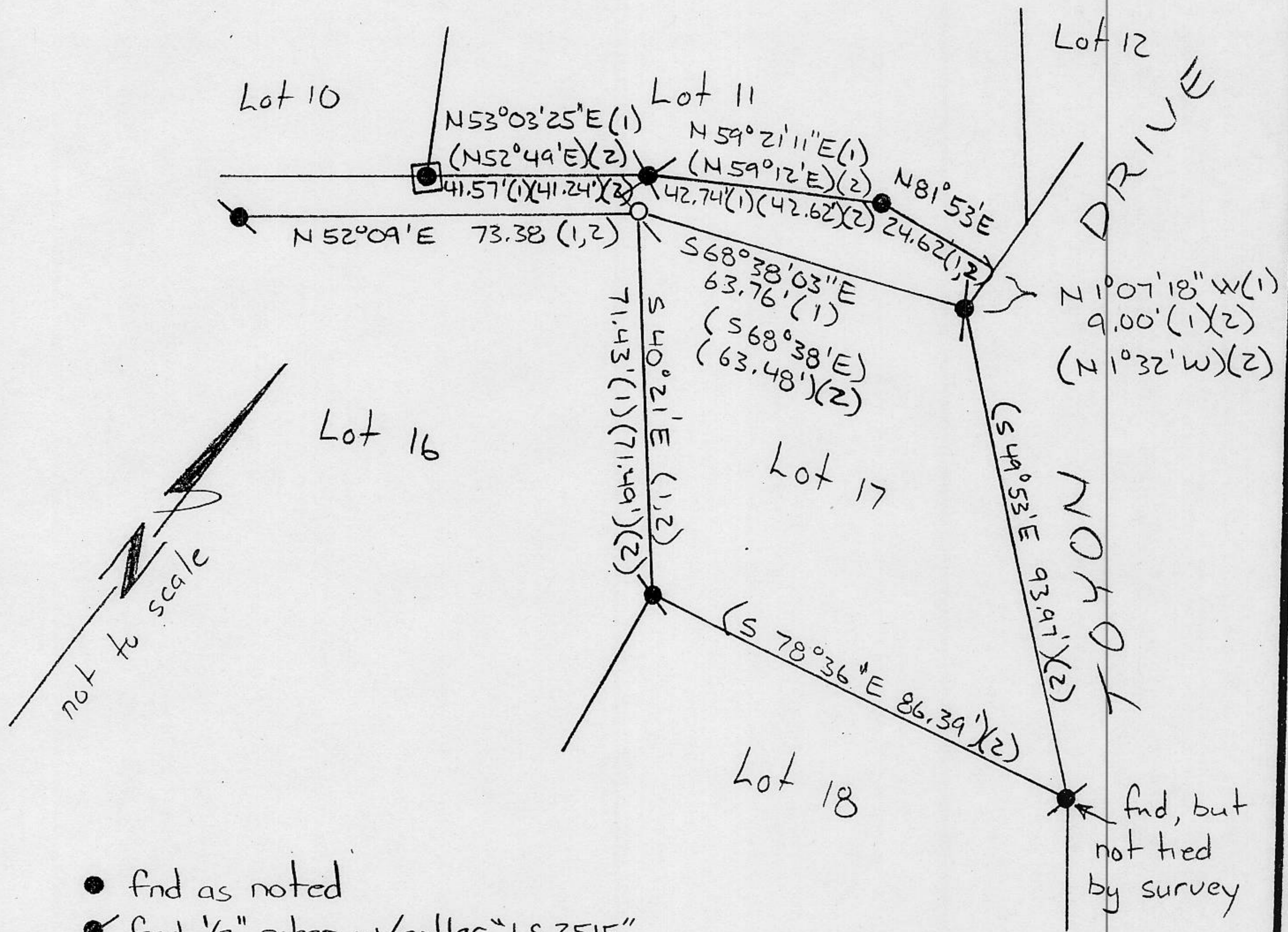
and filed APRIL 2 1997.

Signed [Signature] Title COUNTY SURVEYOR



County Surveyor's Comment _____

BOOK 5 CORNER RECORDS PAGE 78



- fnd as noted
 - fnd 1/2" rebar w/collar "LS 2515"
 - ⊗ fnd 5/8" rebar "LS 6893"
 - ⊠ fnd 3/4" rebar "LS 6893"
 - ⊙ set 5/8" rebar "LS 6230"
- (1) record per 13/SUR/158
 (2) record per D/Maps/63

PLAT OF SURVEY
 OF PORTIONS OF LOTS 16 & 17 OF THE
 RESUBDIVISION OF CANYON COURT
 AS FILED IN BOOK D OF MAPS, PAGE 63
 PLACER COUNTY CALIFORNIA
 March 1997