

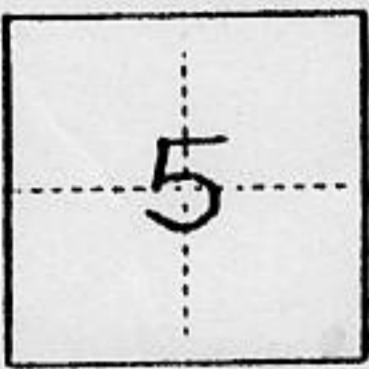
(For County Use Only)

### CORNER RECORD

COUNTY OF PLACER T. 15N R. 17E MDM MERIDIAN CALIFORNIA

CORNER TYPE: GOV'T. CORNER  MEANDER  RANCHO  CONTROL  OTHER

CORNER IDENTIFICATION - DATE OF VISIT \_\_\_\_\_ 19\_\_



ROCKY RIDGE UNIT NO. 3

TRACTS 228 & 613

CORNER - LEFT AS FOUND  FOUND AND TAGGED  REESTABLISHED OBLITERATED CORNER  REBUILT

PHYSICAL DESCRIPTION OF CORNER FOUND; EVIDENCE AND METHOD USED TO IDENTIFY OR REESTABLISH

SEE EXHIBIT "A"

PHYSICAL DESCRIPTION OF MONUMENTS REBUILT OR PERPETUATED

SEE EXHIBIT "A"

CALIFORNIA COORDINATE SYSTEM ORDER: FIRST  SECOND  THIRD   
STATIONS USED: NGS (USC & GS)  STATE  COUNTY  OTHER  STATION \_\_\_\_\_ STATION \_\_\_\_\_  
ZONE \_\_\_\_\_ ELEVATION \_\_\_\_\_ NORTHINGS (Y) \_\_\_\_\_ EASTINGS (X) \_\_\_\_\_

(Fold)

SKETCH: (Include reference tie or witness points, remarks and topo of area)

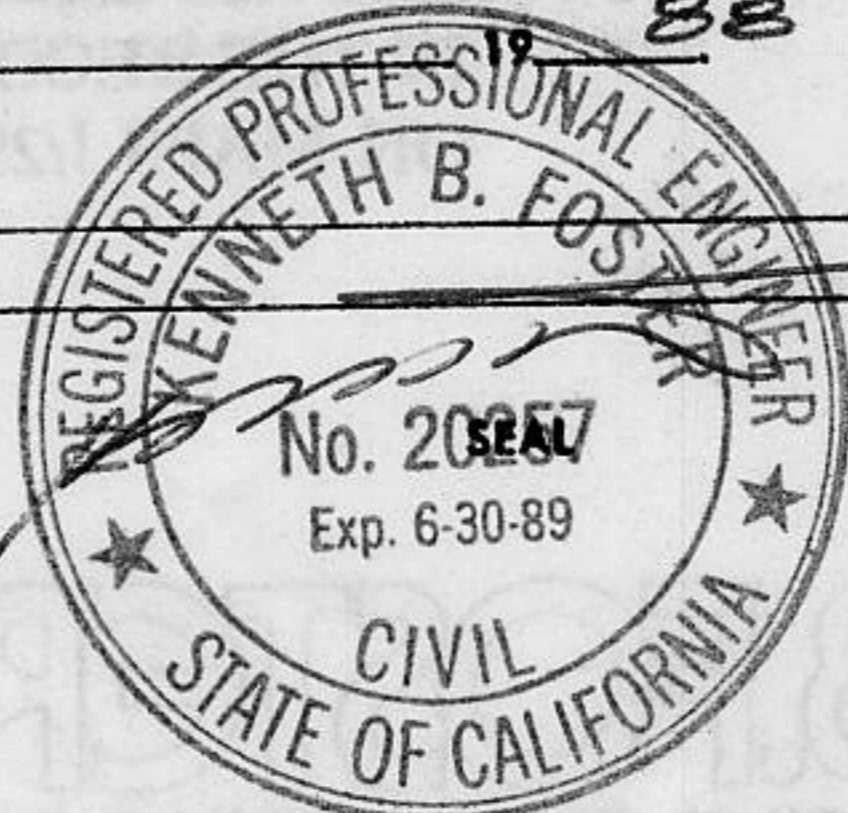
SEE EXHIBIT "A"

Book 2, CORNER RECORDS, PAGE 48

#### SURVEYOR'S CERTIFICATE

THIS CORNER RECORD WAS PREPARED BY ME OR UNDER MY DIRECTION IN CONFORMANCE WITH THE LAND SURVEYORS ACT ON 12-22 1988

SIGNED: \_\_\_\_\_  
L.S. or R.C.E. No.: \_\_\_\_\_



#### COUNTY SURVEYOR'S CERTIFICATE

THE CORNER RECORD WAS RECEIVED 12/27 1988 AND EXAMINED AND FILED 5/22 1991

BY: Bruce J. McDaniel  
TITLE: DEPUTY COUNTY SURVEYOR

DOCUMENT No. \_\_\_\_\_

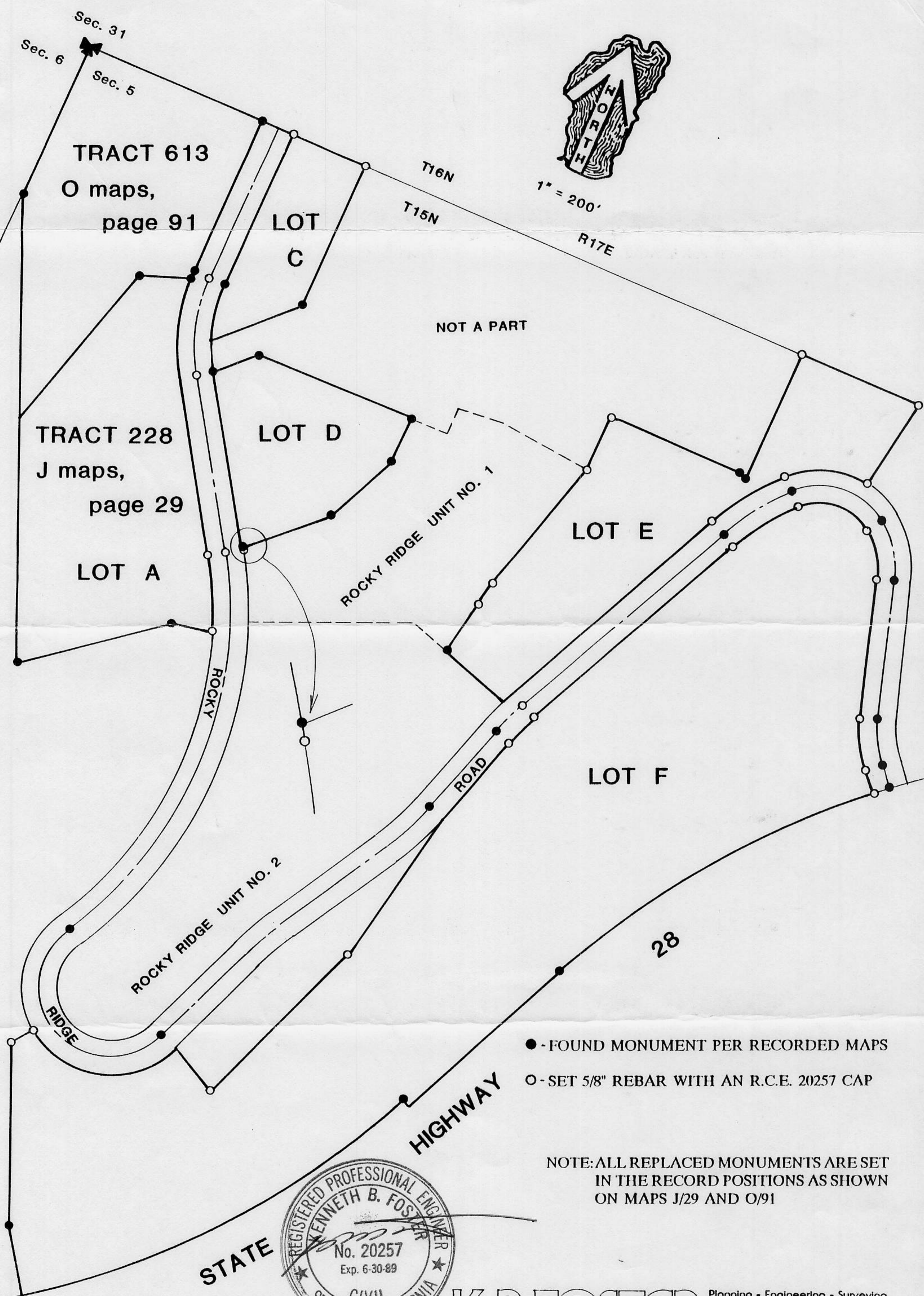
STATEMENT ON BACK OF SHEET

YES  NO



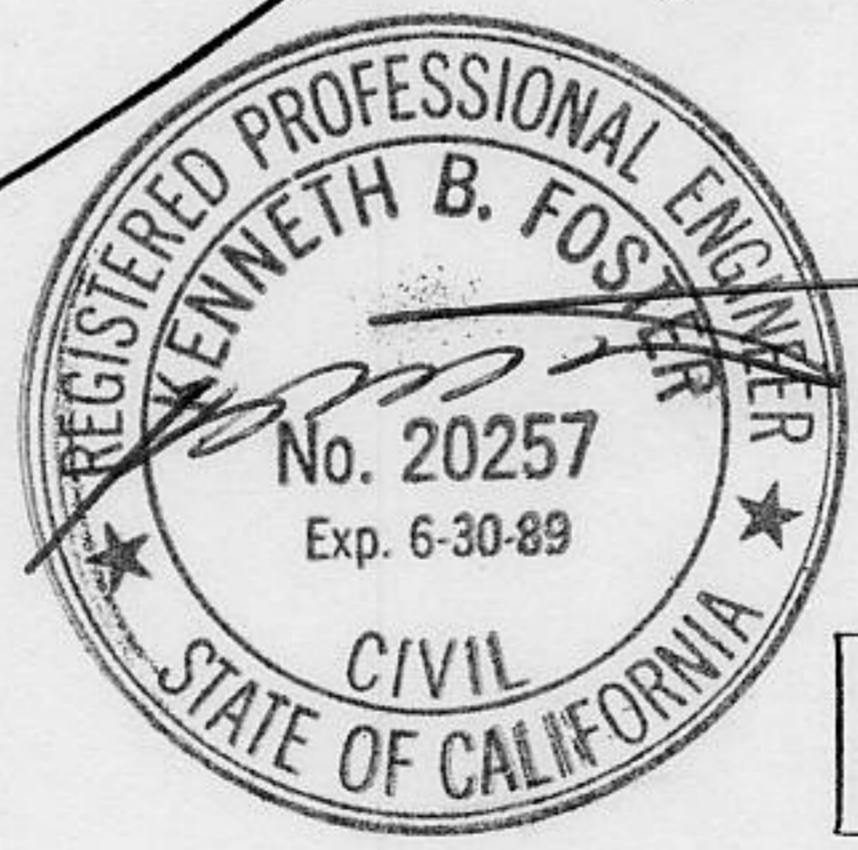
EXHIBIT A (Corner Record Attachment)

ROCKY RIDGE Unit No. 3



- - FOUND MONUMENT PER RECORDED MAPS
- - SET 5/8" REBAR WITH AN R.C.E. 20257 CAP

NOTE: ALL REPLACED MONUMENTS ARE SET IN THE RECORD POSITIONS AS SHOWN ON MAPS J/29 AND O/91



**K.B.FOSTER**  
CIVIL ENGINEERING INC.

Planning • Engineering • Surveying

P. O. Box 146  
Carnellan Bay, CA 95711  
(916) 546-3381

12/22/88 R.J.

88169