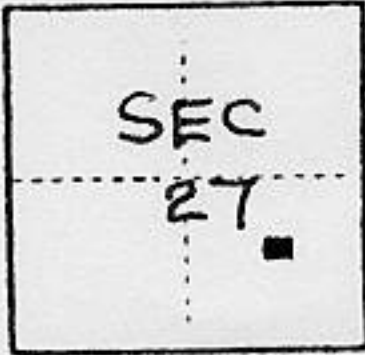


(For County Use Only)

### CORNER RECORD

COUNTY OF PLACER T. 17N R. 14 E MOUNT DIABLO MERIDIAN CALIFORNIA

CORNER TYPE: GOV'T. CORNER  MEANDER  RANCHO  CONTROL  OTHER   
CORNER IDENTIFICATION - DATE OF VISIT Jan 15 1991



CORNER - LEFT AS FOUND  FOUND AND TAGGED  REESTABLISHED OBLITERATED CORNER  REBUILT

PHYSICAL DESCRIPTION OF CORNER FOUND; EVIDENCE AND METHOD USED TO IDENTIFY OR REESTABLISH

- Found 1/2" Rebar per "G Maps - 1"
- ✱ Found 2"x2" Hub w/Tag "RLS 2089"

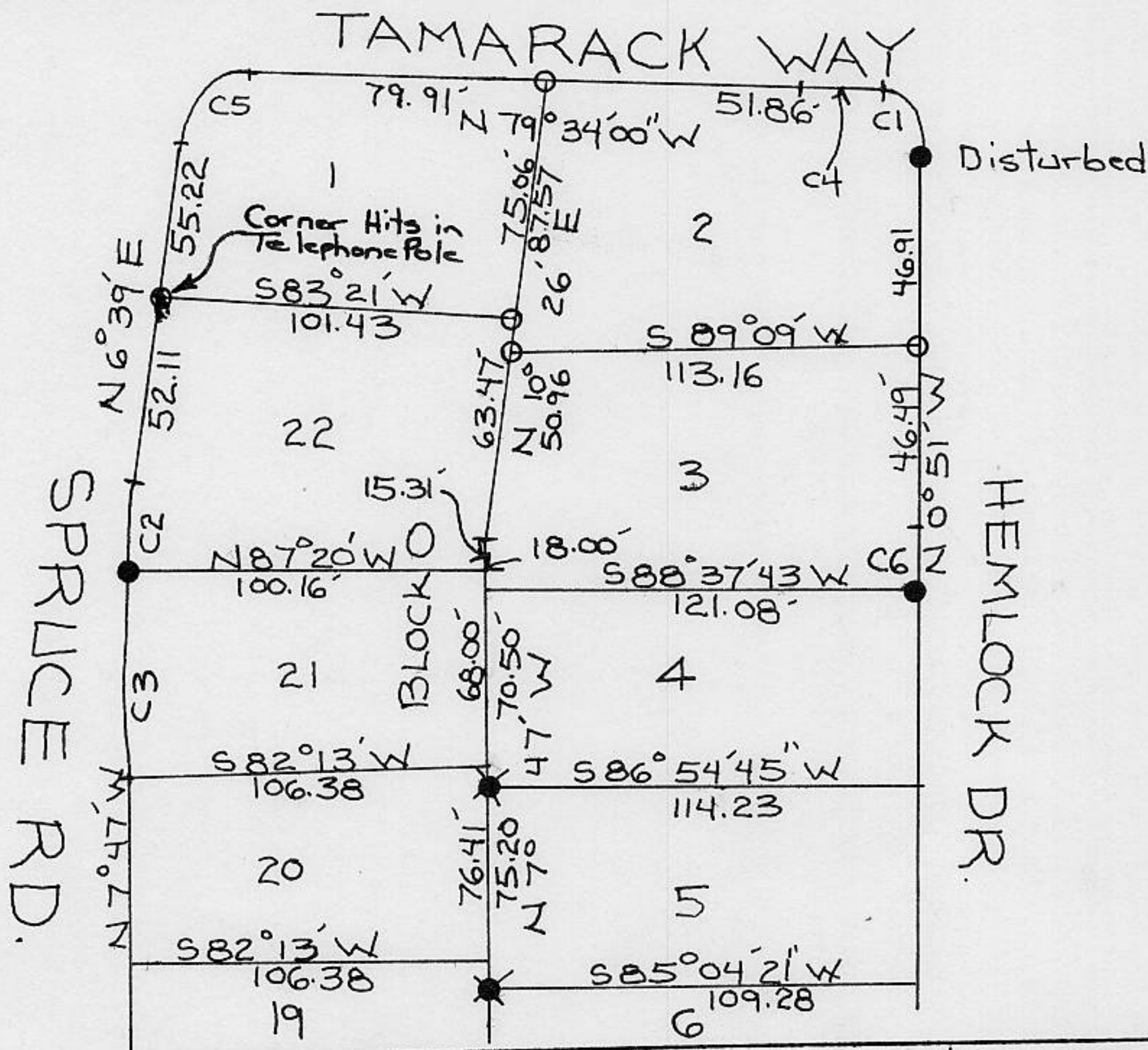
PHYSICAL DESCRIPTION OF MONUMENTS REBUILT OR PERPETUATED

- Set 1" I.P w/cap "LS5583"
- Marked Notch in Telephone Pole

CALIFORNIA COORDINATE SYSTEM ORDER: FIRST  SECOND  THIRD   
 STATIONS USED: NGS (USC & GS)  STATE  COUNTY  OTHER  STATION \_\_\_\_\_ STATION \_\_\_\_\_  
 ZONE \_\_\_\_\_ ELEVATION \_\_\_\_\_ NORTHINGS (Y) \_\_\_\_\_ EASTINGS (X) \_\_\_\_\_

(Fold)

SKETCH: (Include reference tie or witness points, remarks and topo of area)



Portion of Ice Lakes Subd. No. 2. BK. G, Maps, Pg. 1

- |  |   |
|--|---|
| C1 - R= 25<br>Δ= 81°47'24"<br>L= 35.68 | C4 - R= 448.81'<br>Δ= 3°04'24"<br>L= 24.07' |
| C2 - R= 475<br>Δ= 3°59'<br>L= 33.03'   | C5 - R= 2500<br>Δ= 93°47'<br>L= 40.92'      |
| C3 - R= 475<br>Δ= 10°27'<br>L= 86.63'  | C-6 - R= 2225<br>Δ= 0°31'17"<br>L= 20.25'   |

#### SURVEYOR'S CERTIFICATE

THIS CORNER RECORD WAS PREPARED BY ME OR UNDER MY DIRECTION IN CONFORMANCE WITH THE LAND SURVEYORS ACT ON Feb. 24, 1991

SIGNED: Michael J. Miller  
L.S. or R.C.E. No.: LS 5583



#### COUNTY SURVEYOR'S CERTIFICATE

THE CORNER RECORD WAS RECEIVED MAR 7 1991  
AND EXAMINED AND FILED MAR 29 1991

BY: [Signature]  
TITLE: DEPUTY COUNTY SURVEYOR

DOCUMENT No. \_\_\_\_\_

STATEMENT ON BACK OF SHEET

YES  NO

2-24-91

Book 2, Corner Records, Page 49