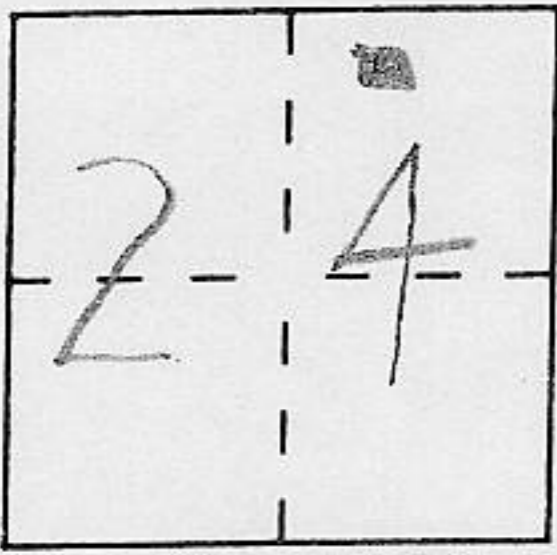


CORNER RECORD

Document Number _____

City of _____ County of PLACER, California

Brief Legal Description PORTION OF LOT 7, BLOCK B PINELAND SUBDIVISION
BOOK E, OF MAPS AT PAGE 8. P.C.R



CORNER TYPE

Government Corner Control
 Meander Property
 Rancho Other
 Date of Survey MAY 15, 1996

COORDINATES (Optional)

N. _____
 E. _____
 Zone _____ Datum _____
 Elev. _____

Corner — Left as found Found and tagged Established Reestablished Rebuilt

Identification and type of corner found: Evidence used to identify or procedure used to establish or reestablish the corner:

SEE SKETCH ON BACK

A description of the physical condition of the monument as found and as set or reset:

SEE SKETCH ON BACK

SURVEYOR'S STATEMENT

This Corner Record was prepared by me or under my direction in conformance with the Land Surveyors' Act on MAY 15, 1996.

Signed [Signature] (L.S.) or R.C.E. Number 3422

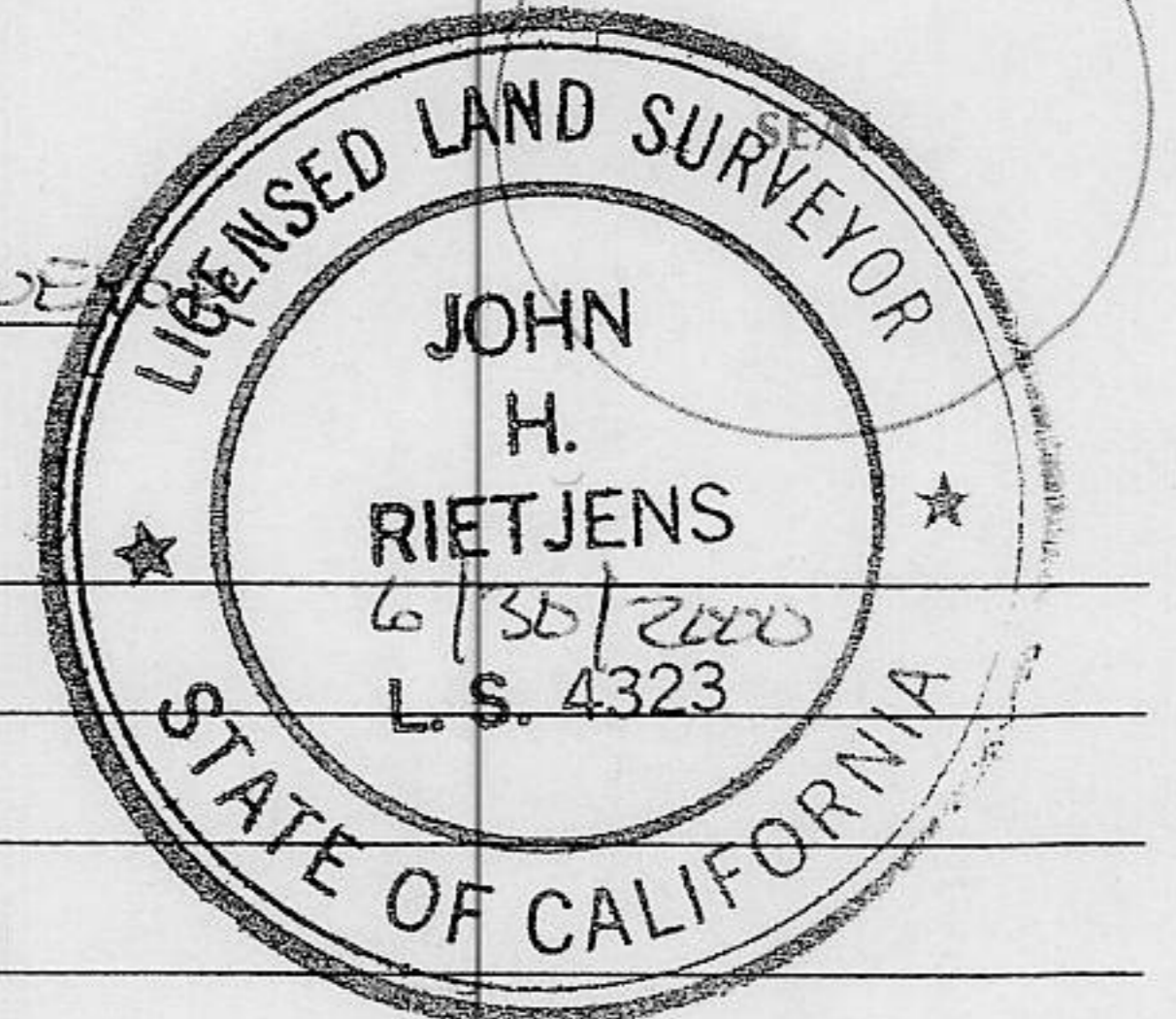


COUNTY SURVEYOR'S STATEMENT

This Corner Record was received FEB 5, 1997 and examined

and filed FEBRUARY 7, 1997.

Signed [Signature] Title COUNTY SURVEYOR



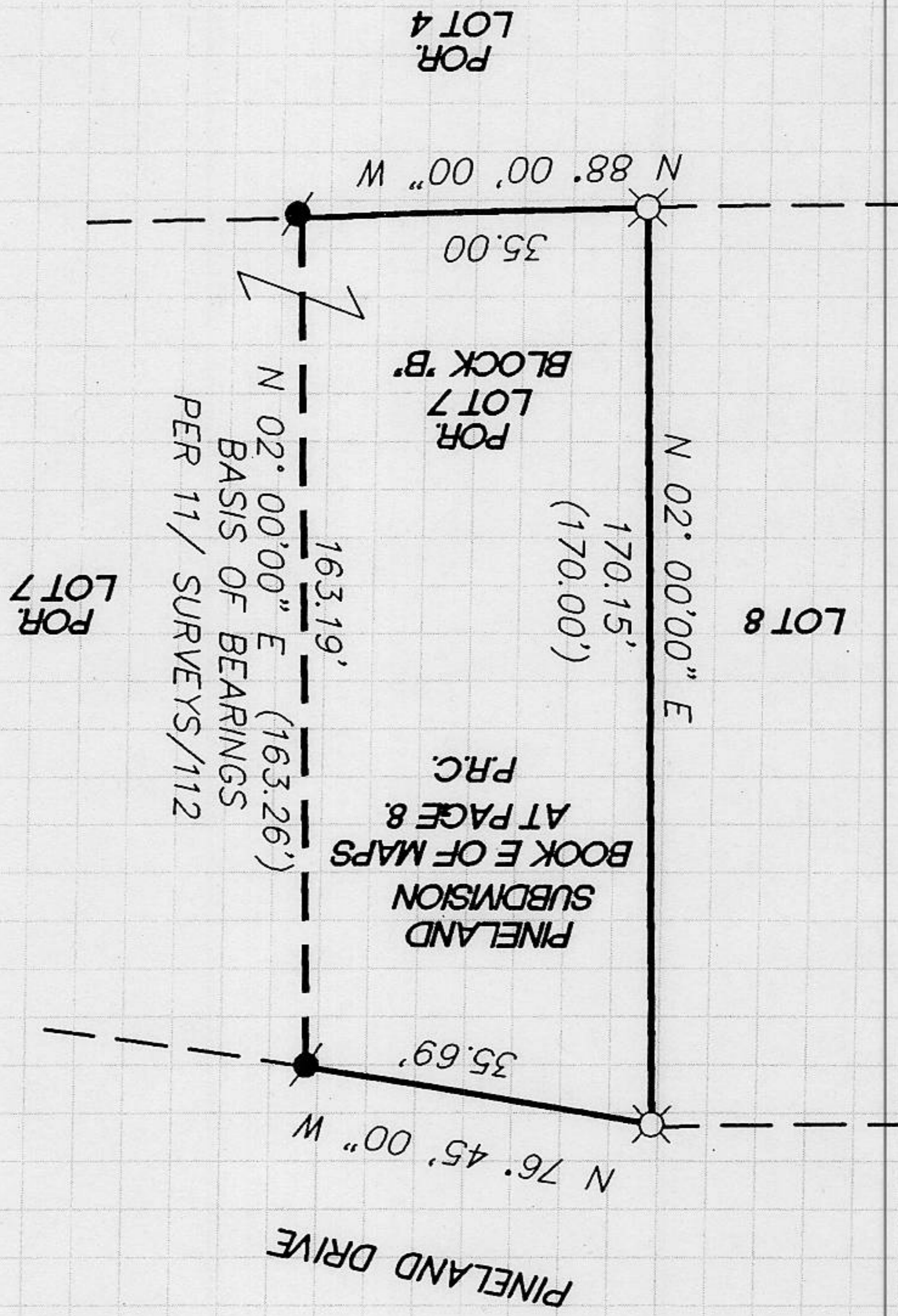
County Surveyor's Comment _____

BOOK 5 CORNER RECORDS PAGE 71

PLAT OF SURVEY

A POR. OF LOT 7, BLOCK "B" PINELAND SUB. AS FOUND IN BOOK E, OF MAPS AT PG. 8, P.C.R. ALSO LOCATED IN SECTION 24, TOWNSHIP 15 NORTH, RANGE 16 EAST, M.D.B. & M. COUNTY OF PLACER CALIFORNIA

SURVEY DATE : MAY 15, 1996



NOT TO SCALE



FOUND 5/8" REBAR W/ PLASTIC CAP L.S. 3422
 PER R.O.S. # 1418, BOOK 11 OF SURVEYS AT PAGE 112.

J/N 697.00

SET 5/8" REBAR W/ PLASTIC CAP L.S. 3422

BOOK 5 CORNER RECORDS PAGE 71