

**CORNER RECORD**

COUNTY OF PLACER T. 14 N. R. 17 E. M.D. M.D. MERIDIAN CALIFORNIA  
 CORNER TYPE: GOV'T. CORNER  MEANDER  RANCHO  CONTROL  OTHER   
 CORNER IDENTIFICATION - DATE OF VISIT OCTOBER 9 1989



\* DUE TO PAGE NUMBERING ERROR, SEE ALSO BOOK 3 CORNER RECORDS, PAGE 153.

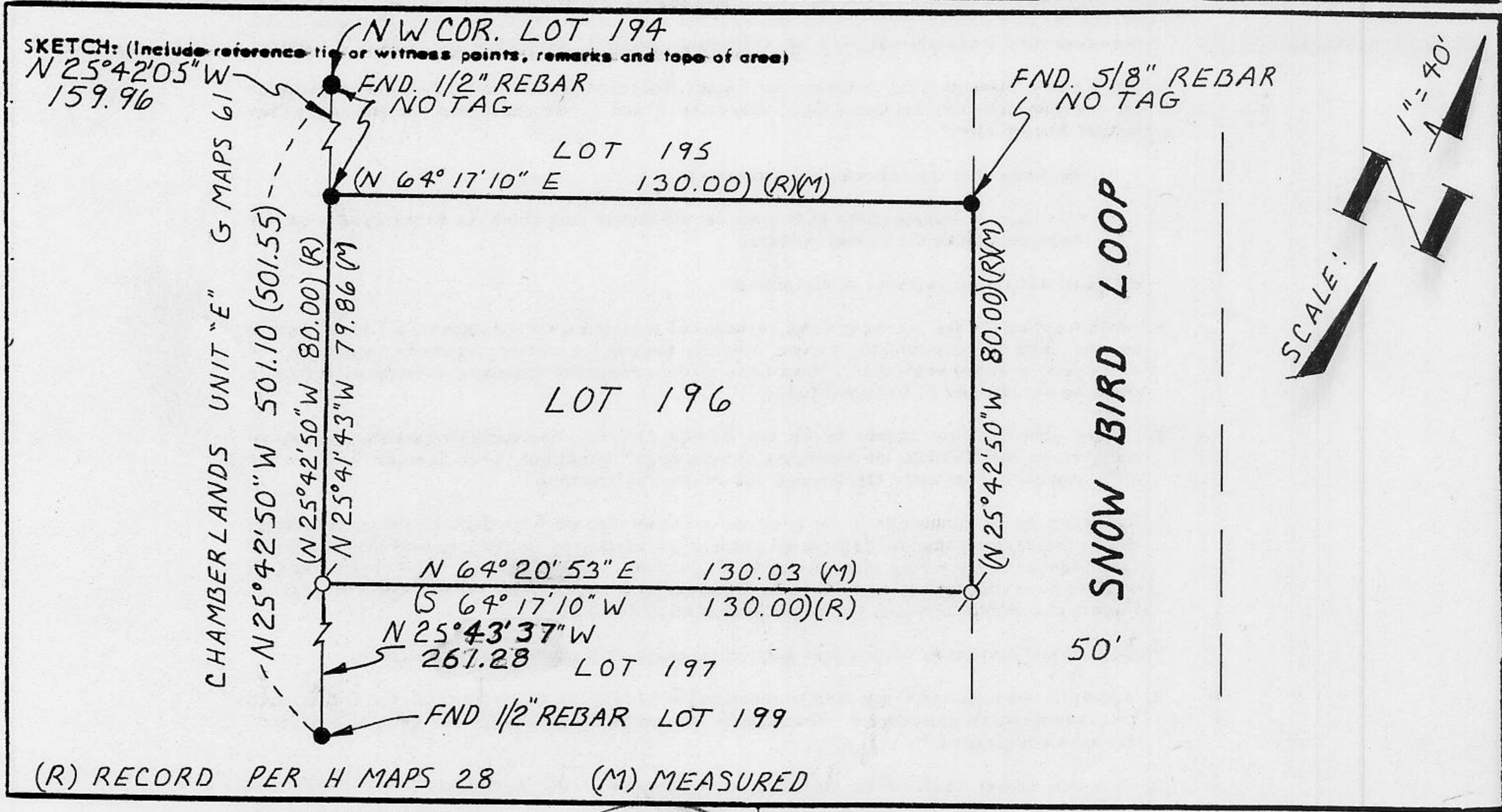
LOT 196 CHAMBERLANDS UNIT "F" H MAPS 28

CORNER - LEFT AS FOUND  FOUND AND TAGGED  REESTABLISHED OBLITERATED CORNER  REBUILT

PHYSICAL DESCRIPTION OF CORNER FOUND: EVIDENCE AND METHOD USED TO IDENTIFY OR REESTABLISH  
 ● FOUND AS NOTED

PHYSICAL DESCRIPTION OF MONUMENTS REBUILT OR PERPETUATED  
 ♂ SET 5/8" REBAR WITH YELLOW PLASTIC CAP STAMPED L.S. 3422

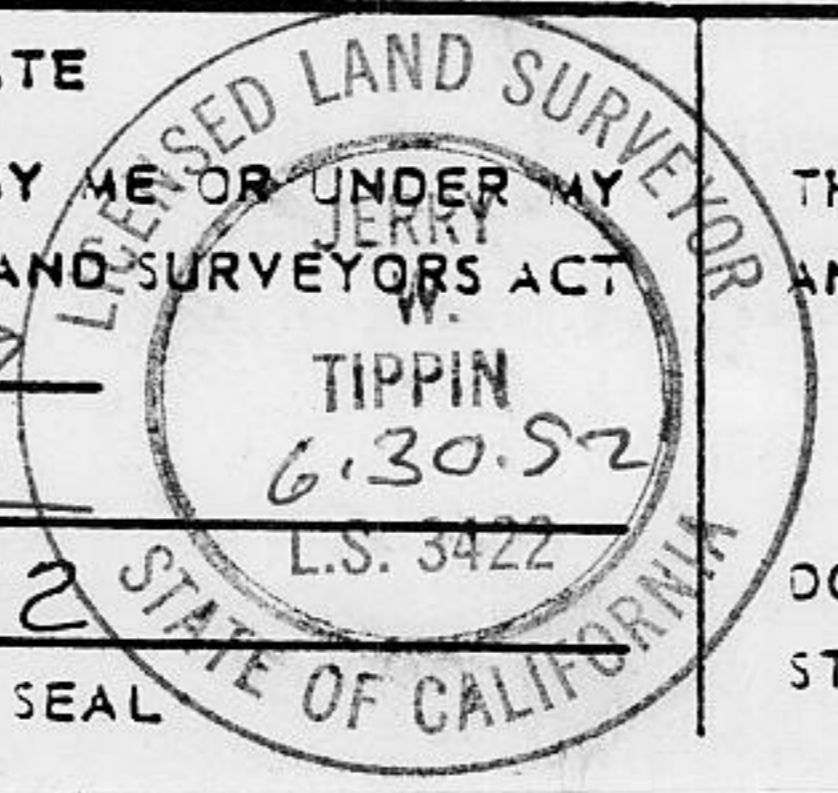
CALIFORNIA COORDINATE SYSTEM ORDER: FIRST  SECOND  THIRD  N/A  
 STATIONS USED: NGS (USC & GS)  STATE  COUNTY  OTHER  STATION \_\_\_\_\_ STATION \_\_\_\_\_  
 ZONE \_\_\_\_\_ ELEVATION \_\_\_\_\_ NORTHINGS (Y) \_\_\_\_\_ EASTINGS (X) \_\_\_\_\_



(R) RECORD PER H MAPS 28 (M) MEASURED

**SURVEYOR'S CERTIFICATE**

THIS CORNER RECORD WAS PREPARED BY ME OR UNDER MY DIRECTION IN CONFORMANCE WITH THE LAND SURVEYORS ACT ON NOV 7 1989  
 SIGNED: [Signature]  
 L.S. or R.C.E. No. L.S. 3422



**COUNTY SURVEYOR'S CERTIFICATE**

THIS CORNER RECORD WAS RECEIVED 11/9 1989 AND EXAMINED AND FILED 11/9 1989  
 BY: [Signature]  
 TITLE: DEPUTY COUNTY SURVEYOR

DOCUMENT No. \_\_\_\_\_ STATEMENT ON BACK OF SHEET YES  NO

BOOK 2 CORNER RECORDS, PAGE 14\*