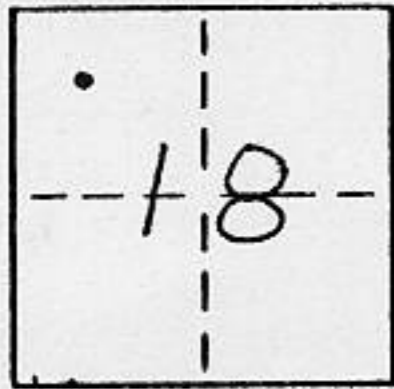


CORNER RECORD

COUNTY OF PLACER T. 14N R. 17E M.D. MERIDIAN CALIFORNIA

CORNER TYPE: GOV'T. CORNER MEANDER RANCHO CONTROL OTHER
 CORNER IDENTIFICATION - DATE OF VISIT 8-25 1989



* DUE TO PAGE NUMBERING ERROR ALSO SEE BOOK 3 CORNER RECORDS PAGE 156.

LOT 5, MCKINNEY ESTATES, UNIT No. 9, H MAPS 49

CORNER - LEFT AS FOUND FOUND AND TAGGED REESTABLISHED OBLITERATED CORNER REBUILT

PHYSICAL DESCRIPTION OF CORNER FOUND: EVIDENCE AND METHOD USED TO IDENTIFY OR REESTABLISH _____

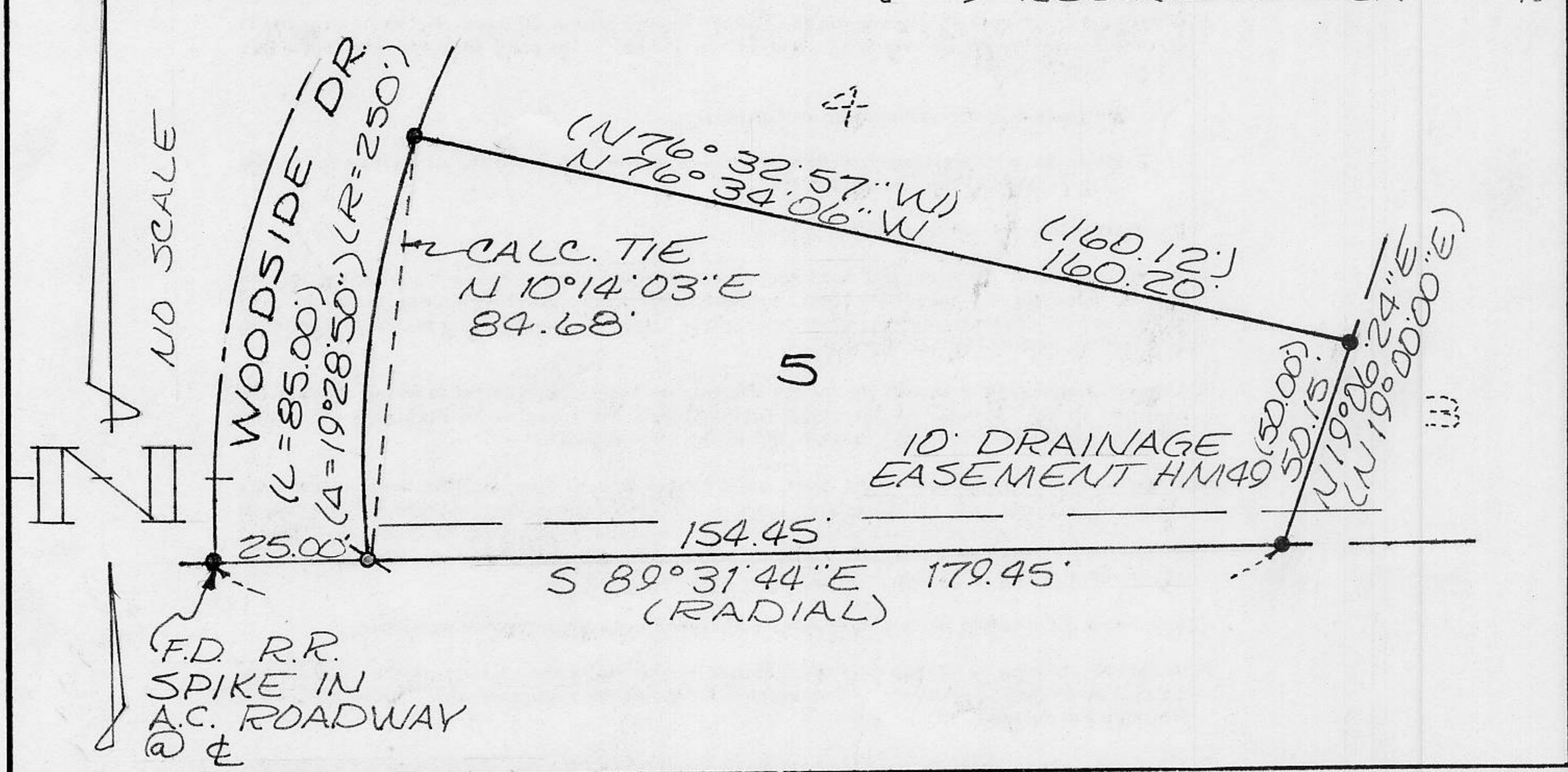
• FOUND 3/8" ϕ REBAR AT NORTHWEST, NORTHEAST AND SOUTHEAST CORNERS OF LOT 5, RESET WITH MONUMENTATION INDICATED BELOW IN ORIGINAL POSITION.

PHYSICAL DESCRIPTION OF MONUMENTS REBUILT OR PERPETUATED _____

• SET 5/8" ϕ REBAR WITH YELLOW PLASTIC CAP STAMPED L.S. 3422

CALIFORNIA COORDINATE SYSTEM ORDER: FIRST SECOND THIRD N/A
 STATIONS USED: NGS (USC & GS) STATE COUNTY OTHER STATION _____ STATION _____
 ZONE _____ ELEVATION _____ NORTHINGS (Y) _____ EASTINGS (X) _____

SKETCH: (Include reference tie or witness points, remarks and topo of area) () RECORD AS PER H M 49

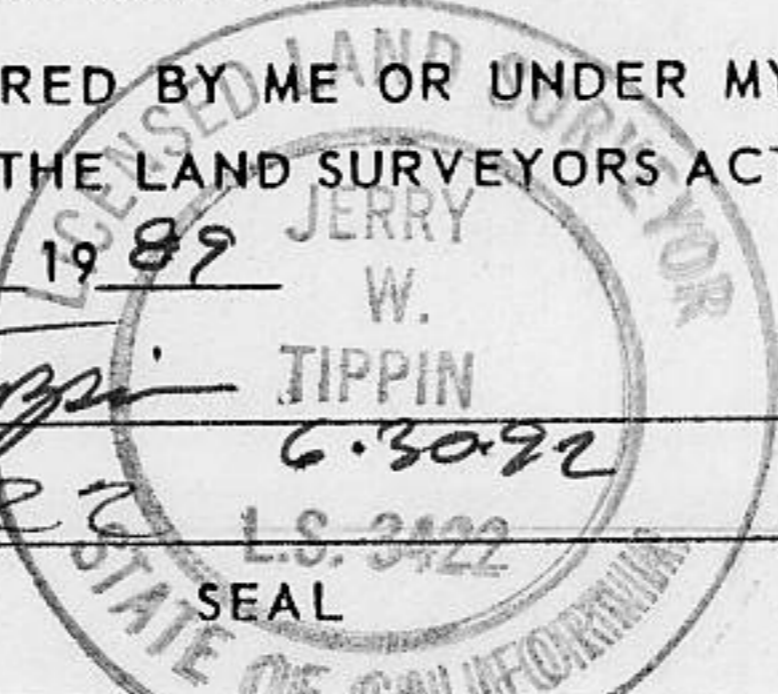


SURVEYOR'S CERTIFICATE

THIS CORNER RECORD WAS PREPARED BY ME OR UNDER MY DIRECTION IN CONFORMANCE WITH THE LAND SURVEYORS ACT ON Nov 6 1989

SIGNED: Jerry W. Tippin

L.S. or R.C.E. No. L.S. 3422



COUNTY SURVEYOR'S CERTIFICATE

THIS CORNER RECORD WAS RECEIVED 11/9 1989 AND EXAMINED AND FILED 11/9 1989

BY: John R. Ruggens
 TITLE: DEPUTY COUNTY SURVEYOR

DOCUMENT No. _____

STATEMENT ON BACK OF SHEET

J.N. 419.00 YES NO