

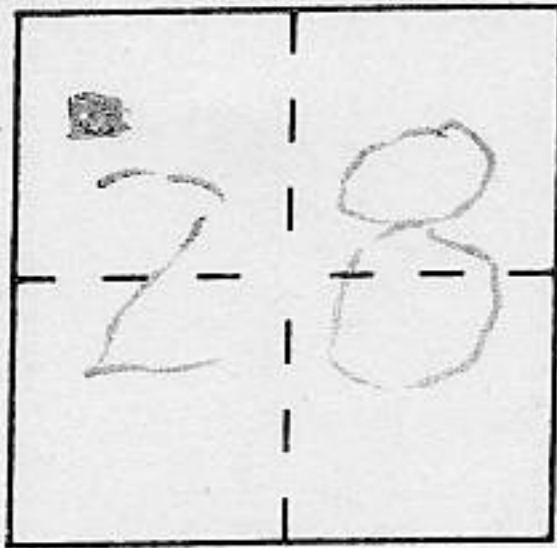
# CORNER RECORD

Document Number \_\_\_\_\_

City of \_\_\_\_\_

County of PLACER, California

Brief Legal Description LOT 29, HIDDEN LAKE SUBDIVISION, P.MAPS 14, P.C.R.



T. 16 N.  
R. 16 E.

### CORNER TYPE

Government Corner  Control   
 Meander  Property   
 Rancho  Other   
 Date of Survey OCT. 18 1996

### COORDINATES (Optional)

N. \_\_\_\_\_  
 E. \_\_\_\_\_  
 Zone \_\_\_\_\_ Datum \_\_\_\_\_  
 Elev. \_\_\_\_\_

Corner — Left as found  Found and tagged  Established  Reestablished  Rebuilt

Identification and type of corner found: Evidence used to identify or procedure used to establish or reestablish the corner:

SEE SKETCH BACK

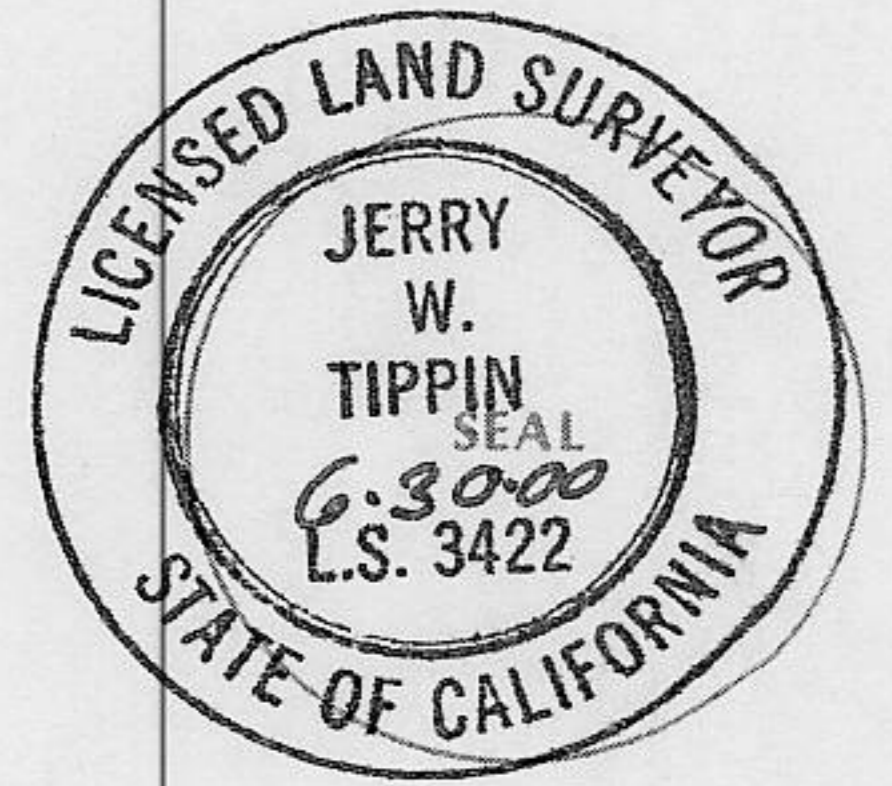
A description of the physical condition of the monument as found and as set or reset:

SEE SKETCH BACK

### SURVEYOR'S STATEMENT

This Corner Record was prepared by me or under my direction in conformance with the Land Surveyors' Act on DEC. 20 1996.

Signed [Signature] L.S. or R.C.E. Number 3422

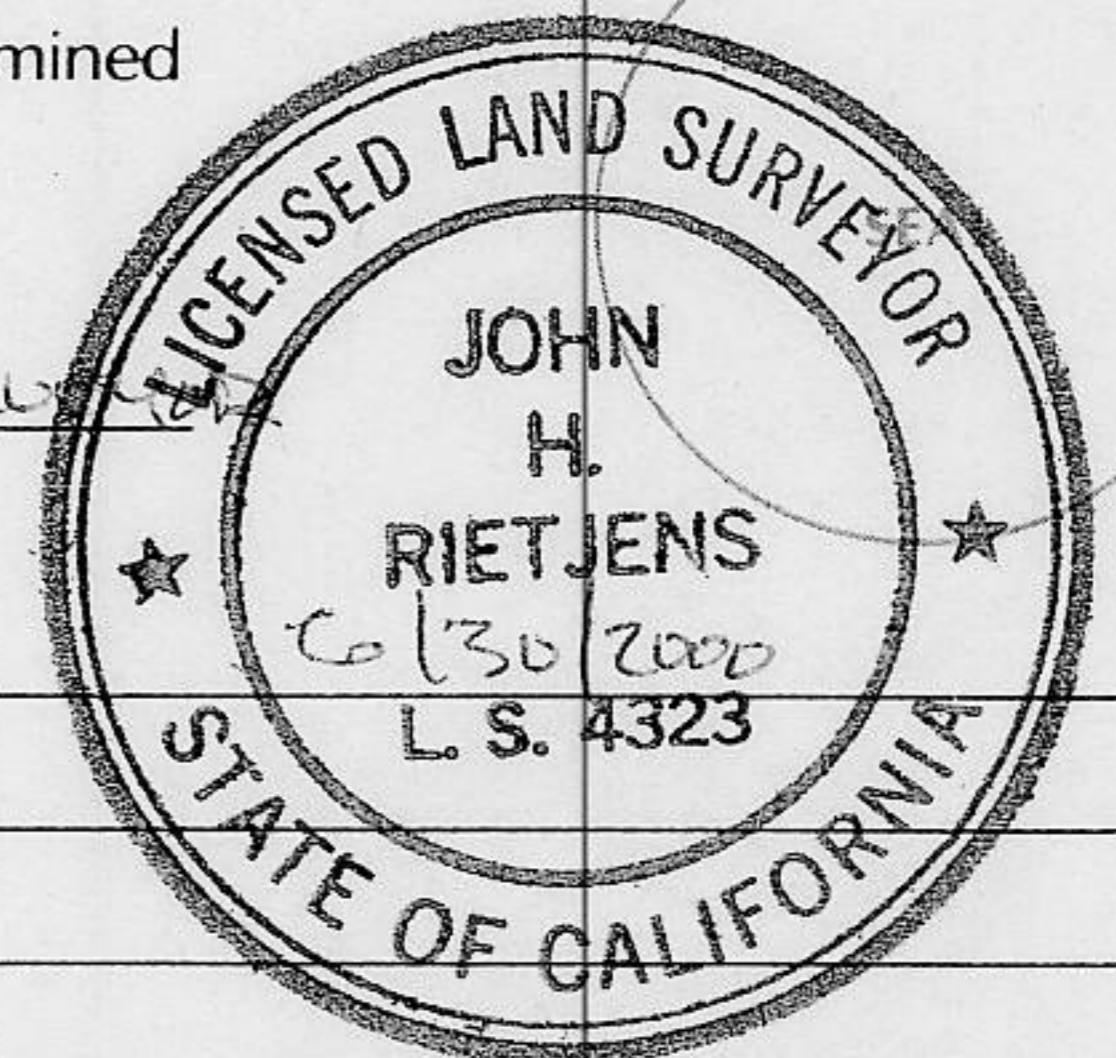


### COUNTY SURVEYOR'S STATEMENT

This Corner Record was received FEB 5 1997 and examined

and filed FEBRUARY 7 1997.

Signed [Signature] Title County Surveyor



County Surveyor's Comment \_\_\_\_\_

BOOK 5 CORNER RECORDS PAGE 66



# PLAT OF SURVEY

LOT 30, TRACT 605 HIDDEN LAKE SUB. BK. P, MAPS PG. 14, O.R.P.C.  
 IN SECTION 28, TOWNSHIP 16 NORTH, RANGE 16 EAST, M.D.B. & M.  
 COUNTY OF PLACER CALIFORNIA

SURVEY DATE : OCTOBER 18, 1996



NOT TO SCALE

BASIS OF BEARINGS

FD. 5/8" REBAR,  
NO TAG

LOT 30

N 03° 00' 00" E

60.00'

L.S. 3422

FD. 5/8" REBAR,  
PLASTIC CAP

N 90° 00' 00" W  
42.00'

N 03° 00' 00" E  
60.00'

N 87° 00' 00" W  
60.00'

N 03° 00' 00" E  
60.00'

FD. MONUMENT AS NOTED.

SET 5/8" REBAR W/ PLASTIC CAP L.S. 3422

SET MONUMENT AS NOTED