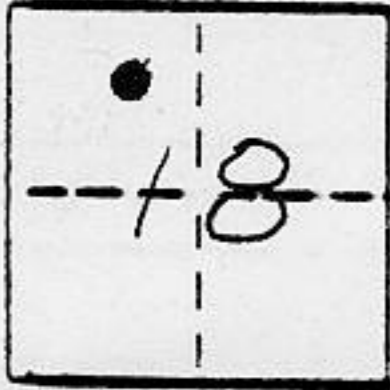


CORNER RECORD

COUNTY OF PLACER T. 14N R. 17E M.D.B. MERIDIAN CALIFORNIA

CORNER TYPE: GOV'T. CORNER MEANDER RANCHO CONTROL OTHER

CORNER IDENTIFICATION - DATE OF VISIT 10-12 1989



* DUE TO PAGE NUMBERING ERROR ALSO SEE BOOK 3 CORNER RECORDS PAGE 157.

LOT 11, MCKINNEY ESTATES UNIT No. 5, BKG, PG. 29

CORNER - LEFT AS FOUND FOUND AND TAGGED REESTABLISHED OBLITERATED CORNER REBUILT

PHYSICAL DESCRIPTION OF CORNER FOUND: EVIDENCE AND METHOD USED TO IDENTIFY OR REESTABLISH

● ~ FOUND 3/4" ϕ IRON PIPE, WITH YELLOW PLASTIC CAP, STAMPED L.S. 5549, UNLESS OTHERWISE INDICATED.

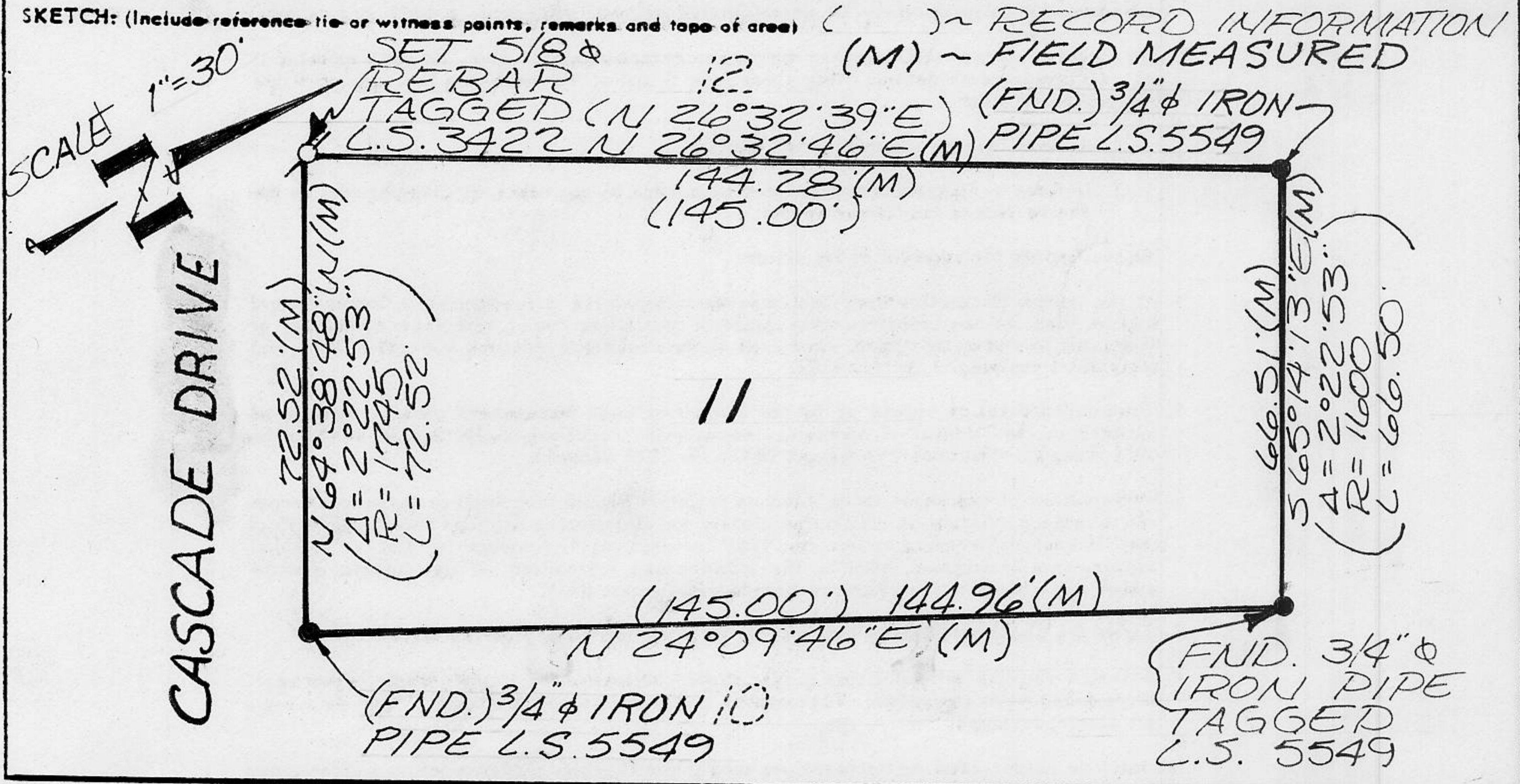
PHYSICAL DESCRIPTION OF MONUMENTS REBUILT OR PERPETUATED

○ ~ SET 5/8" ϕ REBAR, WITH YELLOW PLASTIC CAP STAMPED L.S. 3422, UNLESS OTHERWISE INDICATED.

CALIFORNIA COORDINATE SYSTEM ORDER: FIRST SECOND THIRD N/A

STATIONS USED: NGS (USC & GS) STATE COUNTY OTHER STATION _____ STATION _____

ZONE _____ ELEVATION _____ NORTHINGS (Y) _____ EASTINGS (X) _____

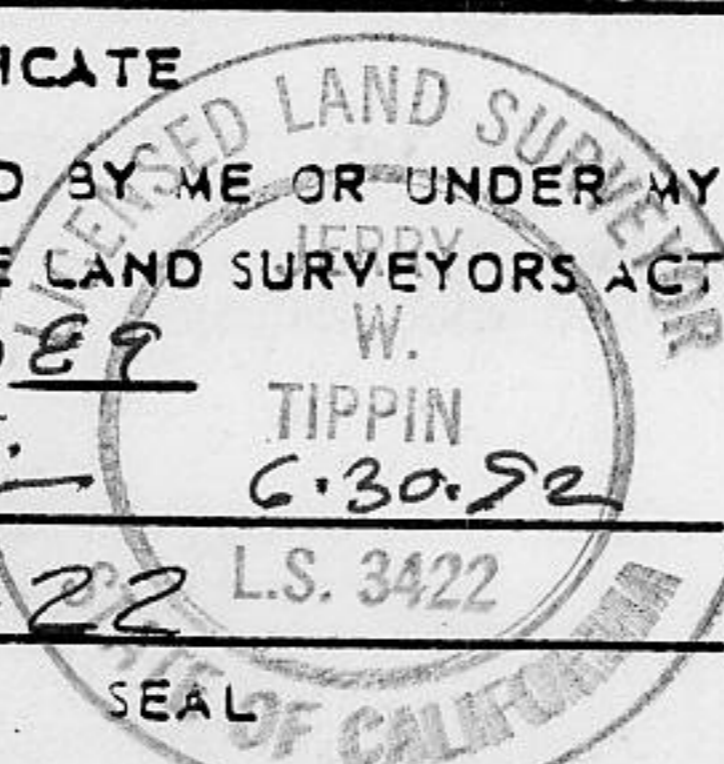


SURVEYOR'S CERTIFICATE

THIS CORNER RECORD WAS PREPARED BY ME OR UNDER MY DIRECTION IN CONFORMANCE WITH THE LAND SURVEYORS ACT ON Nov 6 1989

SIGNED: [Signature] 6.30.92

L.S. or R.C.E. No. L.S. 3422 L.S. 3422



COUNTY SURVEYOR'S CERTIFICATE

THIS CORNER RECORD WAS RECEIVED 11/9 1989 AND EXAMINED AND FILED 11/9 1989

BY: [Signature] TITLE: DEPUTY COUNTY SURVEYOR

DOCUMENT No. _____ STATEMENT ON BACK OF SHEET J.N. 447.00 ES NO

BOOK 2, CORNER RECORDS, PAGE 8*