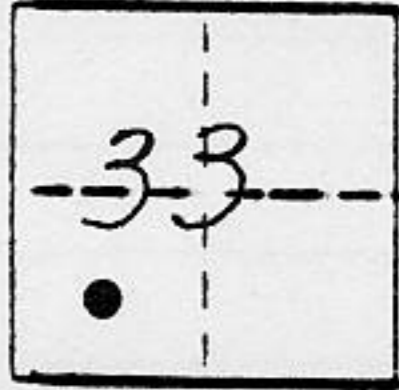


CORNER RECORD

COUNTY OF PLACER T. 16 N R. 17 E M.D.B. MERIDIAN CALIFORNIA

CORNER TYPE: GOV'T. CORNER MEANDER RANCHO CONTROL OTHER

CORNER IDENTIFICATION - DATE OF VISIT Oct. 12, 1989



LOT 4 DOLLAR POINT UNIT No. 1 BK. "F" PG. 73

CORNER - LEFT AS FOUND FOUND AND TAGGED REESTABLISHED OBLITERATED CORNER REBUILT

PHYSICAL DESCRIPTION OF CORNER FOUND: EVIDENCE AND METHOD USED TO IDENTIFY OR REESTABLISH

• ~ FOUND AS NOTED.

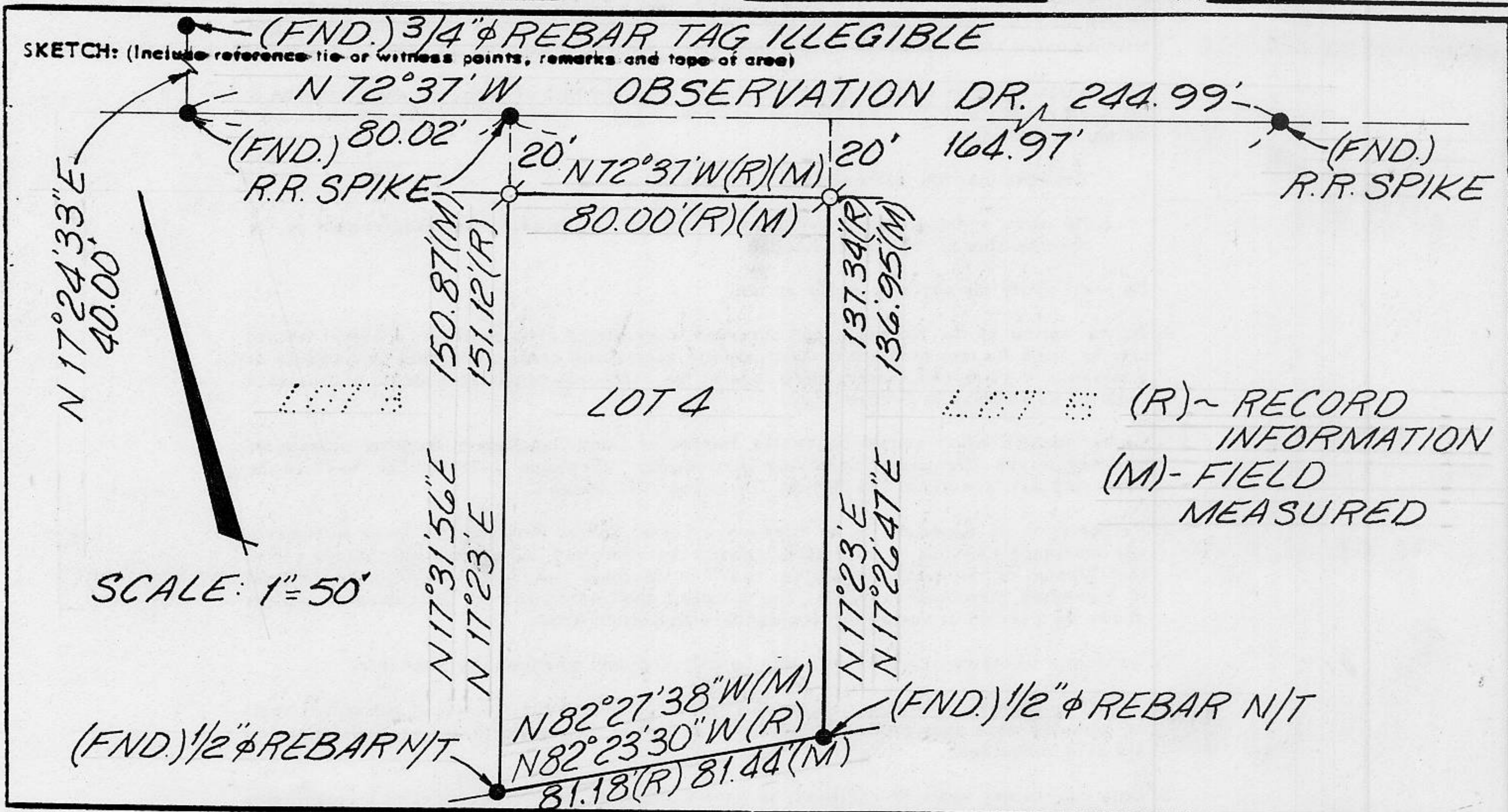
PHYSICAL DESCRIPTION OF MONUMENTS REBUILT OR PERPETUATED

φ ~ SET 5/8" φ REBAR w/ YELLOW PLASTIC CAP
STAMPED L.S. 3422

CALIFORNIA COORDINATE SYSTEM ORDER: FIRST SECOND THIRD N/A

STATIONS USED: NGS (USC & GS) STATE COUNTY OTHER STATION _____ STATION _____

ZONE _____ ELEVATION _____ NORTHINGS (Y) _____ EASTINGS (X) _____

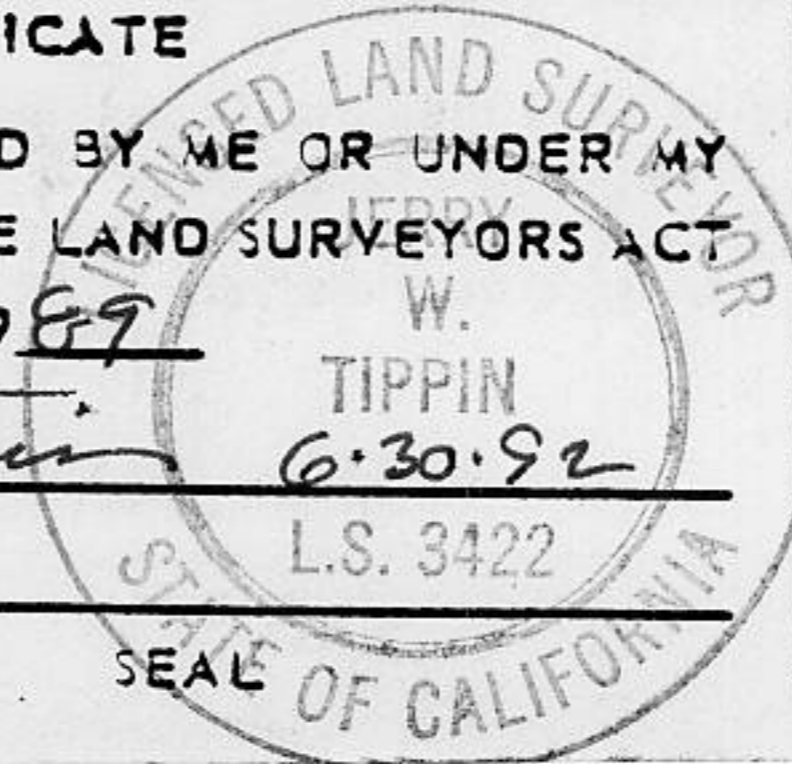


SURVEYOR'S CERTIFICATE

THIS CORNER RECORD WAS PREPARED BY ME OR UNDER MY DIRECTION IN CONFORMANCE WITH THE LAND SURVEYORS ACT ON Nov 6 1989

SIGNED: [Signature]

L.S. or R.C.E. No. L.S. 3422



COUNTY SURVEYOR'S CERTIFICATE

THIS CORNER RECORD WAS RECEIVED AND EXAMINED AND FILED 11/9 1989

BY [Signature]

TITLE: DEPUTY COUNTY SURVEYOR

DOCUMENT No. _____

STATEMENT ON BACK OF SHEET

J.N. 445.00 ES NO

BOOK 2, CORNER RECORDS PAGE 11