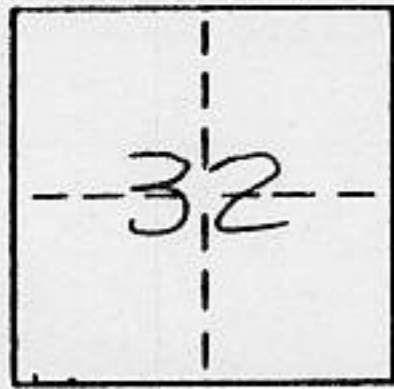


# CORNER RECORD

COUNTY OF PLACER T. 16N R. 17E N.D. MERIDIAN CALIFORNIA

CORNER TYPE: GOV'T. CORNER  MEANDER  RANCHO  CONTROL  OTHER   
 CORNER IDENTIFICATION - DATE OF VISIT 8-24 1989



LOT 53, LAKE FOREST VILLAGE UNIT NO. 2, H.M. 100

CORNER - LEFT AS FOUND  FOUND AND TAGGED  REESTABLISHED OBLITERATED CORNER  REBUILT

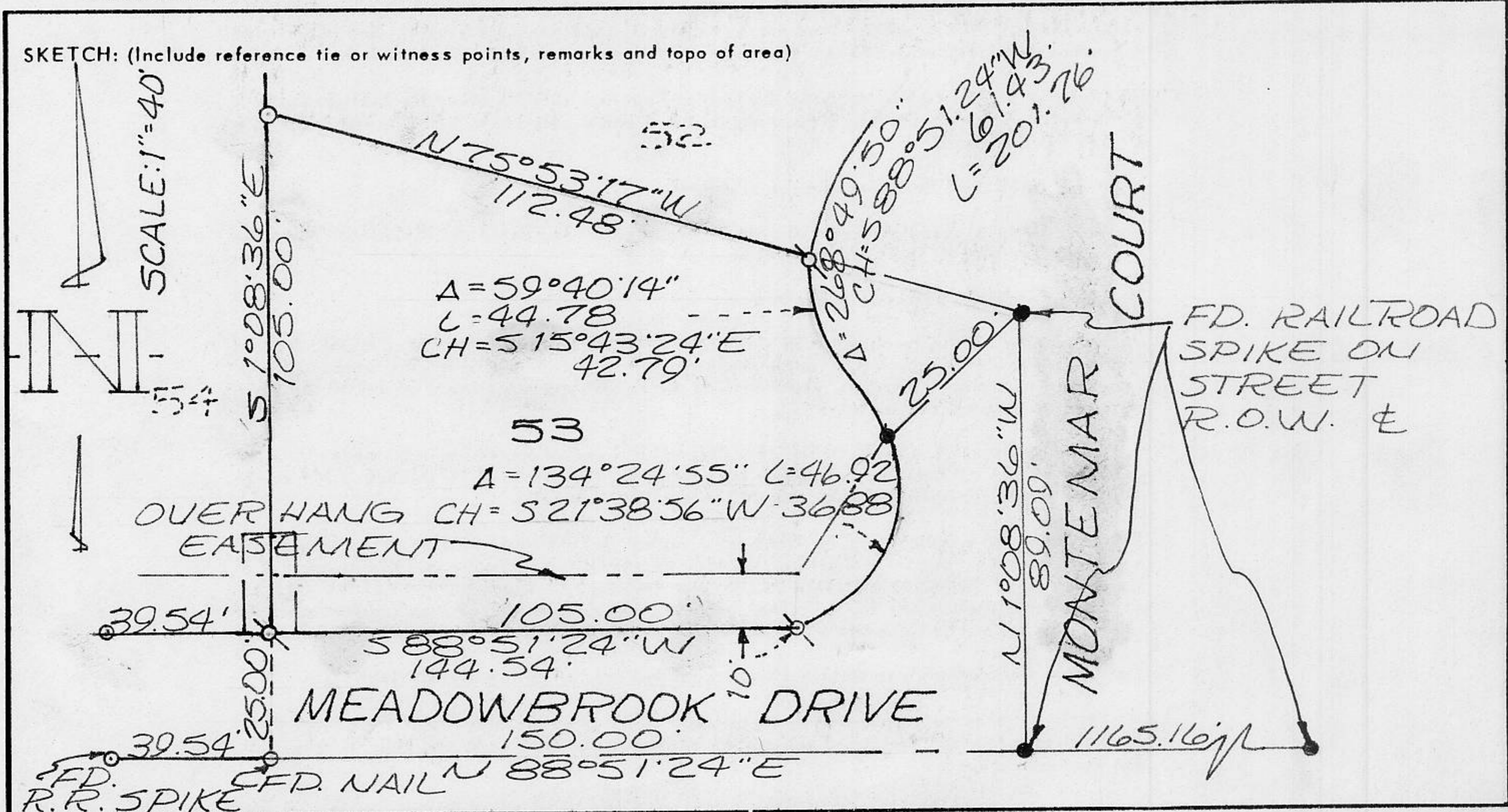
PHYSICAL DESCRIPTION OF CORNER FOUND: EVIDENCE AND METHOD USED TO IDENTIFY OR REESTABLISH \_\_\_\_\_

● FOUND 1/2" Ø IRON PIN WITH A COPPER SLEEVE STAMPED  
L.S. 2515, UNLESS OTHERWISE INDICATED.

PHYSICAL DESCRIPTION OF MONUMENTS REBUILT OR PERPETUATED \_\_\_\_\_

● SET 5/8" Ø REBAR WITH YELLOW PLASTIC CAP STAMPED  
L.S. 3422

CALIFORNIA COORDINATE SYSTEM ORDER: FIRST  SECOND  THIRD  N/A  
 STATIONS USED: NGS (USC & GS)  STATE  COUNTY  OTHER  STATION \_\_\_\_\_ STATION \_\_\_\_\_  
 ZONE \_\_\_\_\_ ELEVATION \_\_\_\_\_ NORTHINGS (Y) \_\_\_\_\_ EASTINGS (X) \_\_\_\_\_

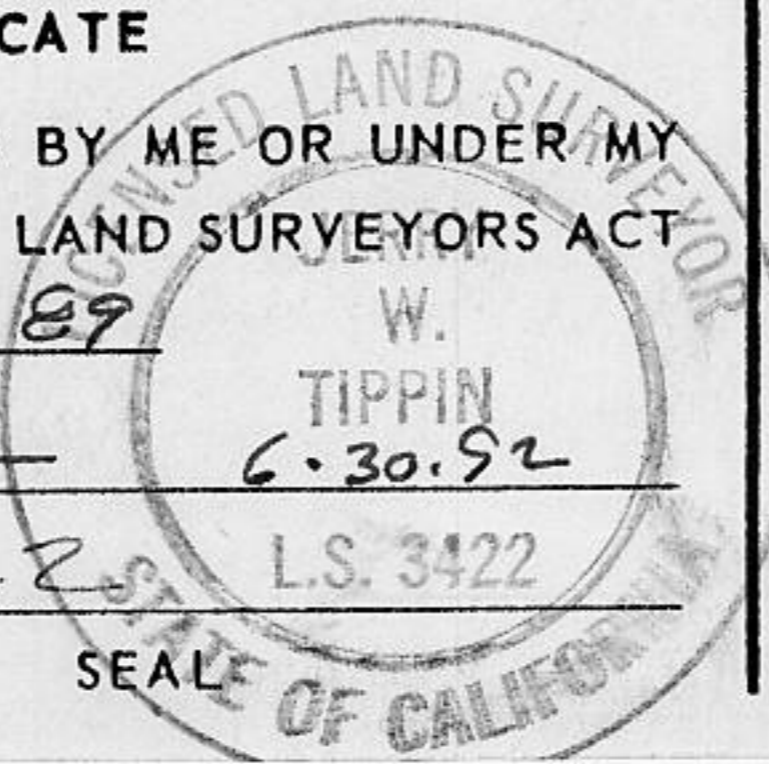


### SURVEYOR'S CERTIFICATE

THIS CORNER RECORD WAS PREPARED BY ME OR UNDER MY DIRECTION IN CONFORMANCE WITH THE LAND SURVEYORS ACT ON Nov 6 1989

SIGNED: \_\_\_\_\_

L.S. or R.C.E. No. U.S. 3422



### COUNTY SURVEYOR'S CERTIFICATE

THIS CORNER RECORD WAS RECEIVED AND EXAMINED AND FILED 11/9 1989

BY: John Ruggers  
 TITLE: DEPUTY COUNTY SURVEYOR

DOCUMENT No. \_\_\_\_\_

STATEMENT ON BACK OF SHEET YES  NO

\$11,418.00

BOOK 2, CORNER RECORDS, PAGE 12