

CORNER RECORD

Document Number _____

City of _____ County of PLACER, California

Brief Legal Description LOT 7, CALEDONIA TRACT SUBDIVISION, D/MAPS/91



CORNER TYPE

Government Corner Control
 Meander Property
 Rancho Other
 Date of Survey _____

COORDINATES (Optional)

N. _____
 E. _____
 Zone _____ Datum _____
 Elev. _____

T.16.N.R.17E.M.D.B.M.

Corner - Left as found Found and tagged Established Reestablished Rebuilt

Identification and type of corner found: Evidence used to identify or procedure used to establish or reestablish the corner:

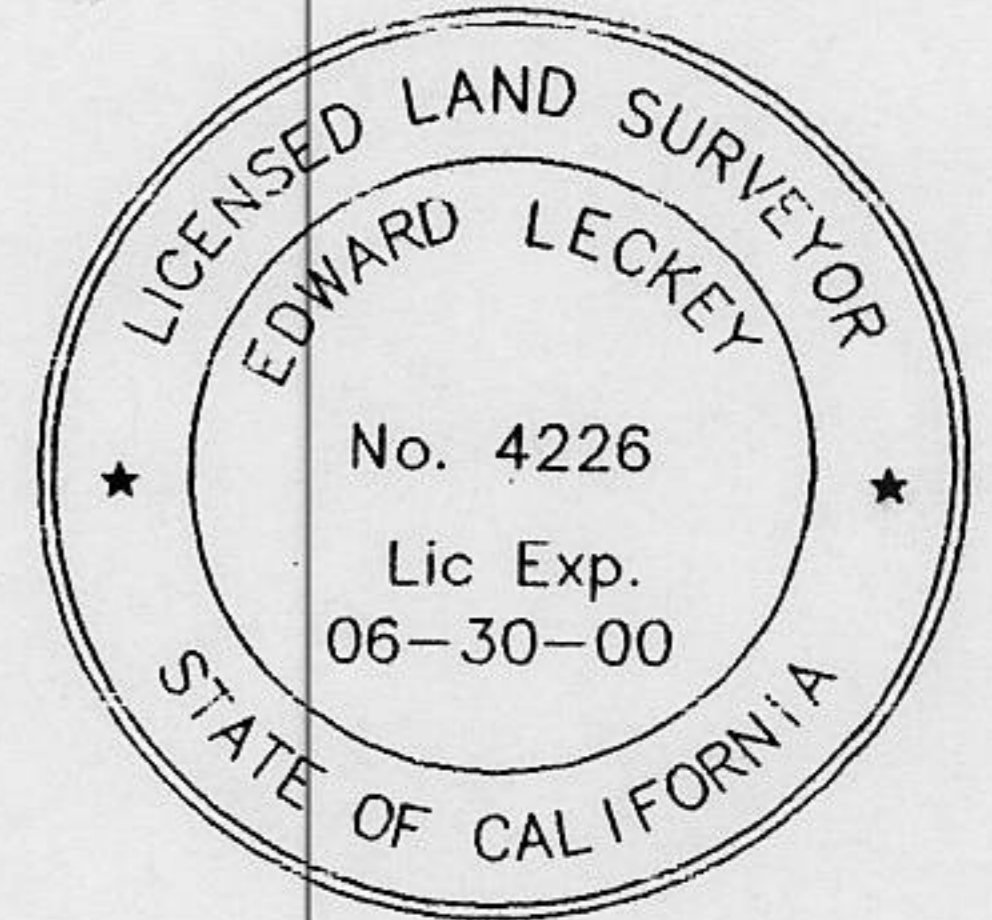
- ① INDICATES FOUND 5/8" REBAR W/2" ALUMINUM CAP L.S.5886
- ② INDICATES FOUND 1/2" REBAR W/NO TAG (BENT)

A description of the physical condition of the monument as found and as set or reset:

SURVEYOR'S STATEMENT

This Corner Record was prepared by me or under my direction in conformance with the Land Surveyors' Act on 29 Nov 1996

Signed Edward Leckey L.S. Number L.S. 4226



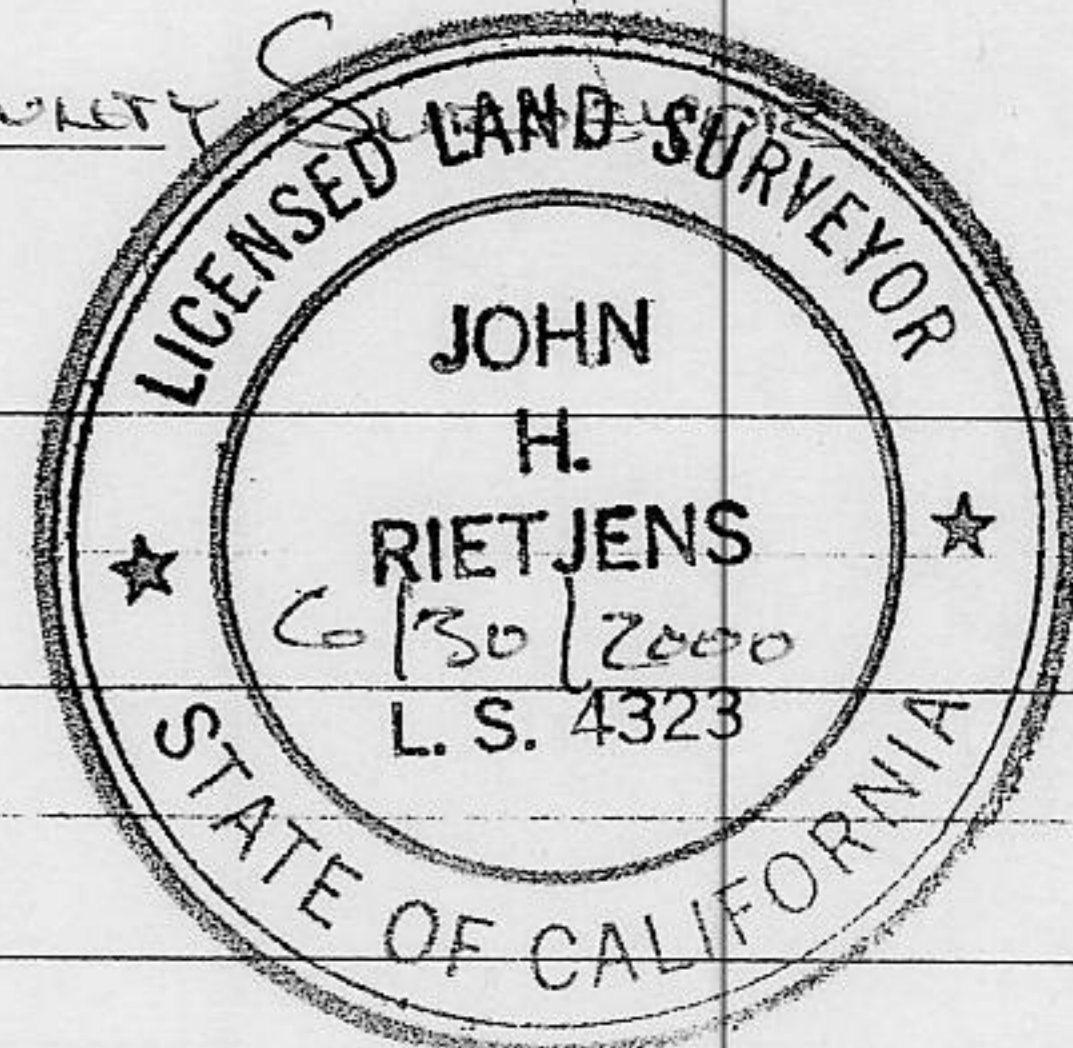
COUNTY SURVEYOR'S STATEMENT

This Corner Record was received DECEMBER 5 1996 and examined and filed DECEMBER 11 1996.

Signed John Rietjens Title DEPUTY COUNTY SURVEYOR

SEAL

County Surveyor's Comment: _____



BOOK 5 CORNER RECORDS PAGE 61



SCALE - 1" = 40'

NORTH ANGLE POINT
CORNER LOT 10

LOT 18
BK 4 COR. REC. PG 2

LOT 17

N53°00'00"E 285.31'(M)
N53°00'39"E 285.31'(M)
N53°00'39"E 210.38'(M)

LOT 8
BK 3 COR. REC. PG 199

FND. 1/2" REBAR W/
TAG-STAMP ILLEGIBLE
BEARS N71°14'34"E
0.52' FROM RECORD
POSITION(BENT)

N53°00'00"E 75.00'(M)
N53°00'39"E 74.93'(M)
54.95'(M)

LOT 7
AREA = 8618 S.F.±

S57°00'00"E 15.00'(M)
S57°00'12"E 14.97'(M)

LOT 6

BEARS N48°43'02"W
1.83' FROM RECORD
POSITION(BENT)

SET 5/8"x18" REBAR
W/CAP L.S.4226

BASIS OF BEARING
N53°00'00"E 224.92'(M)
STATE HIGHWAY 28
80.00' R.O.W.

CALEDONIA CIRCLE

75.00'(M)
N53°00'00"E 71.44'(M)
N53°00'00"E 71.45'(M)

S57°00'00"E 11.92'(M)

NOTE:
(I) D/MAPS/91
(M) MEASURED

FND. 6X6 HIGHWAY
MONUMENT