

**CORNER RECORD**

COUNTY OF PLACER T. 16N R. 17E MDB MERIDIAN CALIFORNIA

CORNER TYPE: GOV'T. CORNER  MEANDER  RANCHO  CONTROL  OTHER   
 CORNER IDENTIFICATION - DATE OF VISIT AUG. 10, 1989



LOT 192, FULTON ACRES UNIT 3, M.O.R. BK. F, PG. 32

CORNER - LEFT AS FOUND  FOUND AND TAGGED  REESTABLISHED OBLITERATED CORNER  REBUILT

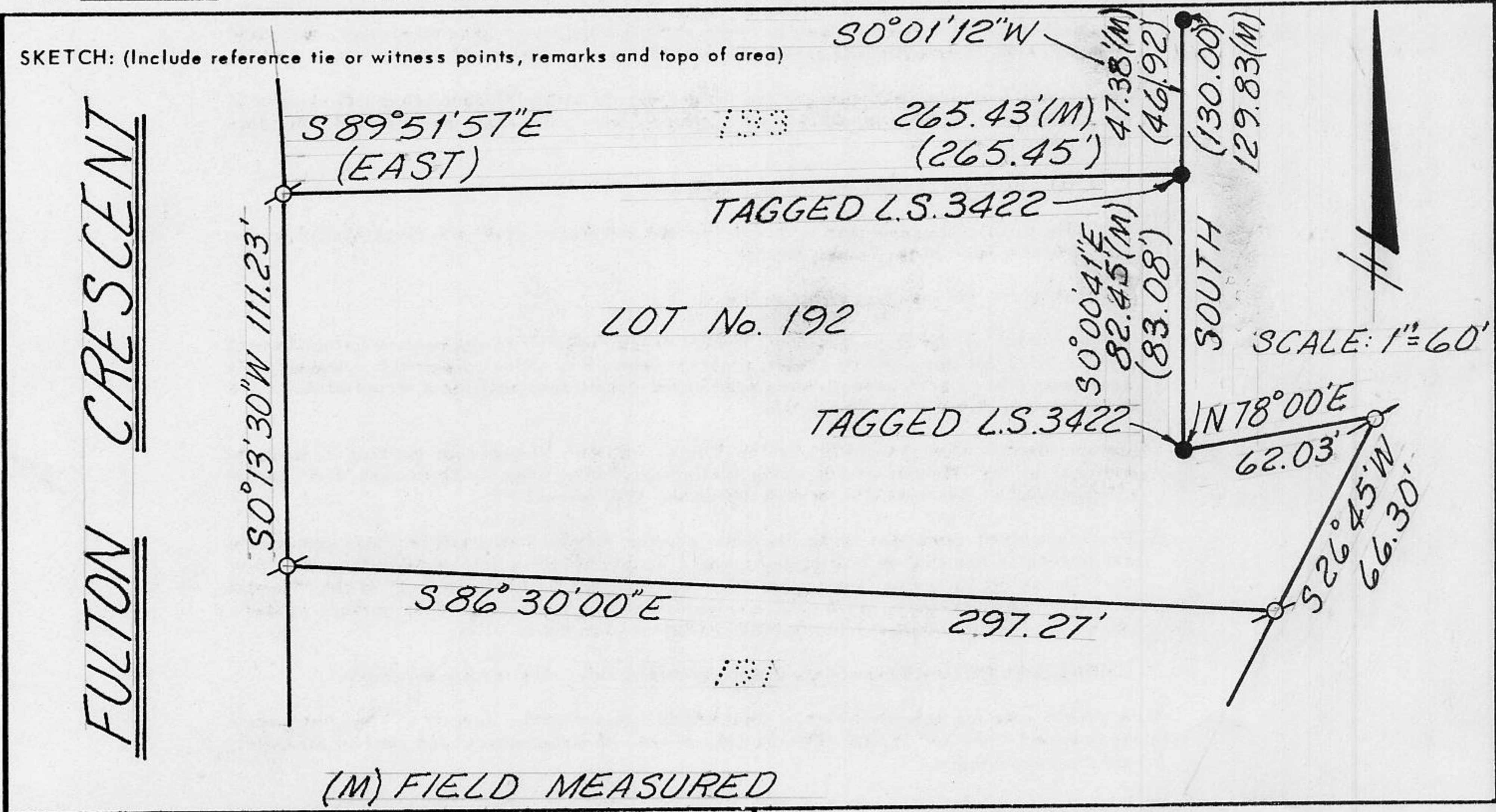
PHYSICAL DESCRIPTION OF CORNER FOUND: EVIDENCE AND METHOD USED TO IDENTIFY OR REESTABLISH

• ~ FOUND 1/2" REBAR

PHYSICAL DESCRIPTION OF MONUMENTS REBUILT OR PERPETUATED

σ ~ SET 5/8" ϕ REBAR, WITH YELLOW PLASTIC CAP L.S. 3422

CALIFORNIA COORDINATE SYSTEM ORDER: FIRST  SECOND  THIRD  N/A  
 STATIONS USED: NGS (USC & GS)  STATE  COUNTY  OTHER  STATION \_\_\_\_\_ STATION \_\_\_\_\_  
 ZONE \_\_\_\_\_ ELEVATION \_\_\_\_\_ NORTHINGS (Y) \_\_\_\_\_ EASTINGS (X) \_\_\_\_\_

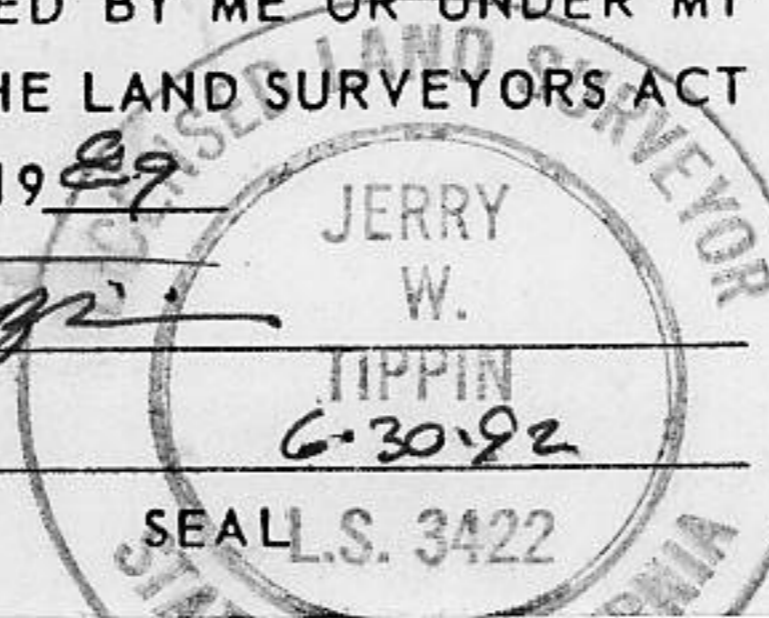


**SURVEYOR'S CERTIFICATE**

THIS CORNER RECORD WAS PREPARED BY ME OR UNDER MY DIRECTION IN CONFORMANCE WITH THE LAND SURVEYORS ACT ON NOV 6 1989

SIGNED: [Signature]

L.S. or R.C.E. No. LS 3422



**COUNTY SURVEYOR'S CERTIFICATE**

THIS CORNER RECORD WAS RECEIVED 11/9 1989 AND EXAMINED AND FILED 11/9 1989

BY: John Ruffens  
 TITLE: DEPUTY COUNTY SURVEYOR

DOCUMENT No. \_\_\_\_\_ STATEMENT ON BACK OF SHEET JN 413.00 YES  NO

BOOK 2, CORNER RECORDS PAGE 13