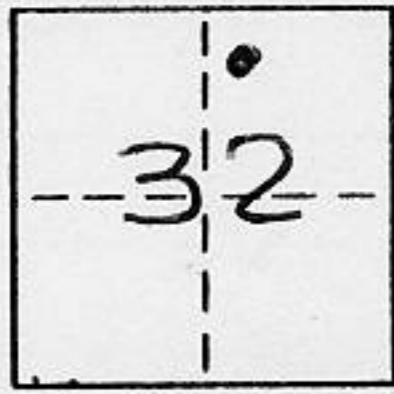


CORNER RECORD

COUNTY OF PLACER T. 16N R. 17E M.D.B. & MERIDIAN CALIFORNIA

CORNER TYPE: GOV'T. CORNER MEANDER RANCHO CONTROL OTHER
 CORNER IDENTIFICATION - DATE OF VISIT 7-27 1989



BLOCK "D"
 LOT 18, HIGHLANDS No. 3, M.O.R. BK. G, PG. 38

CORNER - LEFT AS FOUND FOUND AND TAGGED REESTABLISHED OBLITERATED CORNER REBUILT

PHYSICAL DESCRIPTION OF CORNER FOUND: EVIDENCE AND METHOD USED TO IDENTIFY OR REESTABLISH _____

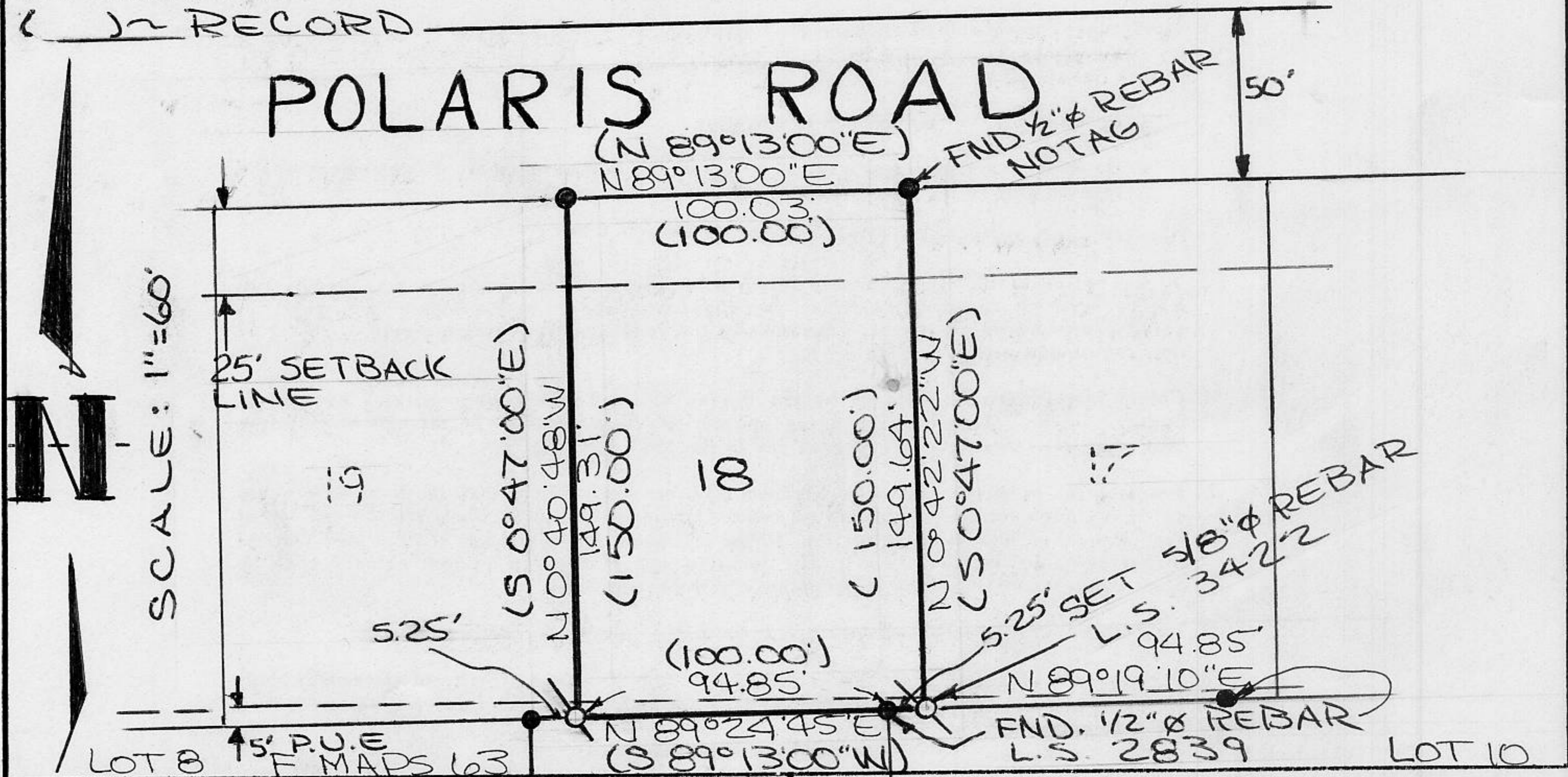
● ~ FOUND 1/2" Ø REBAR, NO TAG, UNLESS OTHERWISE INDICATED

PHYSICAL DESCRIPTION OF MONUMENTS REBUILT OR PERPETUATED _____

Q ~ SET 5/8" Ø REBAR WITH PLASTIC YELLOW CAP TAGGED L.S. 3422

CALIFORNIA COORDINATE SYSTEM ORDER: FIRST SECOND THIRD N/A
 STATIONS USED: NGS (USC & GS) STATE COUNTY OTHER STATION _____ STATION _____
 ZONE _____ ELEVATION _____ NORTHINGS (Y) _____ EASTINGS (X) _____

SKETCH: (Include reference tie or witness points, remarks and topo of area)

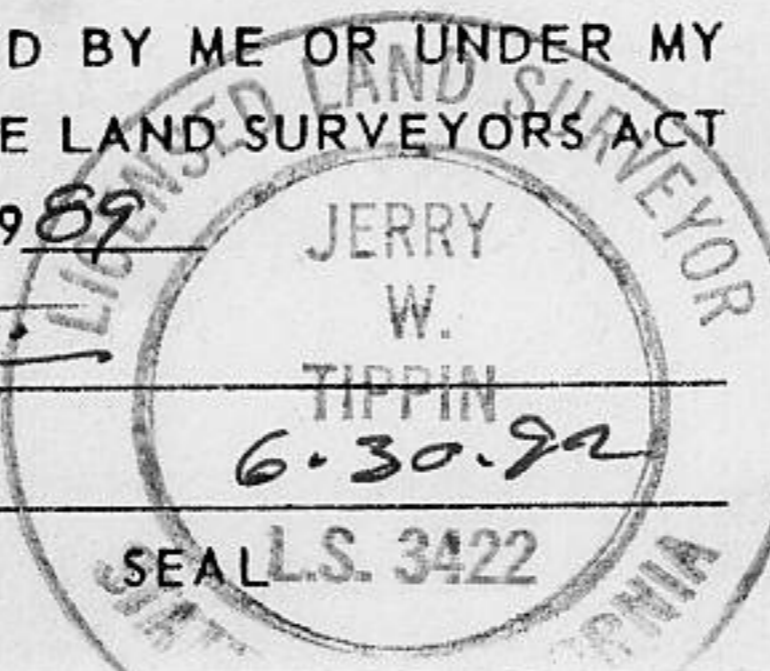


SURVEYOR'S CERTIFICATE

THIS CORNER RECORD WAS PREPARED BY ME OR UNDER MY DIRECTION IN CONFORMANCE WITH THE LAND SURVEYORS ACT ON Nov 6 1989

SIGNED: _____

L.S. or R.C.E. No. L.S. 3422



COUNTY SURVEYOR'S CERTIFICATE

THIS CORNER RECORD WAS RECEIVED 11/9 1989 AND EXAMINED AND FILED 11/9 1989

BY: John Rutgers
 TITLE: DEPUTY COUNTY SURVEYOR

DOCUMENT No. _____
 STATEMENT ON BACK OF SHEET

YES NO

J.N. 150.02

BOOK 2, CORNER RECORDS PAGE 14