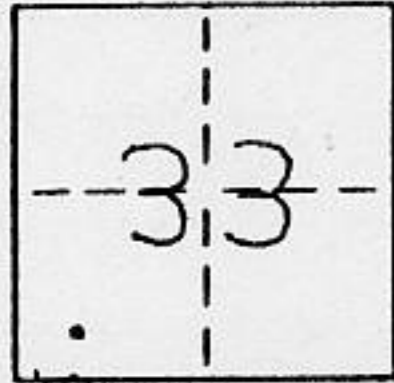


CORNER RECORD

COUNTY OF PLACER T. 16N R. 17E MD MERIDIAN CALIFORNIA

CORNER TYPE: GOV'T. CORNER MEANDER RANCHO CONTROL OTHER
 CORNER IDENTIFICATION - DATE OF VISIT 8-3 1989



LOT 23, DOLLAR POINT No. 1, BK. F MAPS 73

CORNER - LEFT AS FOUND FOUND AND TAGGED REESTABLISHED OBLITERATED CORNER REBUILT

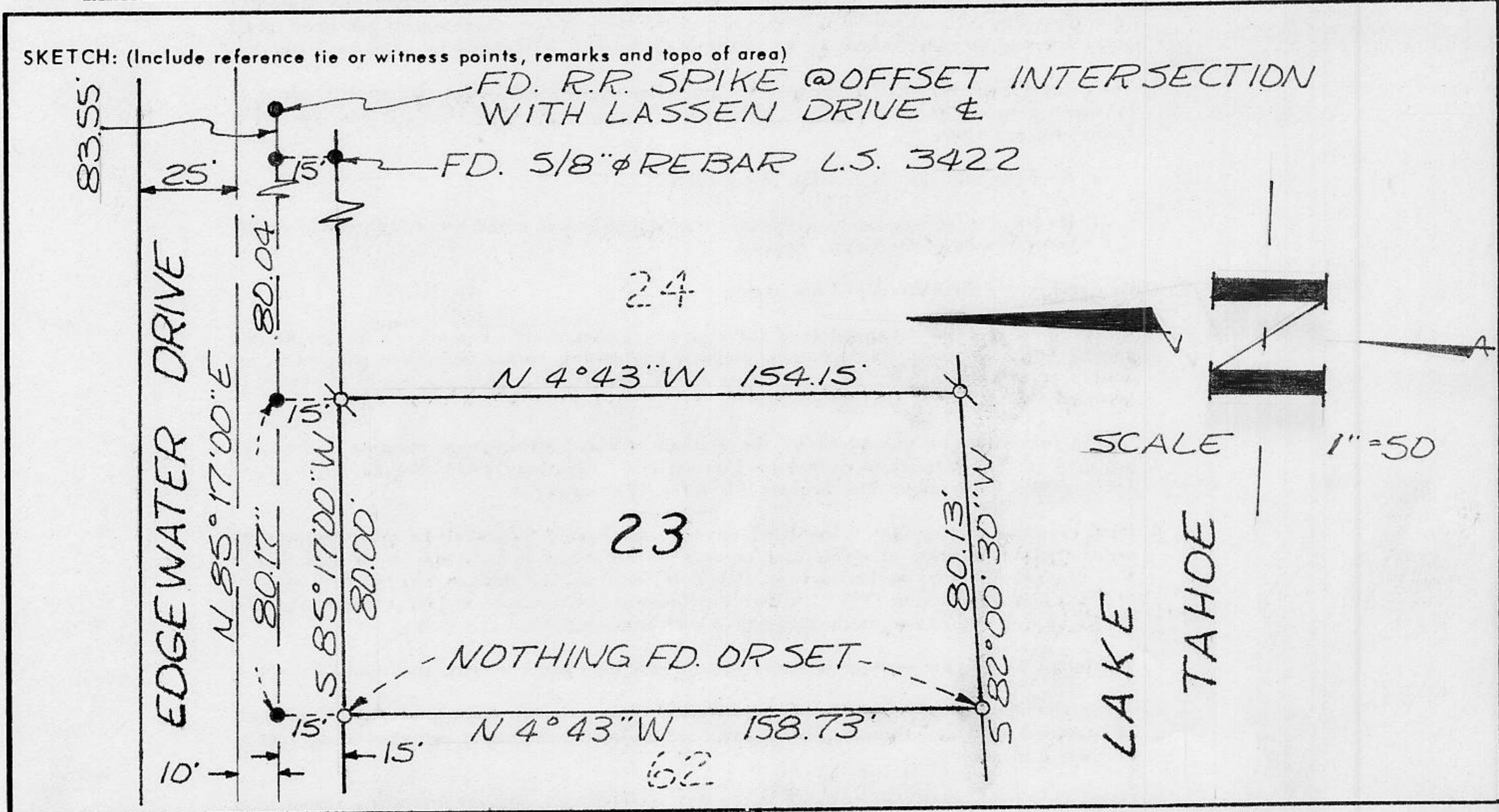
PHYSICAL DESCRIPTION OF CORNER FOUND: EVIDENCE AND METHOD USED TO IDENTIFY OR REESTABLISH _____

• FOUND RAILROAD SPIKE SET IN PAVED ROADWAY, UNLESS OTHERWISE INDICATED

PHYSICAL DESCRIPTION OF MONUMENTS REBUILT OR PERPETUATED _____

SET 5/8" Ø REBAR WITH YELLOW PLASTIC CAP STAMPED L.S. 5886

CALIFORNIA COORDINATE SYSTEM ORDER: FIRST SECOND THIRD N/A
 STATIONS USED: NGS (USC & GS) STATE COUNTY OTHER STATION _____ STATION _____
 ZONE _____ ELEVATION _____ NORTHINGS (Y) _____ EASTINGS (X) _____



BOOK 2, CORNER RECORDS, PAGE 17

SURVEYOR'S CERTIFICATE

THIS CORNER RECORD WAS PREPARED BY ME OR UNDER MY DIRECTION IN CONFORMANCE WITH THE LAND SURVEYORS ACT ON 8-5

SIGNED: _____

L.S. or R.C.E. No.: L.S. 5886



COUNTY SURVEYOR'S CERTIFICATE

THIS CORNER RECORD WAS RECEIVED 11/9 1989 AND EXAMINED AND FILED 11/9 1989

BY: John Ruchers
 TITLE: DEPUTY COUNTY SURVEYOR

DOCUMENT No. _____
 STATEMENT ON BACK OF SHEET

J.N. 407.00 YES NO