

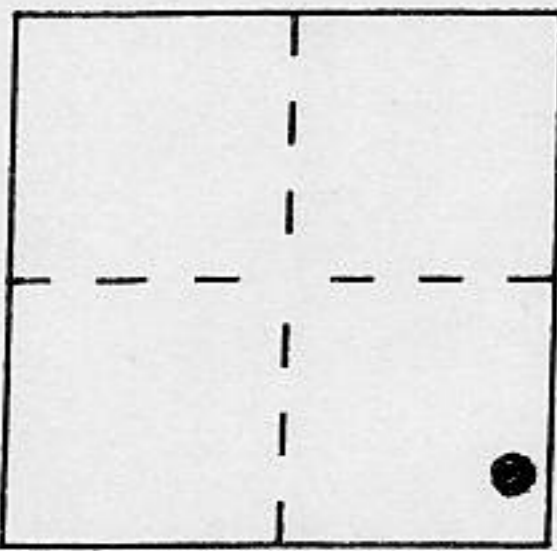
CORNER RECORD

Document Number _____

City of _____

County of PLACER, California

Brief Legal Description LOTS 9 & 10 BLK. "F" LAKE TAHOE PARK SUB. NO. 1
BOOK "D" OF MAPS PAGE 17 P.C.O.R.



SEC. 13
T. 15 N.
R. 16 E.
M. D. M.

CORNER TYPE

Government Corner Control
 Meander Property
 Rancho Other
 Date of Survey 9/8/96

COORDINATES (Optional)

N. _____
 E. _____
 Zone _____ Datum _____
 Elev. _____

Corner — Left as found Found and tagged Established Reestablished Rebuilt

Identification and type of corner found: Evidence used to identify or procedure used to establish or reestablish the corner:

- = FOUND 2" IRON PIPE, BELIEVE TO BE ORIGINAL PER "D"/MAPS/17
- = FOUND 5/8" REBAR W/PLASTIC CAP STAMPED RCF 20257
- = FOUND 1/2" REBAR, NO TAG

A description of the physical condition of the monument as found and as set or reset:

- = SET 3/4" IRON PIPE W/PLASTIC PLUG, STAMPED L.S. 5549

JN 96109

SURVEYOR'S STATEMENT

This Corner Record was prepared by me or under my direction in conformance with the Land Surveyors' Act on AUG. 9 1996.

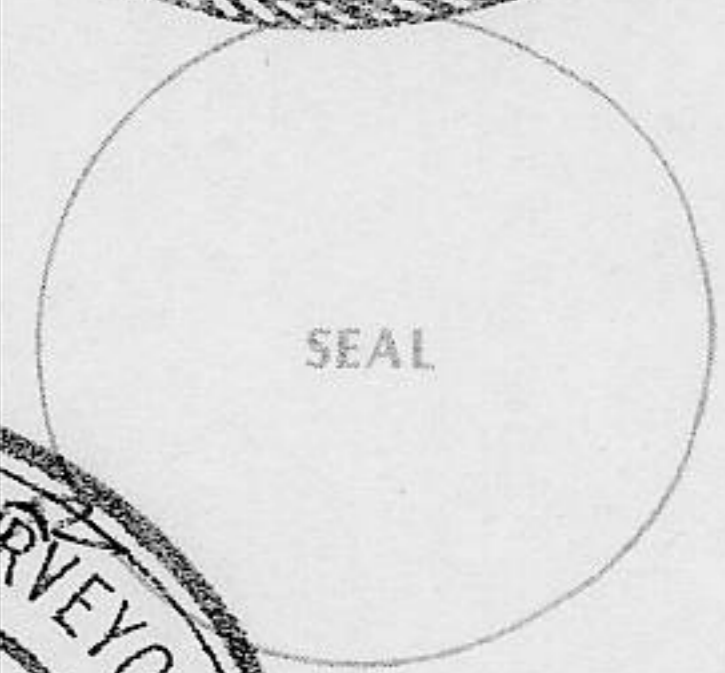
Signed Charles R. Sage Jr. L.S. or R.C.E. Number L.S. 5549
 LIC. EXPIRES 6-30-97



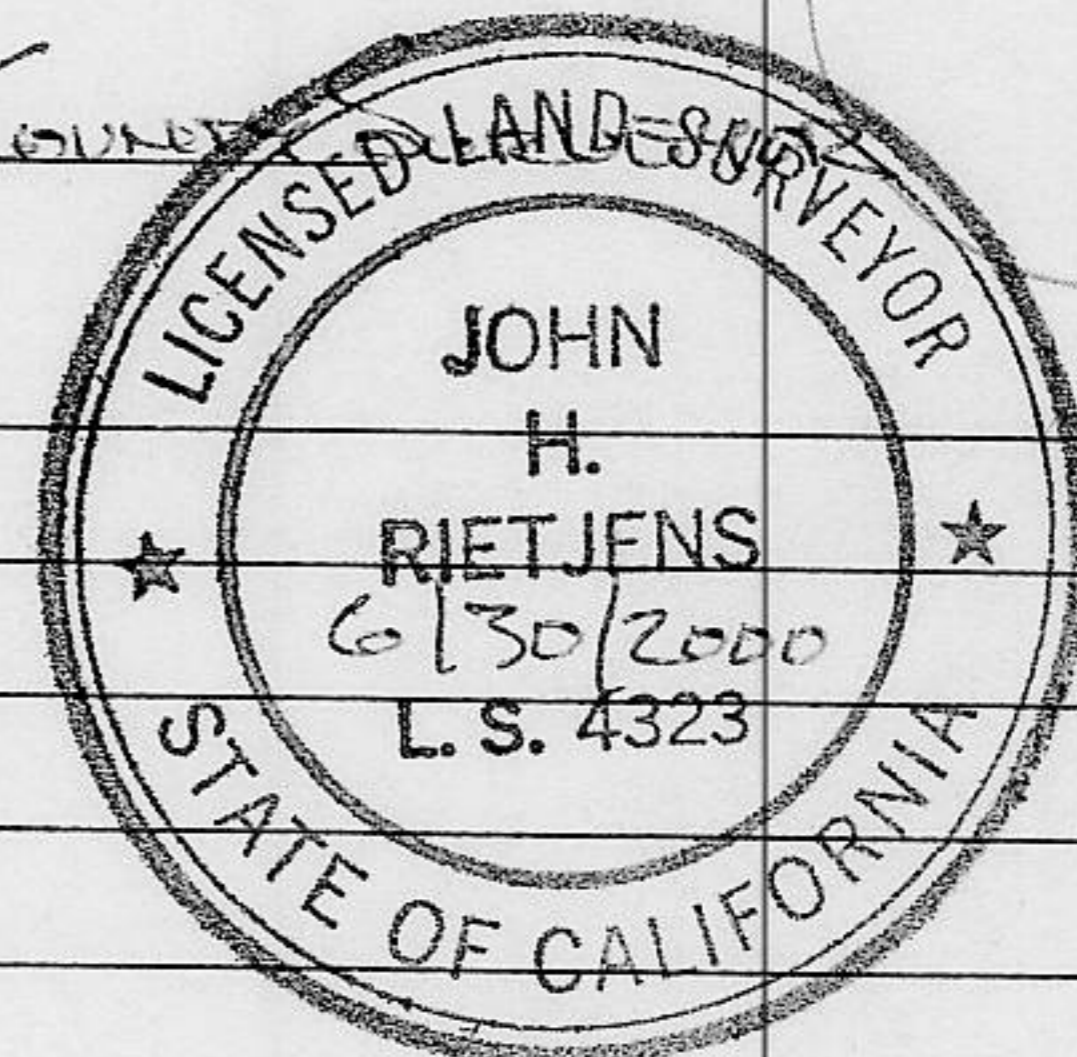
COUNTY SURVEYOR'S STATEMENT

This Corner Record was received NOVEMBER 7 1996 and examined and filed NOVEMBER 25 1996.

Signed John Rietsjens Title DEPUTY COUNTY CLERK

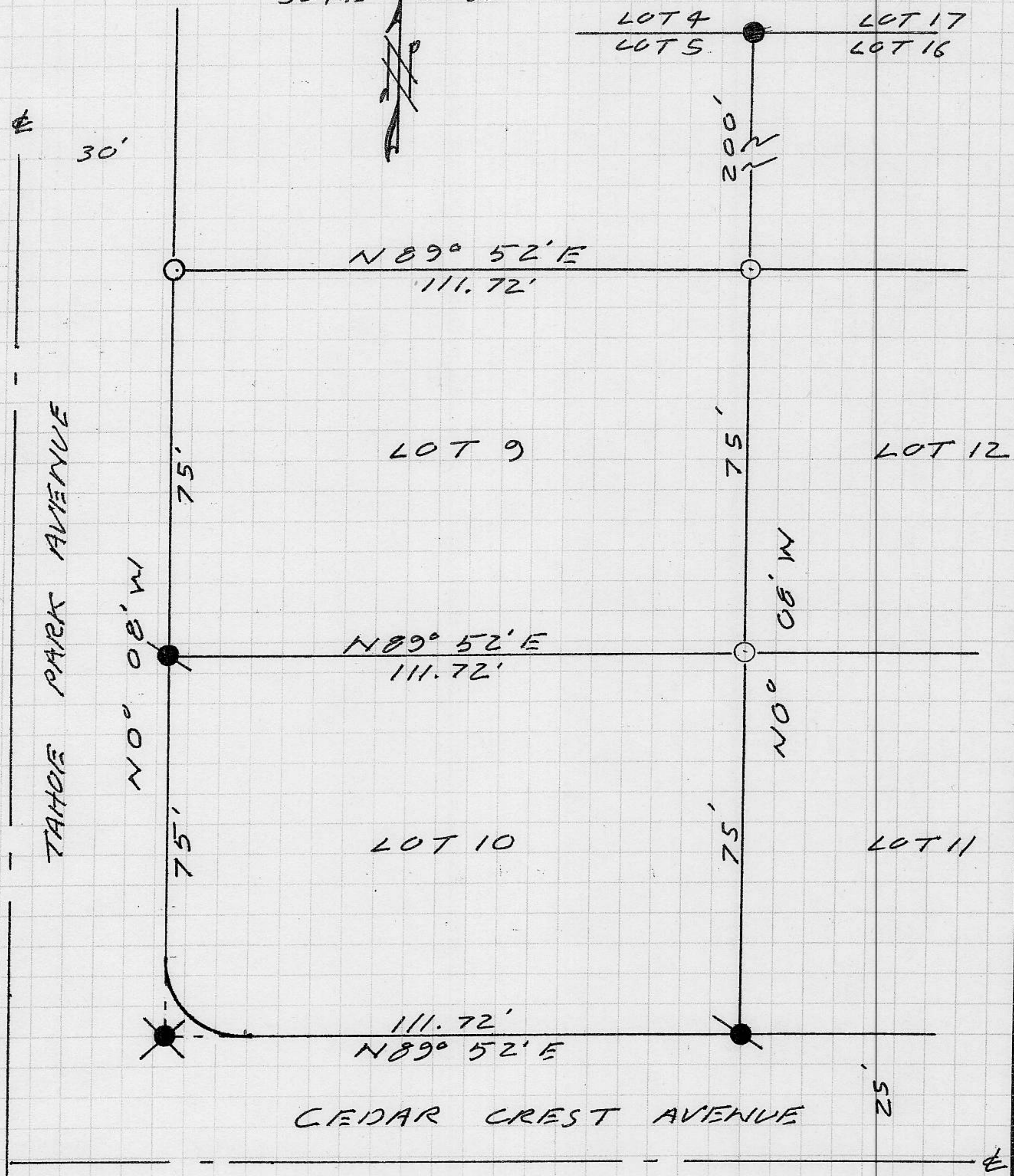


County Surveyor's Comment _____



BOOK 5 CORNER RECORDS PAGE 56

SCALE 1"=30'



NOTE: BEARINGS & DISTANCES SHOWN ARE RECORD PER "D/MAPS/17. NO MATERIAL DISCREPANCIES WITH RECORD INFORMATION WERE FOUND.